

Excellent Integrated System Limited

Stocking Distributor

Click to view price, real time Inventory, Delivery & Lifecycle Information:

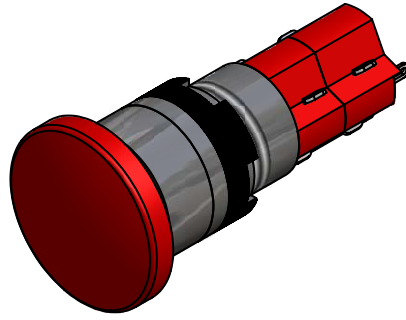
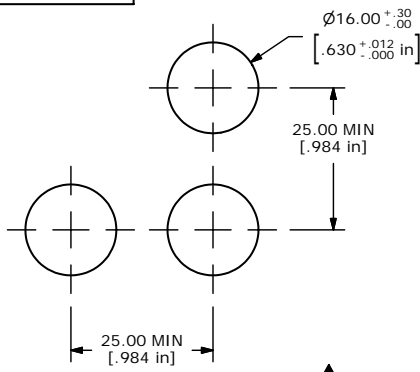
[E-Switch](#)
[D16EER2JREDRED](#)

For any questions, you can email us directly:

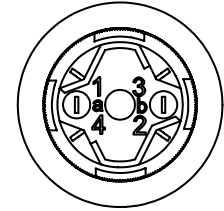
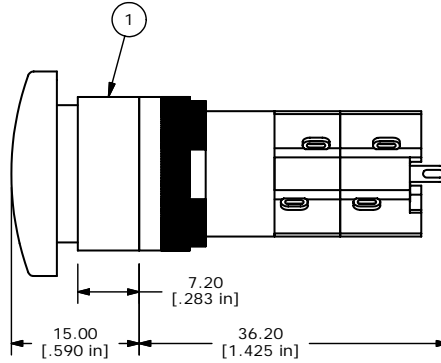
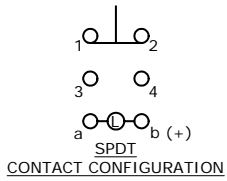
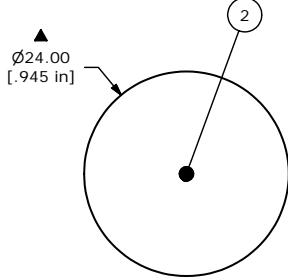
sales@integrated-circuit.com

SHEET 1 OF 1

PARTS LIST			
ITEM	QTY	PART NUMBER	DESCRIPTION
1	1	F040006	D16EER11
2	1	F050420	50-004-20 12VDC RED LED
3	1	F051212	MUSHROOM CAP RED



PANEL MOUNTING



- NOTE:
1. ALL DIMENSIONS IN MM [INCH]
 2. GENERAL TOLERANCE: X.X = ±0.4
X.XX = ±0.25
 3. TERMINAL NUMBERS FOR REF ONLY
 4. MECHANICAL LIFE: 50,000 OPERATIONS
 5. INSULATION RESISTANCE: 1,000 MILLI-OHM MIN.
 6. OPERATING TEMP.: -25°C to 55°C
 - ▲ 7. LED VOLTAGE: 12VDC RED
 - ▲ 8. ▲ DENOTES CRITICAL PARAMETER.



A	15704	RELEASED FOR PRODUCTION	1/26/06	PH
REV	PCR NO	DESCRIPTION	DATE	BY

TITLE D16EER2JREDRED				
SCALE	DATE	DR	DWG	REV
2:1	1/26/2006	PH	XF0667P	A

THE INFORMATION CONTAINED IN THIS DOCUMENT IS PROPRIETARY TO E-SWITCH AND IS NOT TO BE COPIED OR TRANSFERRED