

Excellent Integrated System Limited

Stocking Distributor

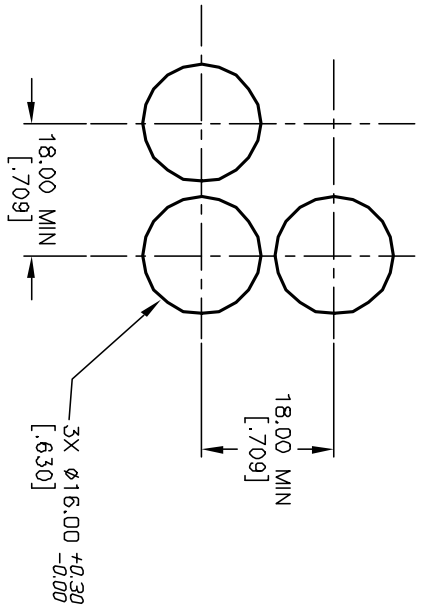
Click to view price, real time Inventory, Delivery & Lifecycle Information:

[E-Switch](#)
[D16EES12KYELYEL](#)

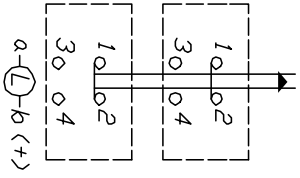
For any questions, you can email us directly:
sales@integrated-circuit.com

PARTS LIST

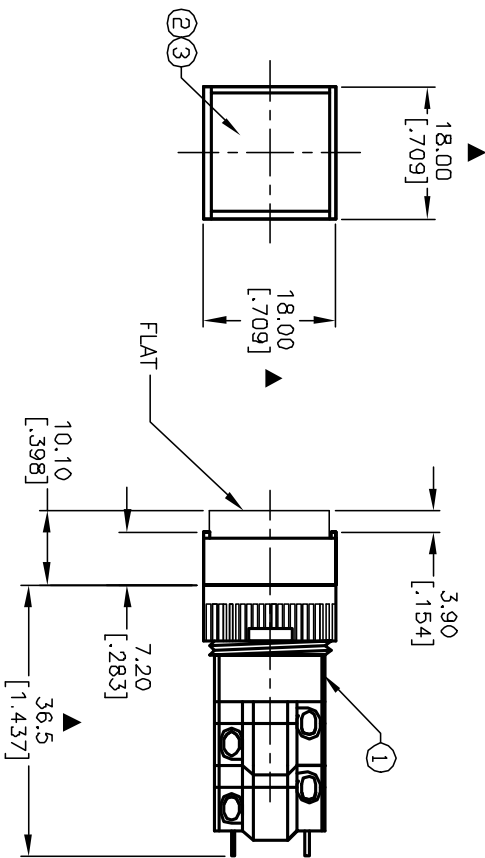
ITEM	QTY.	PART NO.	PART DESCRIPTION
1	1	F040020	D16 EE S12
2	1	F050316	50-003-16 (YELLOW TRANSPARENT)
3	1	F050424	50-004-24 (YELLOW LED)



RECOMMENDED
PANEL MOUNTING



CONTACT CONFIGURATION



NOTES:

1. ALL DIMENSIONS IN MM [INCH]
2. GENERAL TOLERANCE: X.X=±0.4 X.XX=±0.25
3. TERM. NOS. FOR REFERENCE ONLY.
4. RATINGS: 5A@250V AC/ 8A@125V AC
5. TRAVEL: 3.0MM
6. MECHANICAL LIFETIME: > 2 MILLION OPERATIONS
7. LAMP VOLTAGE: 24V DC
8. ▲ DENOTES CRITICAL PARAMETER.

REV.	ECN NO.	DESCRIPTION	DATE	CHKD
A	13206	RELEASED FOR PRODUCTION	6/13/03	AR

TITLE	SCALE	DATE	DR	DWG	REV
D16EES12KYELYEL	1.5:1	6/13/03	AR	XF0555SP	A

E-SWITCH®

THE INFORMATION CONTAINED IN THIS DOCUMENT IS PROPRIETARY TO E-SWITCH AND IS NOT TO BE COPIED OR TRANSMITTED