

Excellent Integrated System Limited

Stocking Distributor

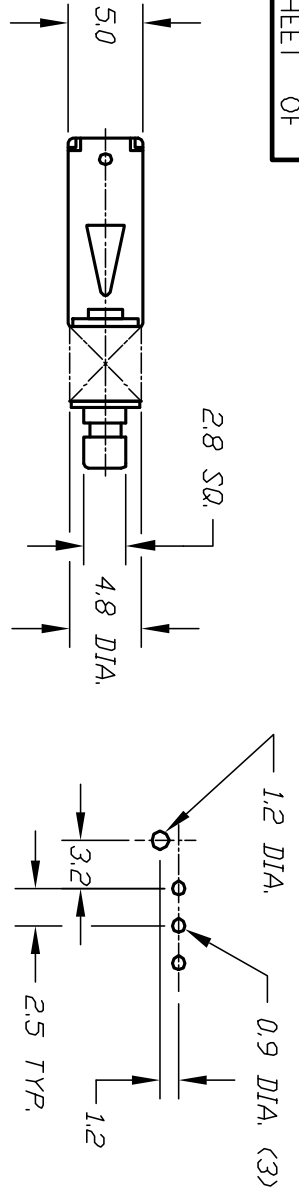
Click to view price, real time Inventory, Delivery & Lifecycle Information:

[E-Switch](#)
[LC1257EENP](#)

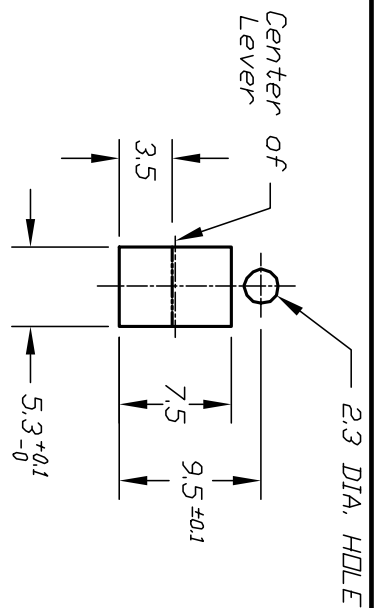
For any questions, you can email us directly:

sales@integrated-circuit.com

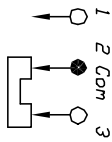
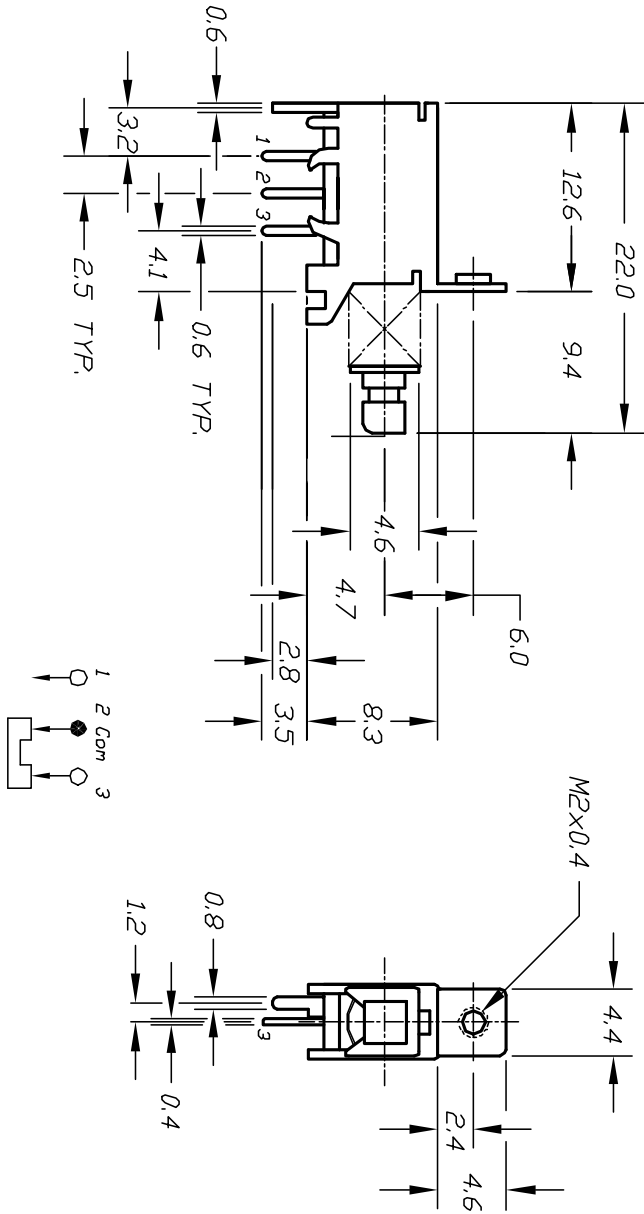
SHEET OF



RECOMMEND P.C.B. HOLES

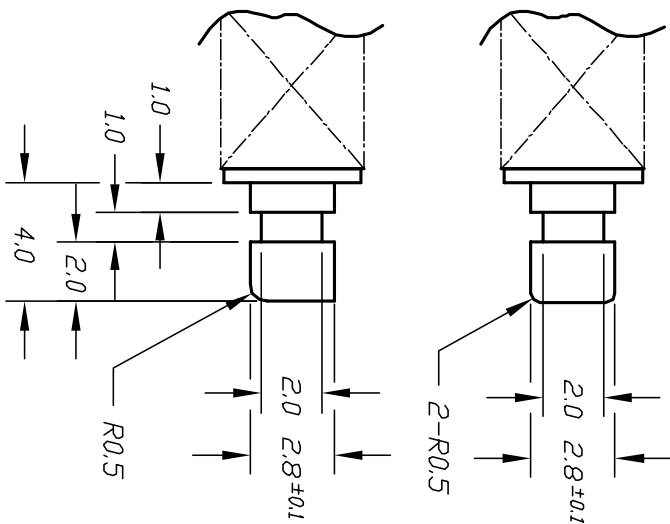


PANEL LAYOUT



CIRCUIT: SPDT

CONTACT CONFIGURATION



ACTUATOR DETAIL SCALE 4:1

- NOTES:
1. ALL DIMENSIONS IN MM
 2. GENERAL TOLERANCE: X.X=±0.4
X.XX=±0.25
 3. RATING: 30V DC, 0.3A
 4. OPERATING FORCE: 230±100gf.
 5. TRAVEL: FULL 3.5mm; Lock 2.5mm
 6. TIMING: NON-SHORTING

REV.	ECN No.	DESCRIPTION	DATE	CHKD
A	12942	RELEASED FOR PRODUCTION	3/21/03	AR

TITLE	SCALE	DATE	DR	DWG	REV
LC1257EENP (NON-SHORTING)	2:1	3/21/03	AR	P070112	A

E-SWITCH®

THE INFORMATION CONTAINED IN THIS DOCUMENT IS PROPRIETARY TO E-SWITCH AND ITS NOT TO BE COPIED OR TRANSMITTED