

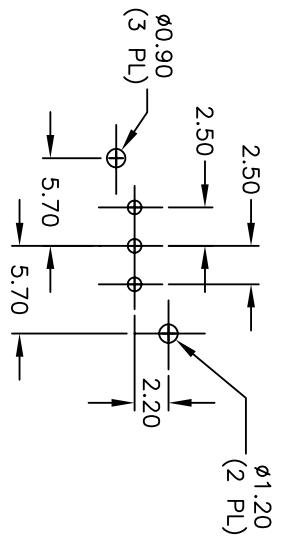
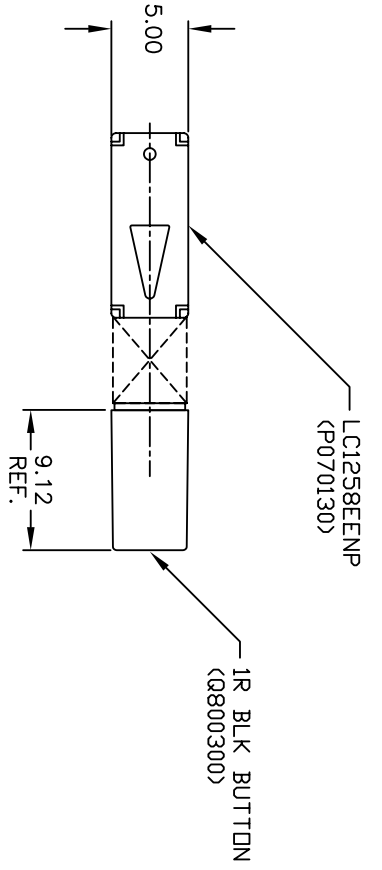
## Excellent Integrated System Limited

Stocking Distributor

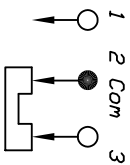
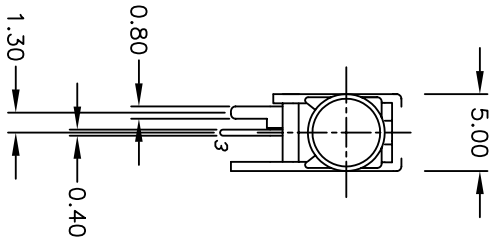
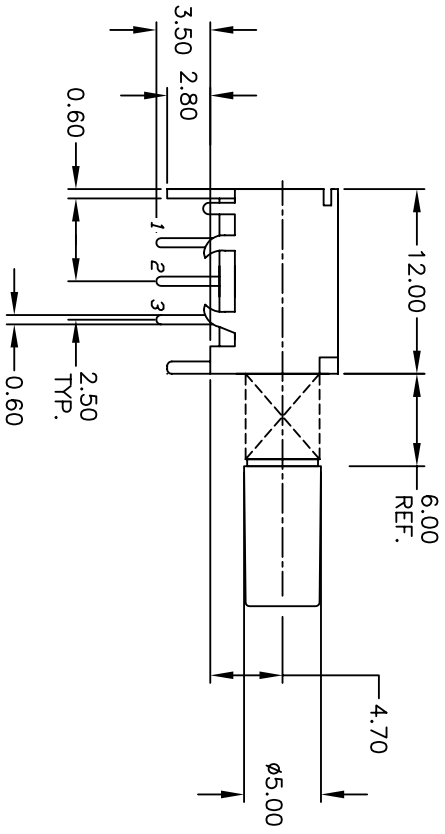
Click to view price, real time Inventory, Delivery & Lifecycle Information:

[E-Switch](#)  
[LC1258EENP1RBLK](#)

For any questions, you can email us directly:  
[sales@integrated-circuit.com](mailto:sales@integrated-circuit.com)



RECOMMENDED P.C.B. LAYOUT  
SCALE 2:1



SPDT CIRCUIT DIAGRAM  
NON-SHORTING

NOTES

1. ALL DIMENSIONS IN MM
2. GENERAL TOLERANCE: X.XX=±0.4
3. TERM NOS FOR REF ONLY.
4. RATING: 30VDC, 0.3A
5. OPERATING FORCE: 230±100GF
6. TRAVEL: FULL 3.5MM; LOCK 2.5MM

REV.	ECN No.	DESCRIPTION	DATE	CHKD
B	15633	NEW TOOLING FOR CAP	12/22/05	PH
A	14737	RELEASED FOR PRODUCTION	3/10/05	AR

TITLE		SCALE		DATE		DR		DWG		REV	
LC1258EENP1RBLK		3:1		3/10/05		AR		XP0274A		B	



THE INFORMATION CONTAINED IN THIS DOCUMENT IS PROPRIETARY TO E-SWITCH AND IS NOT TO BE COPIED OR TRANSFERRED