

Excellent Integrated System Limited

Stocking Distributor

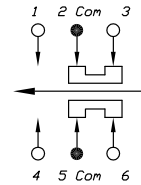
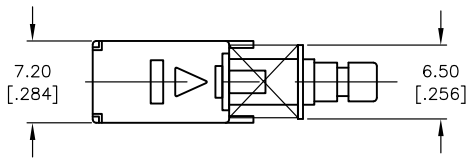
Click to view price, real time Inventory, Delivery & Lifecycle Information:

[E-Switch](#)
[LC2256EENP](#)

For any questions, you can email us directly:

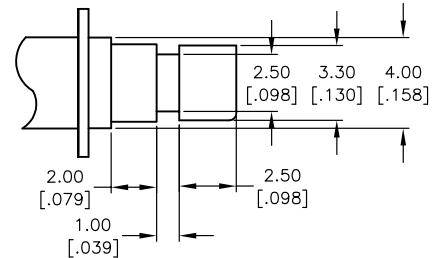
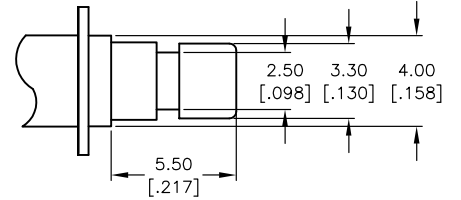
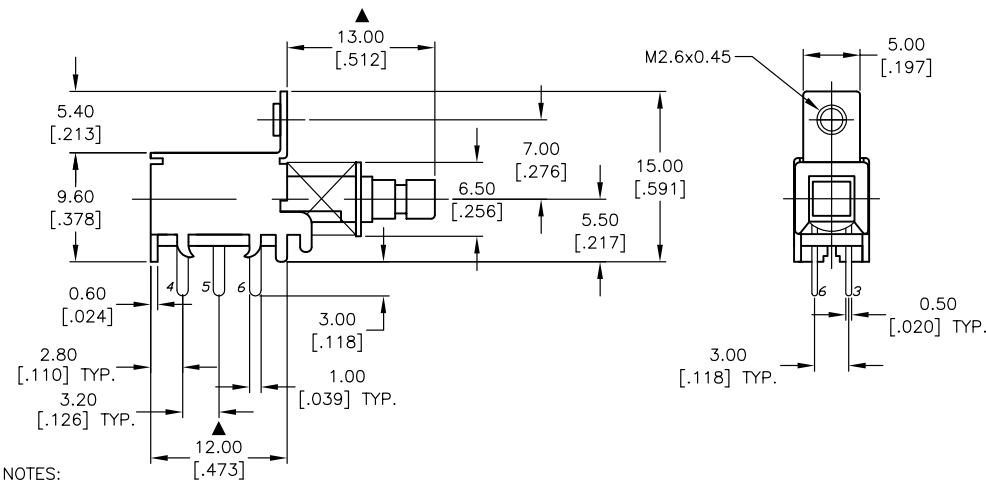
sales@integrated-circuit.com

SHEET 1 OF 1



CIRCUIT: DPDT

CONTACT CONFIGURATION



(ACTUATOR DETAIL) SCALE 4:1

NOTES:

1. ALL DIMENSIONS IN MM
2. GENERAL TOLERANCE: X.X=±0.4
X.XX=±0.25
3. TERM. NOS. FOR REFERENCE ONLY.
- ▲ 4. RATING: DC 30V, 0.3A
5. OPERATING FORCE: 300±150GF
6. TRAVEL: FULL 3.5MM; LOCK 2.5MM
7. ▲ DENOTES CRITICAL PARAMETER.

E-SWITCH®

A	13526	RELEASED FOR PRODUCTION	10/13/03	AR
REV.	ECN No.	DESCRIPTION	DATE	CHKD

THE INFORMATION CONTAINED IN THIS DOCUMENT IS PROPRIETARY TO E-SWITCH AND IS NOT TO BE COPIED OR TRANSFERRED

TITLE					LC2256EENP				
SCALE	2:1	DATE	10/13/03	DR	AR	DWG	P070189	REV	A