

Excellent Integrated System Limited

Stocking Distributor

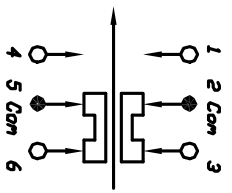
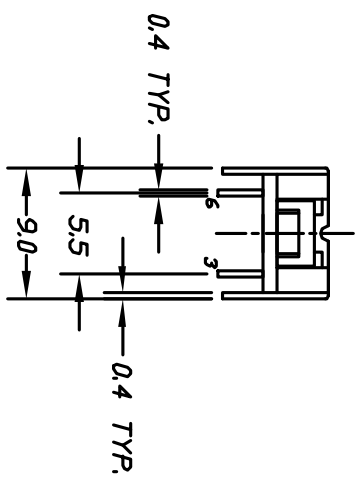
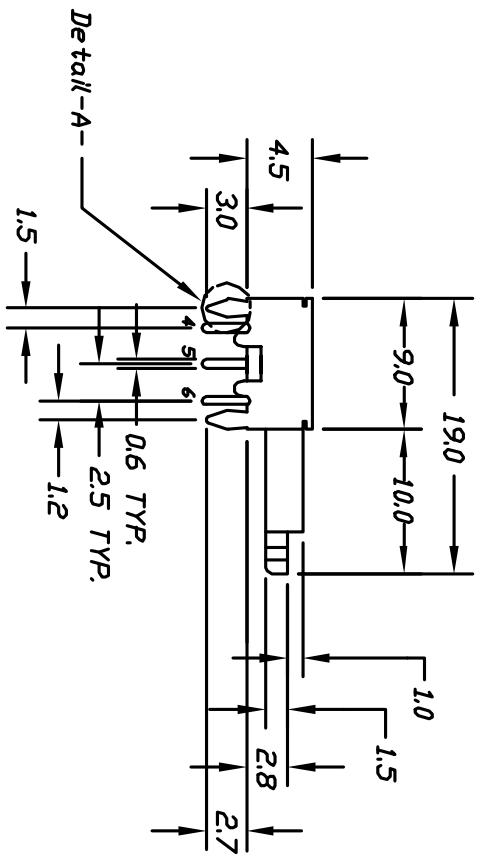
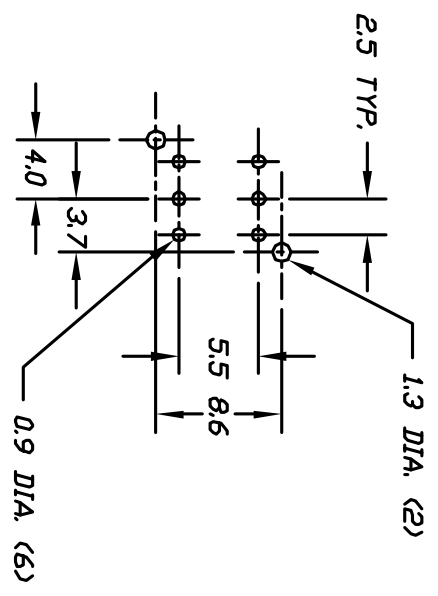
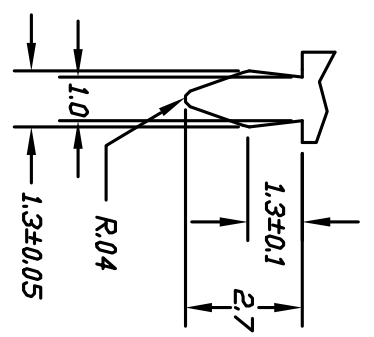
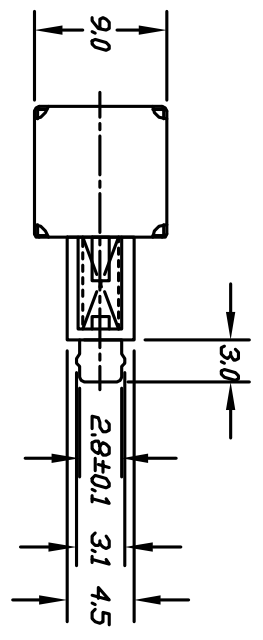
Click to view price, real time Inventory, Delivery & Lifecycle Information:

[E-Switch](#)
[LC2262OANP](#)

For any questions, you can email us directly:

sales@integrated-circuit.com

SHEET 0F



NOTES:

1. ALL DIMENSIONS IN MM
2. TERM. NOS. FOR REF ONLY
3. RATING: DC 30V, 0.3A
4. TIMING: NON SHORTING
5. TRAVEL: FULL: 2.5mm, LOCK: 1.5mm
6. OPERATING FORCE: 200±100gf

CIRCUIT: DPDT
CONTACT CONFIGURATION

E-SWITCH®

LC 2262DA N P

REV.	DESCRIPTION	DATE	CHKD
A	RELEASED FOR PRODUCTION		

TOLERANCES	
0.0	±0.4
0.00	±0.25

SCALE	DATE	DR	DWG	REV
2:1	10/17/97	MM	P070241	A

THE INFORMATION CONTAINED IN THIS DOCUMENT IS PROPRIETARY TO E-SWITCH AND IS NOT TO BE COPIED OR TRANSMITTED