

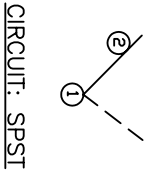
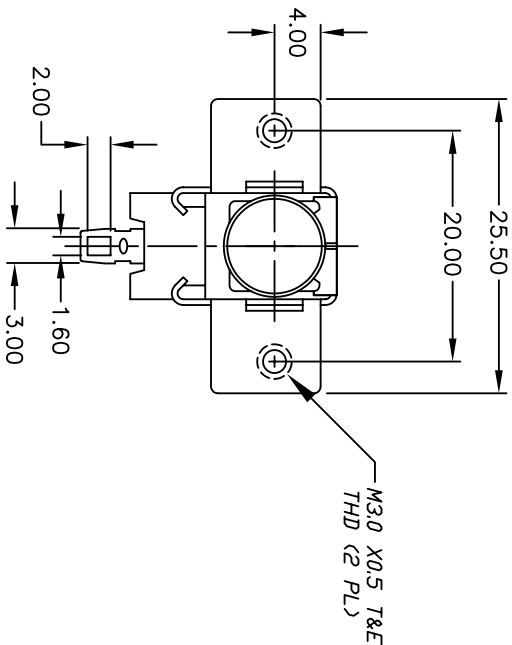
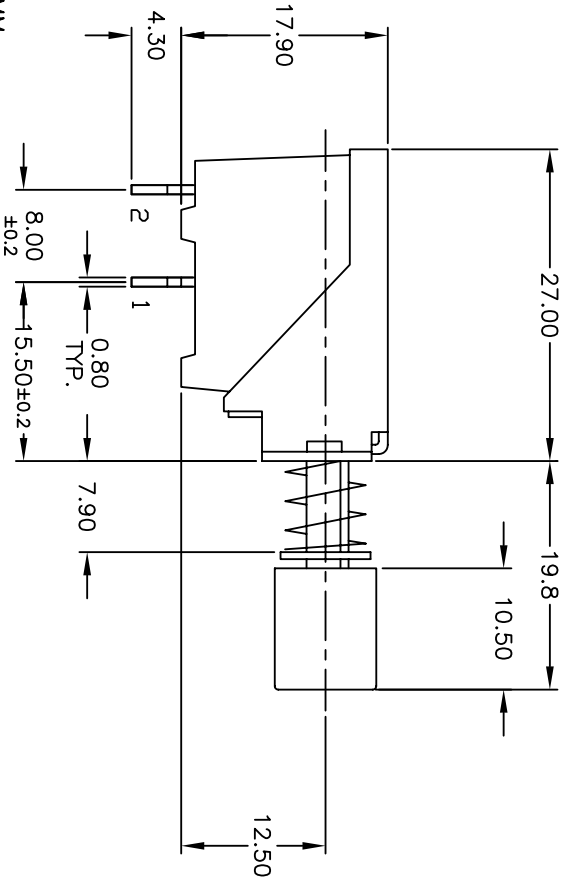
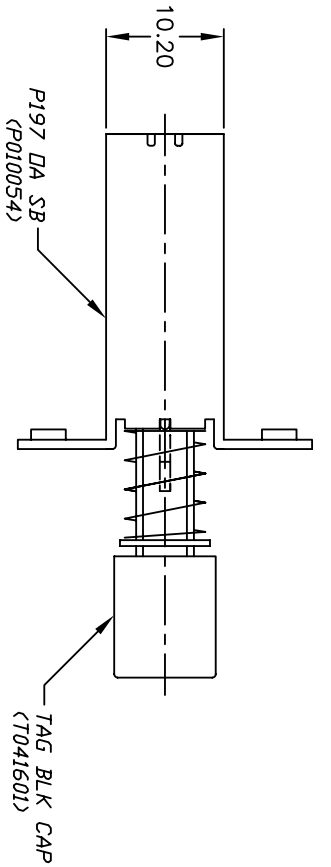
Excellent Integrated System Limited

Stocking Distributor

Click to view price, real time Inventory, Delivery & Lifecycle Information:

[E-Switch](#)
[P197OASBTAGBLK](#)

For any questions, you can email us directly:
sales@integrated-circuit.com



NOTES:

1. ALL DIMENSIONS IN MM
2. GENERAL TOLERANCE: X.X=±0.4
X.XX=±0.25
3. TERMINAL NO.S FOR REF ONLY.
4. RATING: AC 250V 5A/80A, TV-5
5. CONTACT RESISTANCE: 100m Ohms MAX. (AT DC 5V@1A)
6. DIELECTRIC STRENGTH: AC 1000V
7. OPERATING FORCE: 350±100gf
8. TRAVEL: FULL STROKE: 3.5+0.5/-0mm
9. 2002/95/EC (ROHS) COMPLIANT

REV.	ECN No.	DESCRIPTION	DATE	CHKD
C	16839	FIXED 9.8 DIM TD 19.8	1/9/07	TN
B	16838	FIXED CAP DESCRIPTION	1/8/07	TN
A	11228	RELEASED FOR PRODUCTION	2/07/01	CJB

THE INFORMATION CONTAINED IN THIS DOCUMENT IS PROPRIETARY TO E-SWITCH AND IS NOT TO BE COPIED OR TRANSFERRED		SCALE	DATE	DR	DWG	REV
TITLE		1.5:1	1/9/07	TN	XP0211A	C
P197DASB (TAG/BLK)						

E-SWITCH®