

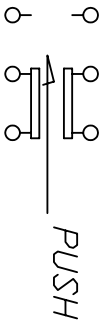
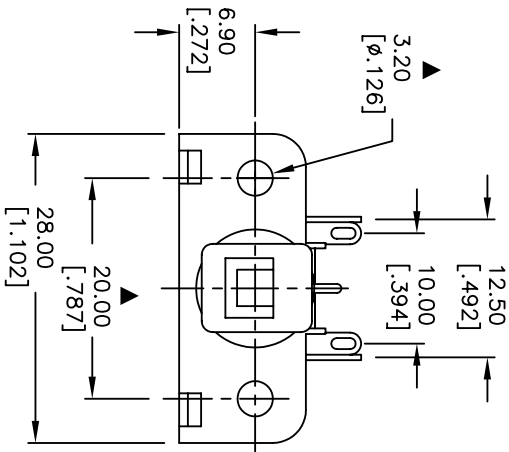
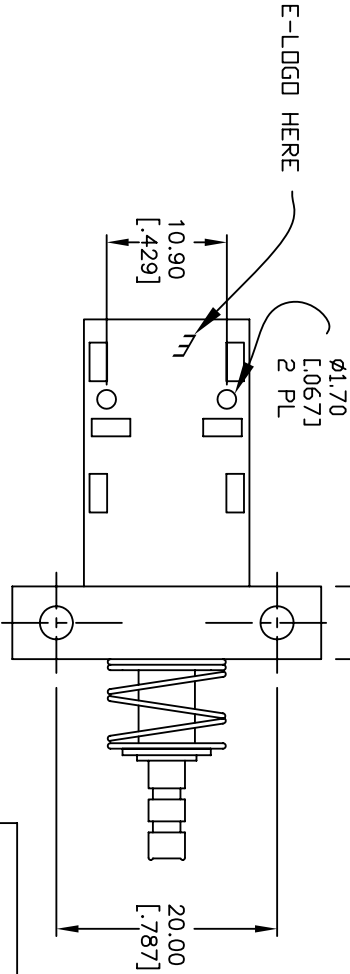
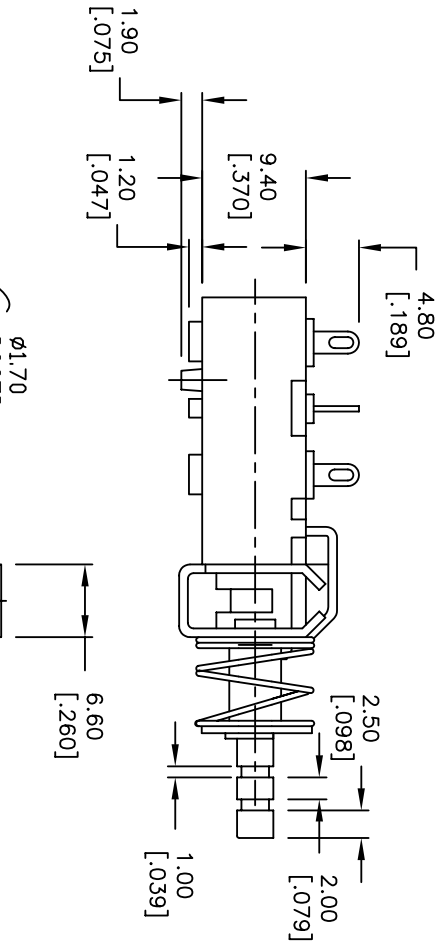
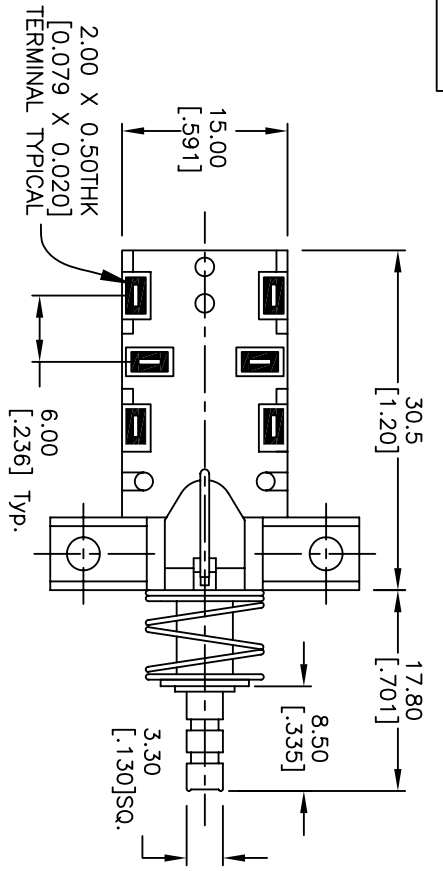
Excellent Integrated System Limited

Stocking Distributor

Click to view price, real time Inventory, Delivery & Lifecycle Information:

[E-Switch](#)
[P227EE2A20B](#)

For any questions, you can email us directly:
sales@integrated-circuit.com



- NOTES:
1. ALL DIMENSIONS IN MM [INCH]
 2. GENERAL TOLERANCE: X.X=±0.4
X.XX=±0.25
 3. TERM. NOS. FOR REFERENCE ONLY.
 4. RATING: 7A@125V, 4A@250 VUL,CUL, & VDE APPROVED
 5. CONTACT MATERIAL:
Terminals, Copper Alloy W/Silver plate.
Contacts, Copper Alloy W/Tin Oxide
 6. CONTACT RESISTANCE: 100mili-ohms TYP. MAX Initial
 7. DIELECTRIC STRENGTH: 1500V for 1min
3000V between poles
 8. ELECTRICAL LIFE: 6,000 Cycles
 9. OPERATING FORCE: 550±150gf TYP.
 10. TRAVEL: FULL:5.5, LOCK:4.0
 11. 2002/95/EC (ROHS) COMPLIANT
 12. ▲ DENOTES MAJOR DIMENSION

B	16913	FIXED DESCRIPTION	1/24/07	TN
A	13192	RELEASED FOR PRODUCTION	6/6/03	AR
REV.	ECN No.	DESCRIPTION	DATE	CHKD

THE INFORMATION CONTAINED IN THIS DOCUMENT IS PROPRIETARY TO E-SWITCH AND IS NOT TO BE COPIED OR TRANSFERRED

TITLE		SCALE		DATE	DR	DWG	REV
P227EE2A20B		1.5:1		1/24/07	TN	P030110	B
E-SWITCH®							