

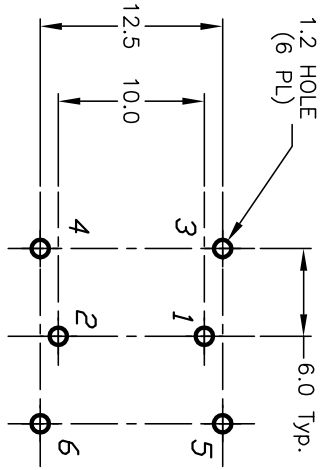
Excellent Integrated System Limited

Stocking Distributor

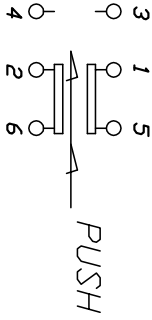
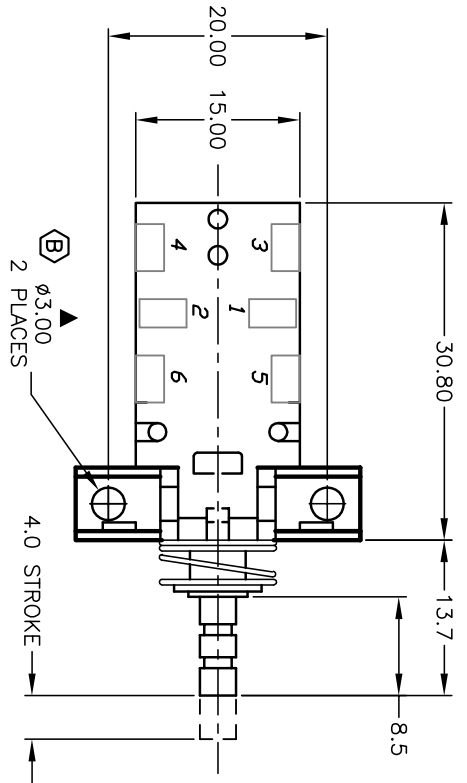
Click to view price, real time Inventory, Delivery & Lifecycle Information:

[E-Switch](#)
[P227OA2B20C](#)

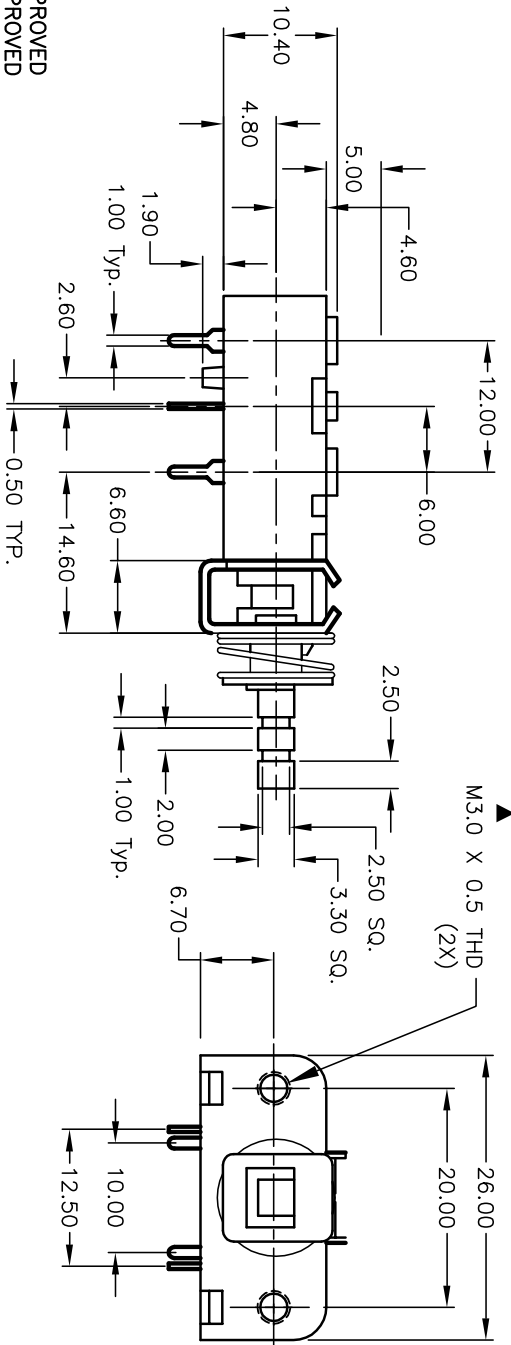
For any questions, you can email us directly:
sales@integrated-circuit.com



RECOMMEND P.C.B. LAYOUT
SCALE 2:1



CIRCUIT: DPDT
CONTACT CONFIGURATION



NOTES:

1. ALL DIMENSIONS IN MM
2. GENERAL TOLERANCE: X.X=±0.4
X.XX=±0.25
3. TERM. NOS. FOR REF. ONLY
4. RATING: AC 250V 4A, UL,CUL,VDE APPROVED
5. CONTACT MATERIAL: COPPER ALLOY WITH SILVER PLATE.
6. CONTACT RESISTANCE: 20m ohm max. at 5V DC 1A.
7. DIELECTRIC STRENGTH: AC 1500V RMS
8. LIFE EXPECTANCY: Electrical: 6,000 cycle
9. OPERATING FORCE: 550±150gf
10. TRAVEL: Full: 5.5mm, Lock: 4.0mm
11. TERMINALS TO BE EPOXY

B	13355	3.00 HOLE WAS TAPPED	8/8/03	AR
A	12411	REVISED PART DESCRIPTION	9/12/02	CB
REV.	ECN No.	DESCRIPTION	DATE	CHKD

TITLE		P227 DA 2B 20C (Momentary)		DR	CB	DWG	P030124	REV	B
SCALE	1.5:1	DATE	10/19/01						

E-SWITCH®

THE INFORMATION CONTAINED IN THIS DOCUMENT IS PROPRIETARY TO E-SWITCH AND IS NOT TO BE COPIED OR TRANSMITTED