

Excellent Integrated System Limited

Stocking Distributor

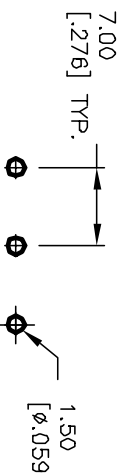
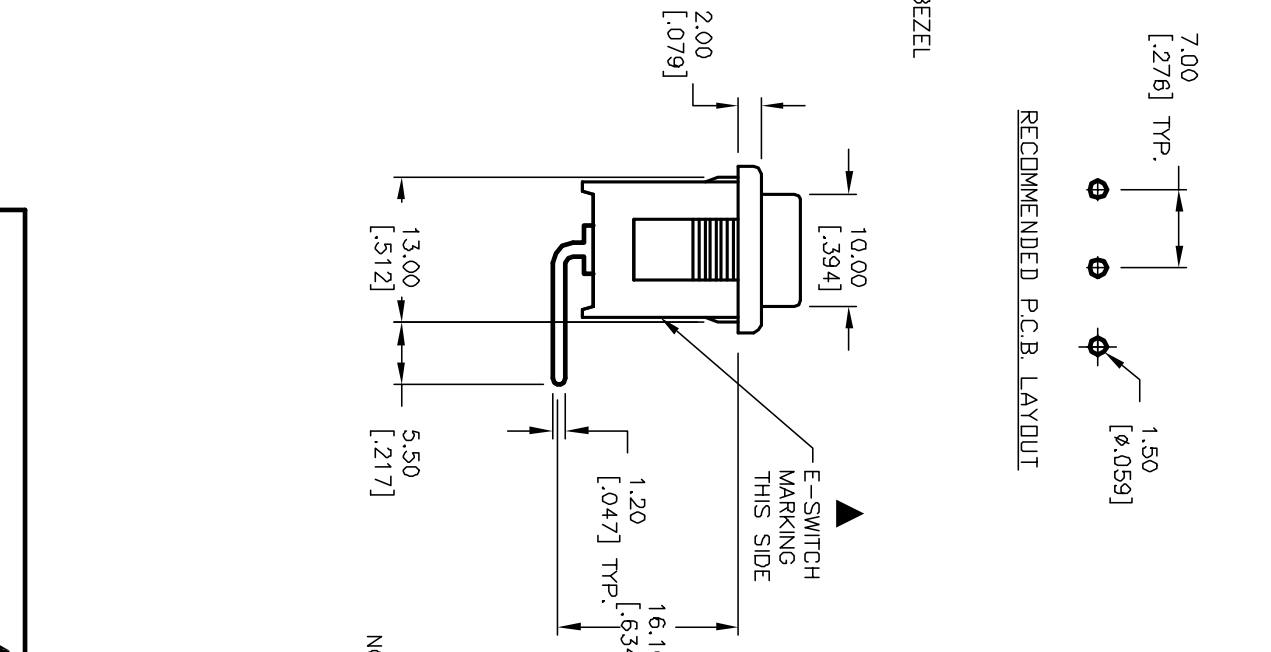
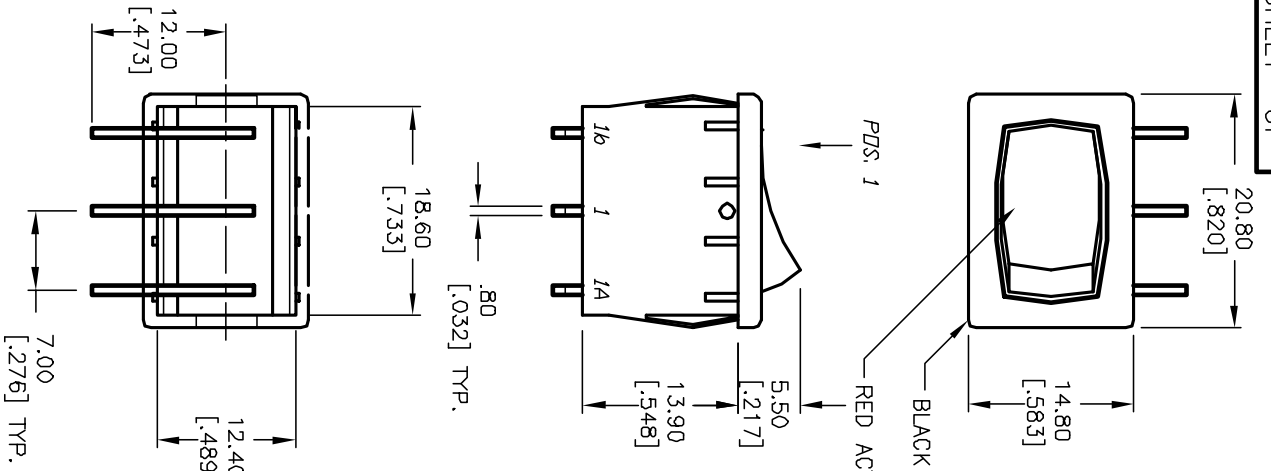
Click to view price, real time Inventory, Delivery & Lifecycle Information:

[E-Switch](#)
[R1966CBLKREder](#)

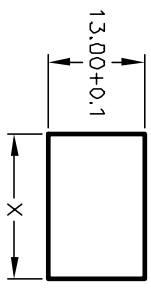
For any questions, you can email us directly:

sales@integrated-circuit.com

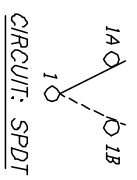
SHEET OF



PANEL THICKNESS	X dimension
0.75-1.25 [0.030-0.049]	19.2-01 [0.756]
1.25-2.0 [0.049-0.079]	19.4-01 [0.764]
2.0-3.0 [0.079-0.118]	19.8-01 [0.780]



SWITCH FUNCTION	
POS. 1	POS. 2
DN	NONE
1-1a	DPEN
	1-1b



NOTES:

1. ALL DIMENSIONS IN MM [INCH]
2. GENERAL TOLERANCE: X.X=±0.4 X:XX=±0.25
3. TERMINAL NOS. FOR REF ONLY.
4. RATING: 15A @ 125VAC OR 6A @ 250VAC
5. MATERIALS: TERMINALS: Silver Plated Copper Alloy CONTACTS: Coin Silver, Silver Plated
6. ELECTRIC LIFE: 10,000 cycles
7. CONTACT RESISTANCE: <20 Mega-OHMS
8. INSULATION RESISTANCE: >1000 Mega-OHMS
9. DIELECTRIC STRENGTH: >1500 V 1 minute >3000 V between poles

E-SWITCH®

REV.	ECN No.	DESCRIPTION	DATE	CHKD
A	12125	RELEASED FOR PRODUCTION	5/7/02	CB

TITLE	SCALE	DATE	DR	DWG	REV
R1966C BLK RED ER	1.5:1	5/7/02	CB	M302212	A

THE INFORMATION CONTAINED IN THIS DOCUMENT IS PROPRIETARY TO E-SWITCH AND IS NOT TO BE COPIED OR TRANSMITTED