

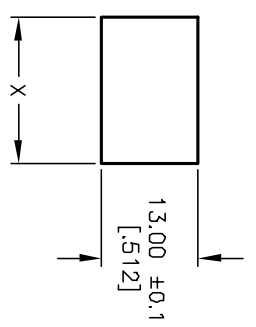
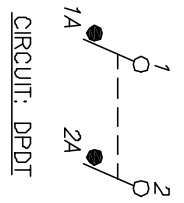
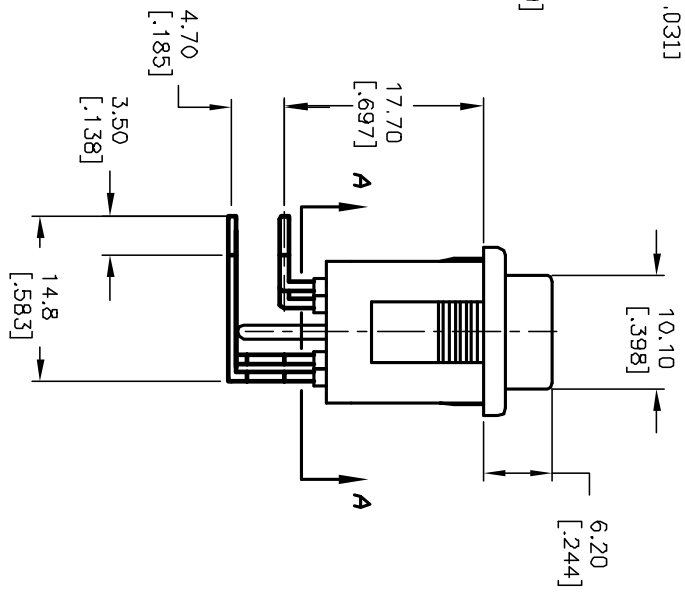
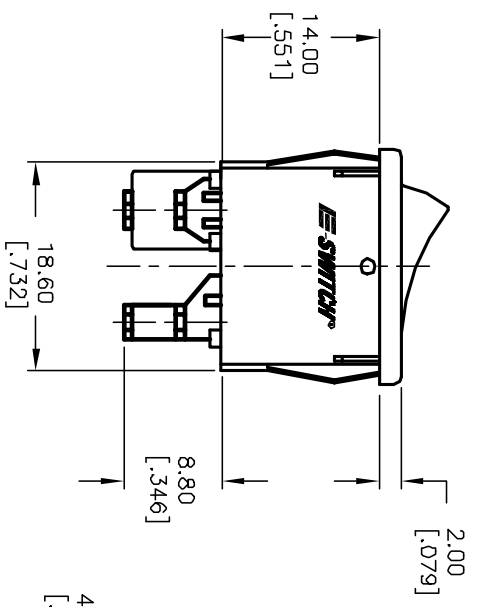
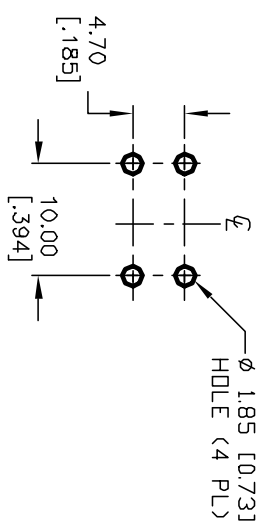
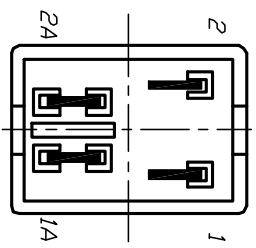
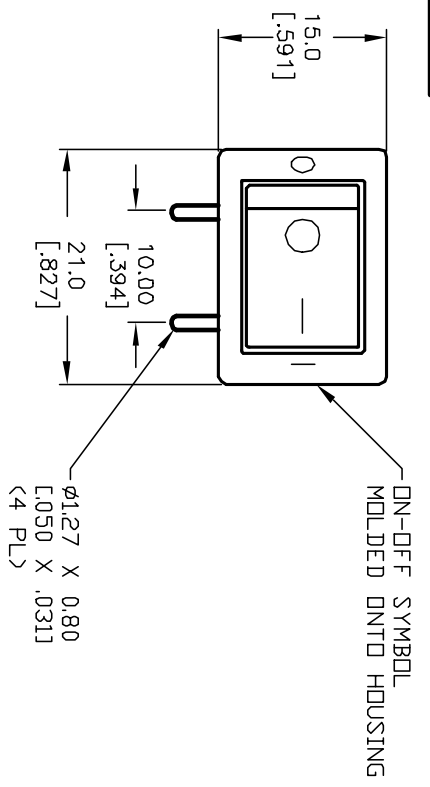
Excellent Integrated System Limited

Stocking Distributor

Click to view price, real time Inventory, Delivery & Lifecycle Information:

[E-Switch](#)
[R1973BBLKBLKFR0](#)

For any questions, you can email us directly:
sales@integrated-circuit.com



- NOTES:
1. ALL DIMENSIONS IN MM [INCH]
 2. GENERAL TOLERANCE: X:X=±0.4
X:XX=±0.25
 3. RATING: 6A @250VAC:9A @125VAC (UL, CSA)
4(1)A @250VAC (VDE, SEMEKO, NEMKO, FIMKO, DEMKO)
 4. CONTACT RESISTANCE: 20MILLIOHMS TYP. INITIAL
 5. INSULATION RESISTANCE: 1000MEGΩHMS
 6. DIELECTRICAL STRENGTHS 1500V RMS min. @SEA LEVEL
3000V RMS @SEA LEVEL
 7. MECHANICAL LIFE: 50,000 CYCLES.
 8. ELECTRICAL LIFE: 10,000 CYCLES.

PANEL THICKNESS	X
0.75-1.25 [0.30-0.49]	19.2 [0.756]
1.25-2.0 [0.49-0.79]	19.4 [0.764]
2.0-3.0 [0.79-1.18]	19.8 [0.780]

REV.	ECN No.	DESCRIPTION	DATE	CHKD
A	11634	RELEASED FOR PRODUCTION	8/30/01	CJB

THE INFORMATION CONTAINED IN THIS DOCUMENT IS PROPRIETARY TO E-SWITCH AND IS NOT TO BE COPIED OR TRANSMITTED

TITLE	SCALE	DATE	DR	DWG	REV
R1973B BLK BLK FRD	1.5:1	8/30/01	CB	M400058	A

E-SWITCH®