

Excellent Integrated System Limited

Stocking Distributor

Click to view price, real time Inventory, Delivery & Lifecycle Information:

[E-Switch](#)
[TL59BF100Q](#)

For any questions, you can email us directly:

sales@integrated-circuit.com

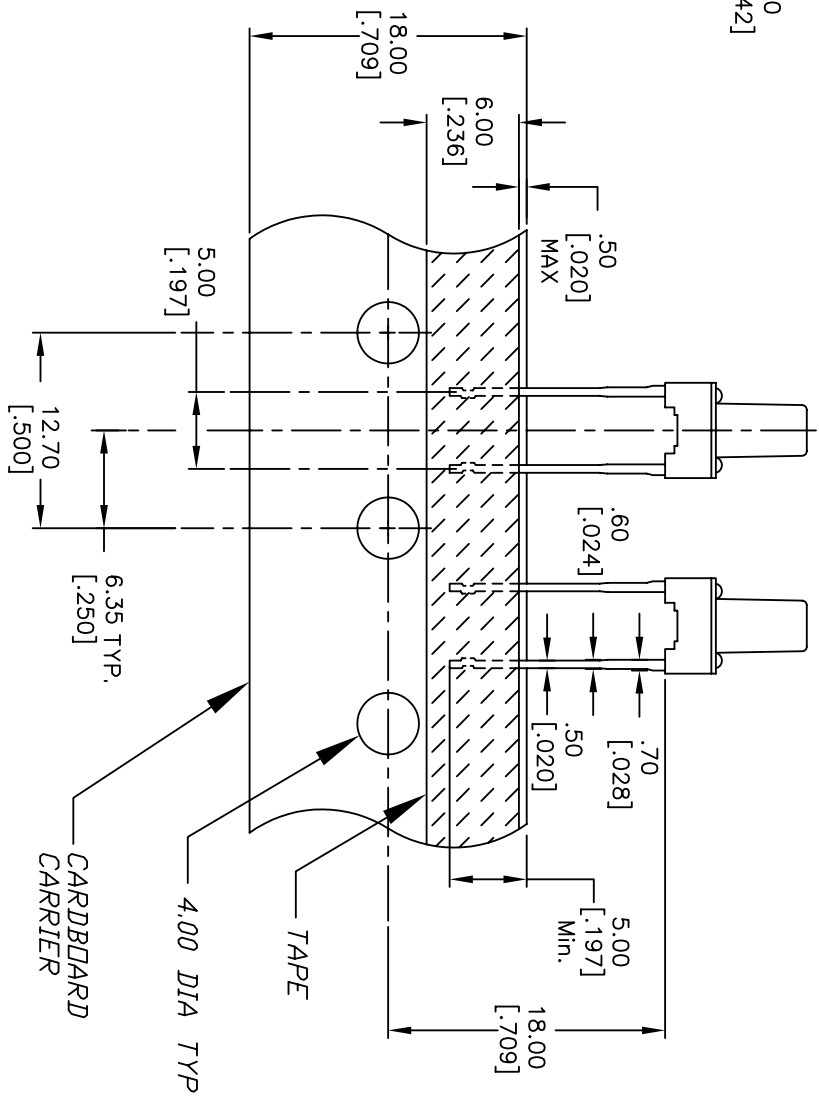
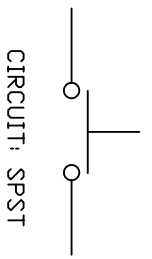
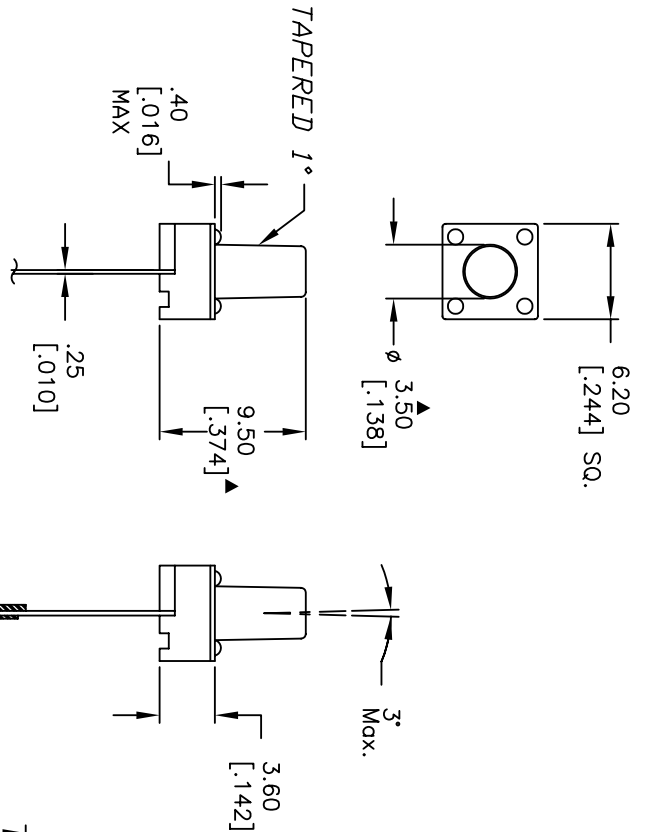
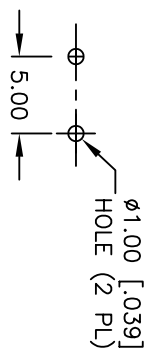
| | | | | |
|------|---------|------------------------------|-----------|------|
| REV. | ECN No. | DESCRIPTION | DATE | CHKD |
| B | 16888 | UPDATE NOTES, .30 DIM TO .25 | 1/18/2007 | TN |
| A | 11623 | RELEASED FOR PRODUCTION | 12/3/02 | CB |

| | | | | |
|-------|-----------|----|---------|-----|
| SCALE | DATE | DR | DWG | REV |
| 2:1 | 1/18/2007 | TN | P010566 | B |

E-SWITCH®

TITLE: TL59BF100Q

RECOMMENDED P.C.B. LAYOUT



- NOTES:
1. ALL DIMENSIONS IN MM [INCH]
 2. GENERAL TOLERANCE: X.X=±0.4 X.XX=±0.25
 3. CONTACT RATING: 50mA @12V DC
 4. CONTACT MATERIAL: SILVER
 5. OPERATING FORCE: 100±50gf
 6. TRAVEL: 0.25 +0.2/-0.1
 7. CONTACT RESISTANCE: 100mILLI Ohms max.
 8. ELECTRICAL LIFE: 100,000 CYCLES
 9. PACKAGING:
 CARRIER IS FOLDED EVERY 25 PITCHES (24) SWITCHES PER FOLD (1,000) SWITCHES PER BOX
 10. 2002/95/EC (ROHS) COMPLIANT
 11. ▲ DENOTES MAJOR DIMENSION.