

Excellent Integrated System Limited

Stocking Distributor

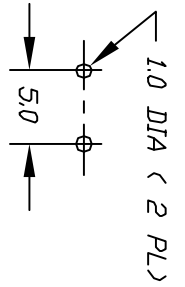
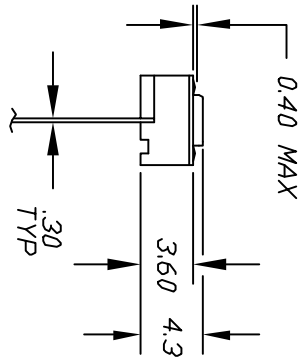
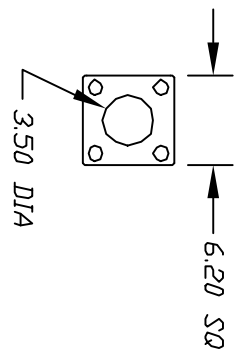
Click to view price, real time Inventory, Delivery & Lifecycle Information:

[E-Switch](#)
[TL59F260Q](#)

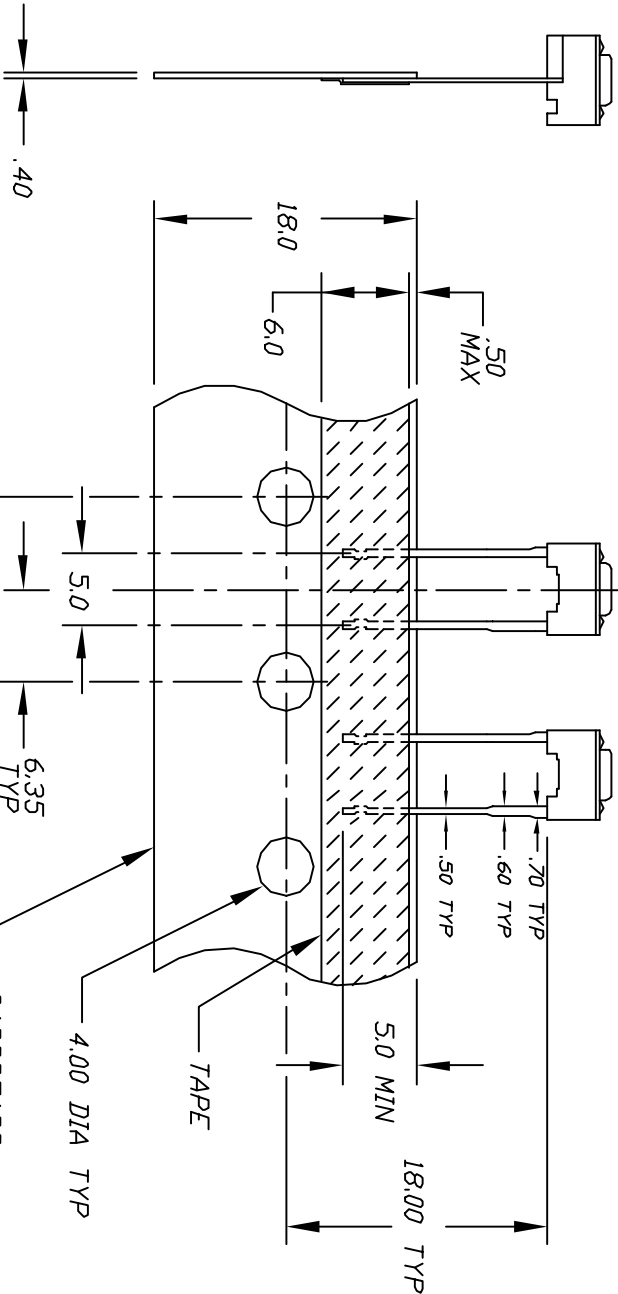
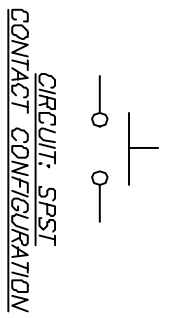
For any questions, you can email us directly:

sales@integrated-circuit.com

SHEET OF



RECOMMENDED PCB LAYOUT



- NOTES:
1. ALL DIMENSIONS IN MM
 2. GENERAL TOLERANCE: 0.0=±0.4
0.00=±0.25
 3. RATING: 50mA @12VDC
 4. OPERATING FORCE: 260±50gf
 5. TRAVEL: 0.25 +0.2/-0.1mm
 6. CONTACT RESISTANCE: 100 milli-ohm max.
 7. ELECTRICAL LIFE: 100,000 cycles
 8. CARRIER IS FOLDED EVERY 25 PITCHES
(24 SWITCHES PER FOLD)
 9. 1,000 SWITCHES PER BOX

REV.	ECN No.	DESCRIPTION	DATE	CHKD
A	10743	RELEASED FOR PRODUCTION	7/10/00	MM

SCALE	DATE	DR	DWG	REV
2:1	7/10/00	MM	P010584	A

TITLE: TL 59 F260 Q
E-SWITCH®

THE INFORMATION CONTAINED IN THIS DOCUMENT IS PROPRIETARY TO E-SWITCH AND IS NOT TO BE COPIED OR TRANSMITTED