

Excellent Integrated System Limited

Stocking Distributor

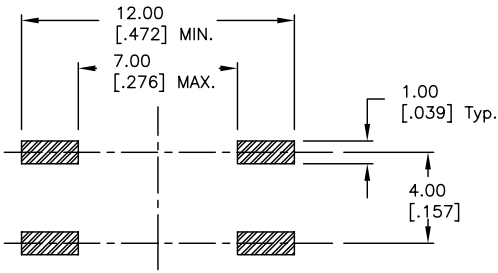
Click to view price, real time Inventory, Delivery & Lifecycle Information:

[E-Switch](#)
[TL6304BF160QG](#)

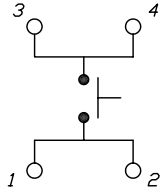
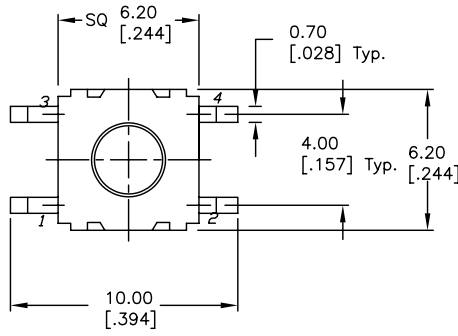
For any questions, you can email us directly:

sales@integrated-circuit.com

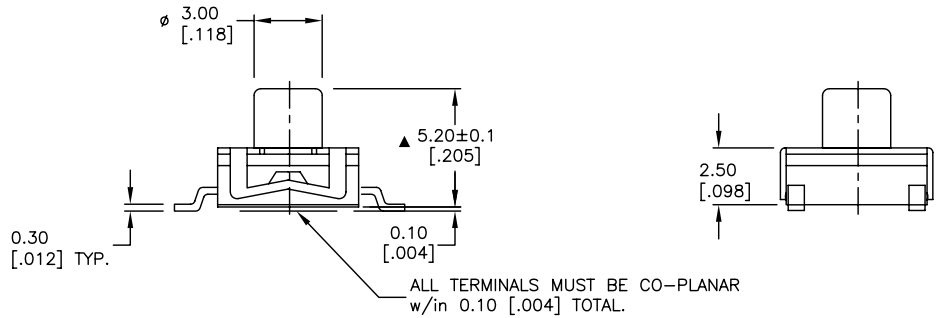
SHEET OF



RECOMMENDED P.C.B. LAYOUT



CIRCUIT: SPST
 CONTACT CONFIGURATION



- NOTES:
1. ALL DIMENSIONS IN MM [INCH]
 2. GENERAL TOLERANCE: X.X=±0.4
X.XX=±0.25
 3. TERM. NOS. FOR REF. ONLY
 4. RATING: 50mA, @12V DC
 5. TRAVEL: 0.25 +0.2/-0.1mm
 6. CONTACT RESISTANCE: 20 MILLIOHMS INITIAL.
 7. ELECTRICAL LIFE: 100,000 CYCLES
 - ▲ 8. PACKAGING: TAPE AND REEL.
 9. ▲ DENOTES CRITICAL PARAMETER.

| | | | | |
|------|---------|---------------------------|----------|------|
| F | 14917 | REMOVE EPOXY ON TERMINALS | 5/20/05 | BK |
| E | 14843 | REMOVE NOTE 9 | 4/8/05 | AR |
| D | 14482 | ADD EPOXY NOTE AND NOTE 9 | 11/10/04 | AR |
| C | 13959 | CHANGE DESCRIPTION | 4/27/04 | AR |
| B | 13623 | DIM 0.30 WAS 0.25 | 11/25/03 | AR |
| A | 12603 | RELEASED | 12/2/02 | CB |
| REV. | ECN No. | DESCRIPTION | DATE | CHKD |

E-SWITCH®

| | | | | |
|---------------|----------|----|---------|-----|
| TITLE | | | | |
| TL6304BF160QG | | | | |
| SCALE | DATE | DR | DWG | REV |
| 4:1 | 12/02/02 | CB | D310738 | F |

THE INFORMATION CONTAINED IN THIS DOCUMENT IS PROPRIETARY TO E-SWITCH AND IS NOT TO BE COPIED OR TRANSFERRED