

## Excellent Integrated System Limited

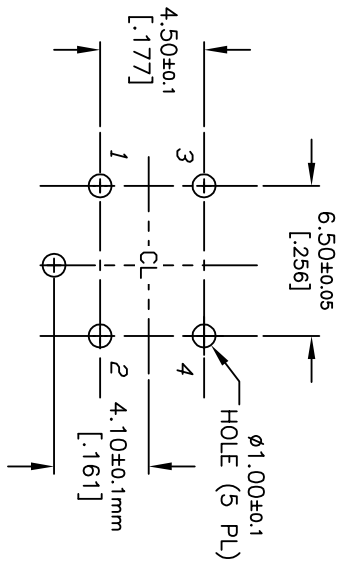
Stocking Distributor

Click to view price, real time Inventory, Delivery & Lifecycle Information:

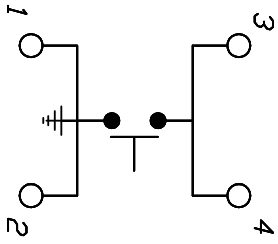
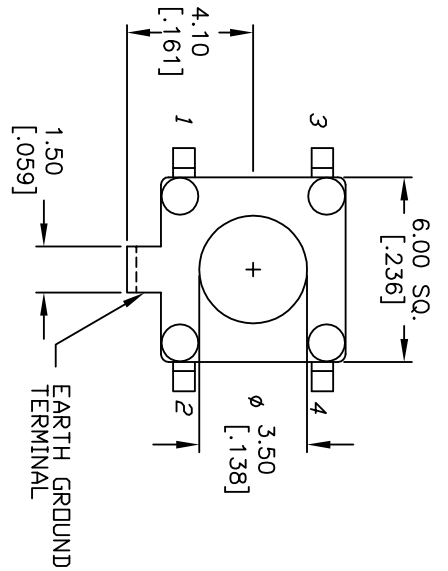
[E-Switch](#)  
[TLE1105F250Q](#)

For any questions, you can email us directly:

[sales@integrated-circuit.com](mailto:sales@integrated-circuit.com)

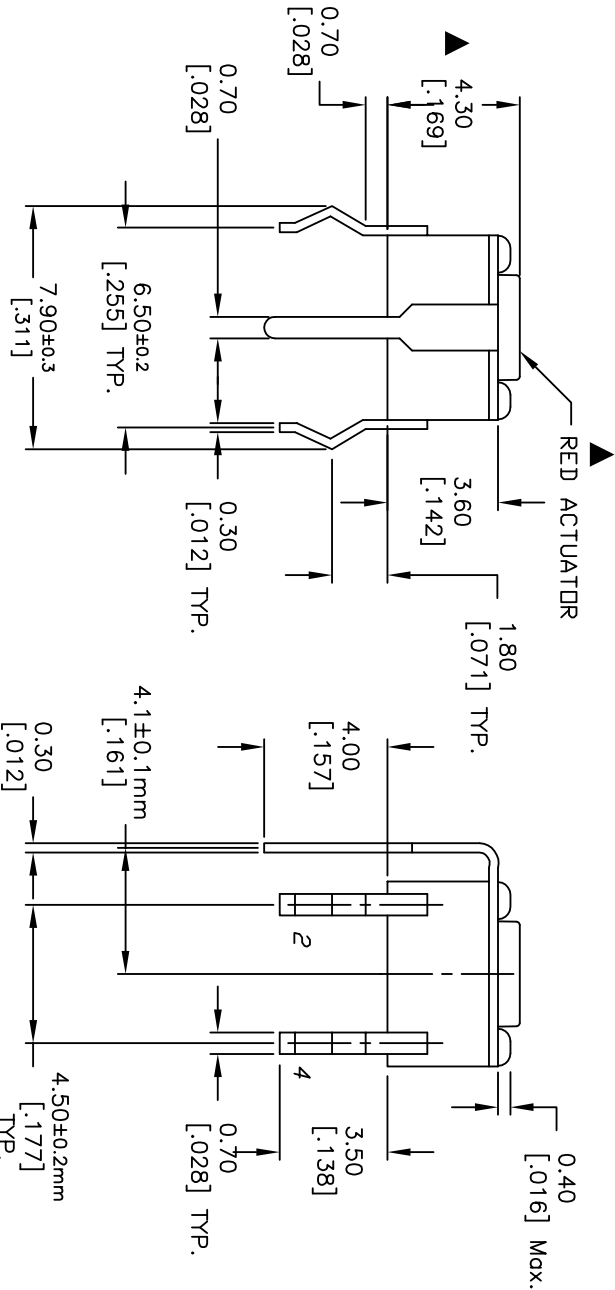


RECOMMENDED P.C.B. LAYOUT  
SCALE 3:1



CIRCUIT: SPST

- NOTES:
1. ALL DIMENSIONS IN MM [INCH]
  2. GENERAL TOLERANCE: X.X=±0.25 X.XX=±0.25
  3. TERM. NOS. FOR REFERENCE ONLY.
  4. RATINGS: 12VDC, 50mA
  5. CONTACT MATERIAL: SILVER
  6. OPERATING FORCE: 250±50gf
  7. TRAVEL: 0.25±0.1mm
  8. CONTACT RESISTANCE: 100 MILLI Ω Max.
  9. DIELECTRIC STRENGTH: 250V RMS min.
  10. INSULATION RESISTANCE: 100 Mega Ω min.
  11. ELECTRICAL LIFE: 100,000 CYCLES min.
  12. ▲ DENOTES CRITICAL PARAMETER
  13. 2002/95/EC (ROHS) COMPLIANT



REV.	ECN No.	DESCRIPTION	DATE	CHKD
B	17636	ADDED NOTES 12,13	9/13/07	BF
A	11903	RELEASED FOR PRODUCTION	2/5/02	CJB

SCALE	DATE	DR	DWG	REV
4:1	9/13/07	BF	P010110	B

**E-SWITCH**

TLE1105F250Q

THE INFORMATION CONTAINED IN THIS DOCUMENT IS PROPRIETARY TO E-SWITCH AND IS NOT TO BE COPIED OR TRANSFERRED