

## Excellent Integrated System Limited

Stocking Distributor

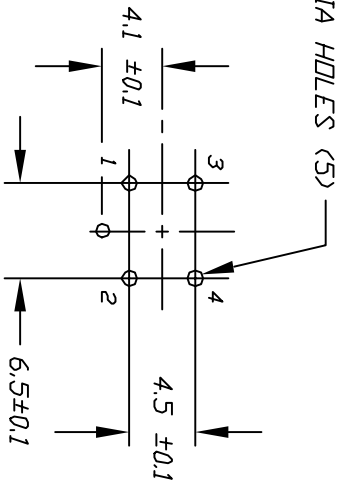
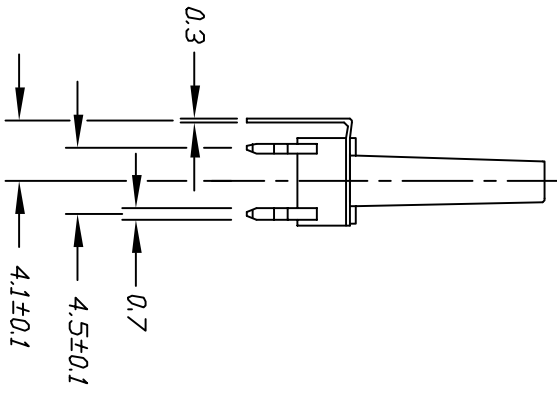
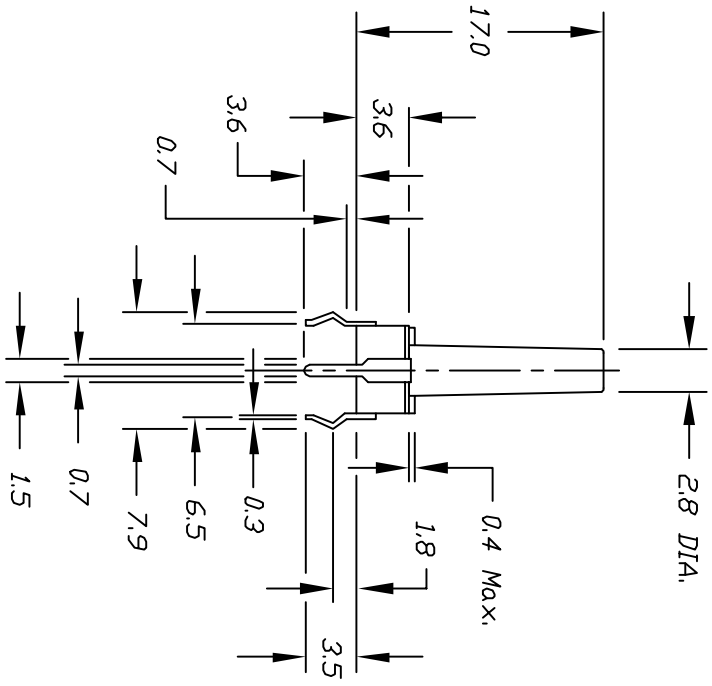
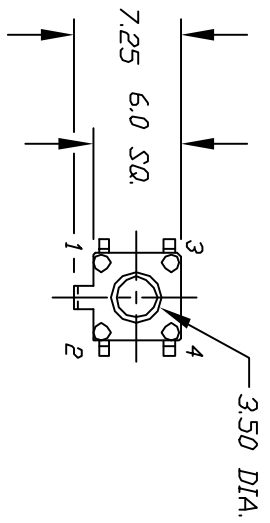
Click to view price, real time Inventory, Delivery & Lifecycle Information:

[E-Switch](#)  
[TLE1105LF160Q](#)

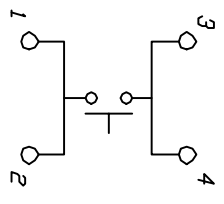
For any questions, you can email us directly:

[sales@integrated-circuit.com](mailto:sales@integrated-circuit.com)

SHEET 0F



RECOMMEND P.C.B. HOLES



CIRCUIT: SPST

CONTACT CONFIGURATION

NOTES:

1. ALL DIMENSIONS IN MM
2. TERM NOS. FOR REF ONLY
4. TRAVEL: 0.25 +0.2/-0.1 mm
5. CONTACT RESISTANCE :100m Ohms Max.

REV.	DESCRIPTION	DATE	CHKD
A	RELEASED FOR PRODUCTION		

TOLERANCES	
0.0	±0.4
0.00	±0.25

SCALE	DATE	DR	DWG	REV
2:1	12/10/96	MM	P010109	A

**E-SWITCH®**

TLE 1105L (160 GF/17mm BLK) Q