

Excellent Integrated System Limited

Stocking Distributor

Click to view price, real time Inventory, Delivery & Lifecycle Information:

[Pulse Electronics Corporation](#)
[HX5084NL](#)

For any questions, you can email us directly:
sales@integrated-circuit.com

HX5084NL
 NOTICE: THE INFORMATION AND DESIGN CONTAINED HEREIN IS THE PROPERTY OF PULSE WHO RESERVES ALL RIGHTS THERETO.


1. **WARNING:** THIS COMPONENT IS RECOGNIZED BY ONE OR MORE SAFETY AGENCIES SUCH AS UL, VDE, CSA AND/OR TUV. ALL ENGINEERING CHANGES MUST HAVE PRIOR APPROVAL BY THE DESIGN CENTER QUALITY DEPARTMENT FOR SAFETY AGENCY COMPLIANCE.

ECN APPROVAL:
QA APPROVAL:
DATE:

2. **NOTICE:** THIS IS A RoHS COMPLIANT COMPONENT/PRODUCT. ALL ENGINEERING CHANGES MUST HAVE PRIOR APPROVAL BY THE DESIGN CENTER.

RoHS

- 3. HEADER: THERMOPLASTIC MATERIAL WITH FLAMMABILITY RATING 94V-0 OR BETTER.
- 4. TERMINAL PINS: COPPER ALLOY.
- 5. PCB CONTACTS SOLDER AREA: SN100C TIN PLATING.
- 6. SOLDERABILITY: CONFORMS TO ANSI/J-STD-002, IPC/EIA J-STD-003A.
- 7. OPERATING TEMPERATURE: -40°C TO +85°C
- 8. STORAGE TEMPERATURE: -55°C TO +125°C
- 9. JEDEC MOISTURE: LEVEL 1

		DATASHEET	
SIZE	CAGE CODE	DWG. NO.	REV.
B	01961	HX5084NL	M2
SCALE	CADD FILE	SHEET	
NONE	HX5084NL-1	1 OF 3	

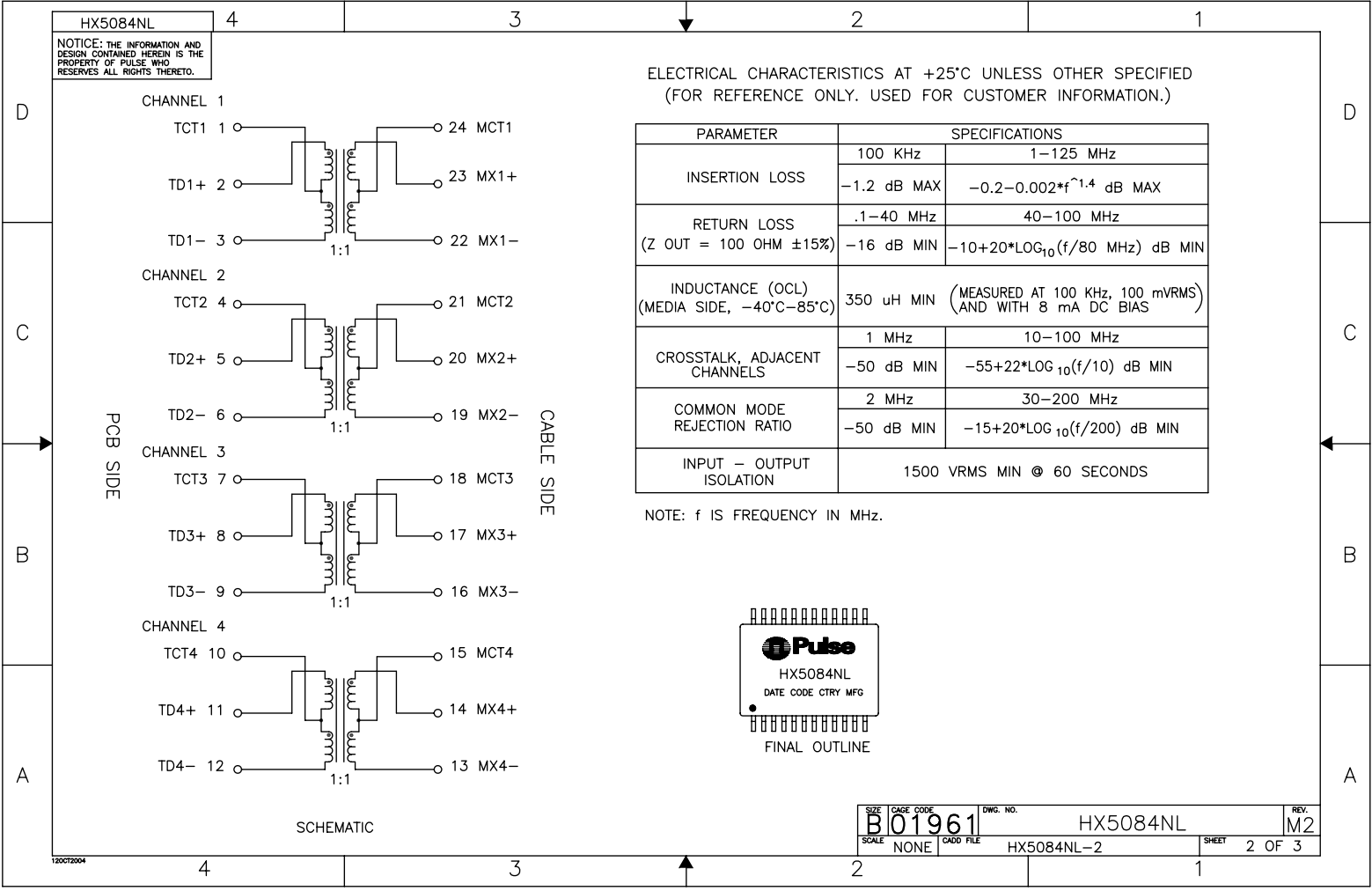
120072004

HX5084NL
NOTICE: THE INFORMATION AND DESIGN CONTAINED HEREIN IS THE PROPERTY OF PULSE WHO RESERVES ALL RIGHTS THERETO.

ELECTRICAL CHARACTERISTICS AT +25°C UNLESS OTHER SPECIFIED
(FOR REFERENCE ONLY. USED FOR CUSTOMER INFORMATION.)

PARAMETER	SPECIFICATIONS	
	100 KHz	1-125 MHz
INSERTION LOSS	-1.2 dB MAX	-0.2-0.002*f ^{1.4} dB MAX
	.1-40 MHz	40-100 MHz
RETURN LOSS (Z OUT = 100 OHM ±15%)	-16 dB MIN	-10+20*LOG ₁₀ (f/80 MHz) dB MIN
INDUCTANCE (OCL) (MEDIA SIDE, -40°C-85°C)	350 uH MIN (MEASURED AT 100 KHz, 100 mVRMS AND WITH 8 mA DC BIAS)	
CROSSTALK, ADJACENT CHANNELS	1 MHz	10-100 MHz
	-50 dB MIN	-55+22*LOG ₁₀ (f/10) dB MIN
COMMON MODE REJECTION RATIO	2 MHz	30-200 MHz
	-50 dB MIN	-15+20*LOG ₁₀ (f/200) dB MIN
INPUT - OUTPUT ISOLATION	1500 VRMS MIN @ 60 SECONDS	

NOTE: f IS FREQUENCY IN MHZ.

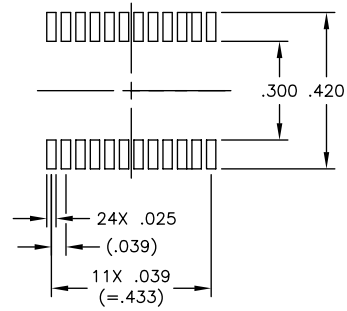
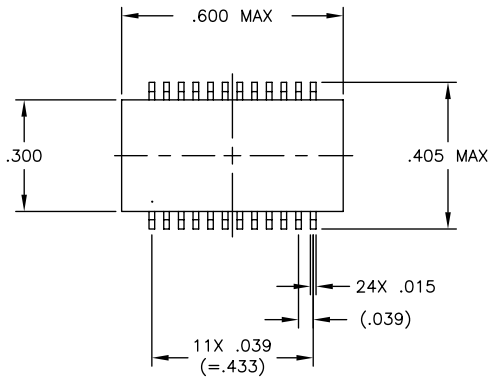


SIZE	CAGE CODE	DWG. NO.	REV.
B01961		HX5084NL	M2
SCALE	CADD FILE	SHEET	
NONE	HX5084NL-2	2 OF 3	

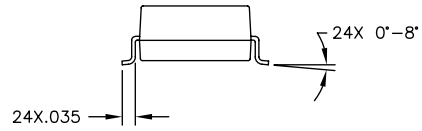
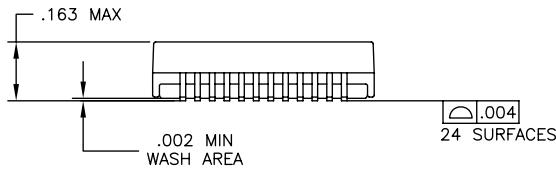
12OCT2004

HX5084NL

NOTICE: THE INFORMATION AND DESIGN CONTAINED HEREIN IS THE PROPERTY OF PULSE WHO RESERVES ALL RIGHTS THERETO.



SUGGESTED LAND PATTERN



UNLESS OTHERWISE SPECIFIED, ALL DIMENSIONS ARE IN INCHES
TOLERANCES ARE:
DECIMALS ± .01
ANGLES ± 1°
.XX ± .01
.XXX ± .005
DO NOT SCALE DRAWING

SIZE	CAGE CODE	DWG. NO.	REV.
A301961		HX5084NL	M2
SCALE	CADD FILE	SHEET	
NONE	HX5084NL-3	3 OF 3	

PS-2325.001-B