

Excellent Integrated System Limited

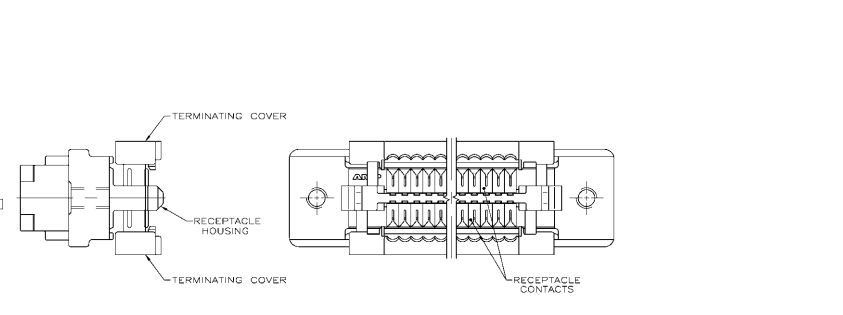
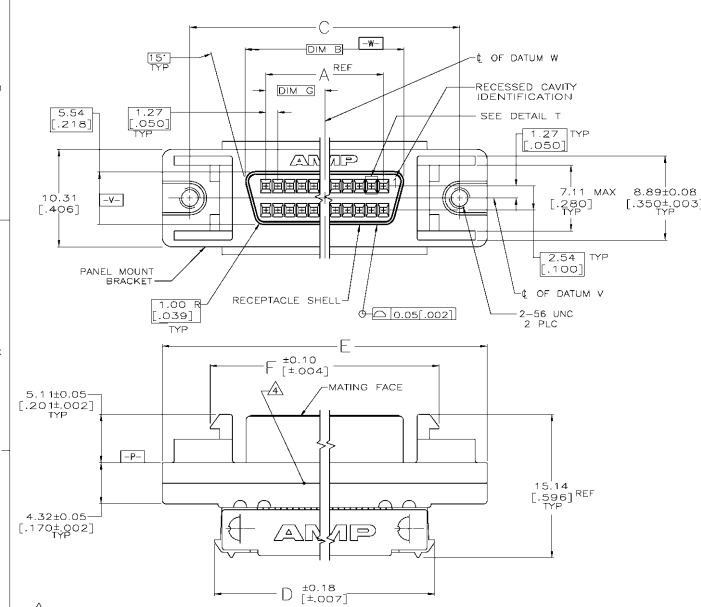
Stocking Distributor

Click to view price, real time Inventory, Delivery & Lifecycle Information:

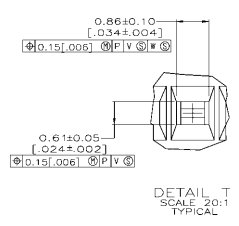
[TE Connectivity AMP Connectors](#)
[749611-5](#)

For any questions, you can email us directly:

sales@integrated-circuit.com



- △ MATERIALS:
 RECEPTACLE CONTACTS- PHOSPHOR BRONZE.
 RECEPTACLE SHELL- STEEL.
 PANEL MOUNT BRACKET- ZINC.
 RECEPTACLE HOUSING AND TERMINATION COVERS- UL V-0 RATED THERMOPLASTIC.
 COLOR: BLACK.
- △ PLATING:
 RECEPTACLE CONTACTS- 0.76µm [.000030] MIN GOLD IN CONTACT AREA.
 1.27µm [.000050] MIN TIN-LEAD IN TERMINATION AREA.
 ALL OVER 1.27µm [.000050] MIN NICKEL.
 RECEPTACLE SHELL- 5.08µm [.000200] MIN NICKEL OVER
 1.27µm [.000050] MIN COPPER.
 PANEL MOUNT BRACKET- 5.08µm [.000200] MIN NICKEL OVER
 7.62µm [.000300] MIN COPPER.
- 3. RECOMMENDED WIRE:
 28 AWG OR 30 AWG, SOLID OR 7 STRANDED, WITH A 0.74-0.91 [.029-.036]
 INSULATION DIA. OR AMP .050 CENTERLINE 28 AWG, STRANDED, PVC,
 FLAT GRAY RIBBON CABLE. WIRE MUST BE APPROVED BY AMP INCORPORATED.
- △ DATE CODE THIS AREA, EITHER SIDE, SEE TABLE.
- △ OBSOLETE PART NUMBER.
- △ PLATING:
 RECEPTACLE CONTACTS- 0.76µm [.000030] MIN GOLD IN CONTACT AREA.
 1.27µm [.000050] MIN TIN IN TERMINATION AREA.
 ALL OVER 1.27µm [.000050] MIN NICKEL.
 RECEPTACLE SHELL- 5.08µm [.000200] MIN NICKEL OVER
 1.27µm [.000050] MIN COPPER.
 PANEL MOUNT BRACKET- 5.08µm [.000200] MIN NICKEL OVER
 7.62µm [.000300] MIN COPPER.
- △ PRELIMINARY PART



△	NO	7.62	27.05	37.21	26.14	31.24	19.46	15.24		
		[.300]	[1.065]	[1.465]	[1.029]	[1.230]	[.766]	[.600]		
△	YES	15.24	42.29	52.45	41.38	46.48	34.70	30.48	50	△ 1-749611-1
		[.600]	[1.665]	[2.065]	[1.629]	[1.830]	[1.366]	[1.200]		
△	NO	37.46	86.74	96.90	85.83	90.93	79.15	74.93	120	△ 1-749611-0
		[1.475]	[3.415]	[3.815]	[3.379]	[3.580]	[3.116]	[2.980]		
△	NO	31.12	74.04	84.20	73.13	78.23	66.45	62.23	100	749611-9
		[1.225]	[2.915]	[3.315]	[2.879]	[3.080]	[2.616]	[2.450]		
△	NO	24.76	61.34	71.50	60.43	65.53	53.75	49.53	80	749611-8
		[.975]	[2.415]	[2.815]	[2.379]	[2.580]	[2.116]	[1.950]		
△	NO	20.96	53.72	63.88	52.81	57.91	46.13	41.91	68	749611-7
		[.825]	[2.115]	[2.515]	[2.079]	[2.280]	[1.816]	[1.650]		
△	YES	15.24	42.29	52.45	41.38	46.48	34.70	30.48	50	749611-5
		[.600]	[1.665]	[2.065]	[1.629]	[1.830]	[1.366]	[1.200]		
△	NO	12.06	35.94	46.10	35.03	40.13	28.35	24.13	40	749611-4
		[.475]	[1.415]	[1.815]	[1.379]	[1.580]	[1.116]	[.950]		
△	NO	8.26	28.32	38.48	27.41	32.51	20.73	16.51	28	749611-3
		[.325]	[1.115]	[1.515]	[1.079]	[1.280]	[.816]	[.650]		
△	NO	5.72	23.24	33.40	22.33	27.43	15.65	11.43	20	749611-2
		[.225]	[.915]	[1.315]	[.879]	[1.080]	[.616]	[.450]		
△	NO	7.62	27.05	37.21	26.14	31.24	19.46	15.24	26	749611-1
		[.300]	[1.065]	[1.465]	[1.029]	[1.230]	[.766]	[.600]		
	FINISH	DATE CODE	G	F	E	D	C	B	A	NO OF PINS

THIS DRAWING IS A CONTROLLED DOCUMENT. **AMP** **TE CONNECTIVITY**

RECEPTACLE CABLE ASSEMBLY, PANEL MOUNT, AMPILMATE IDC Series

DATE CODE: 114-40029
 PART NO: A100779-749611
 CUSTOMER DRAWING