



Excellent Integrated System Limited

Stocking Distributor

Click to view price, real time Inventory, Delivery & Lifecycle Information:

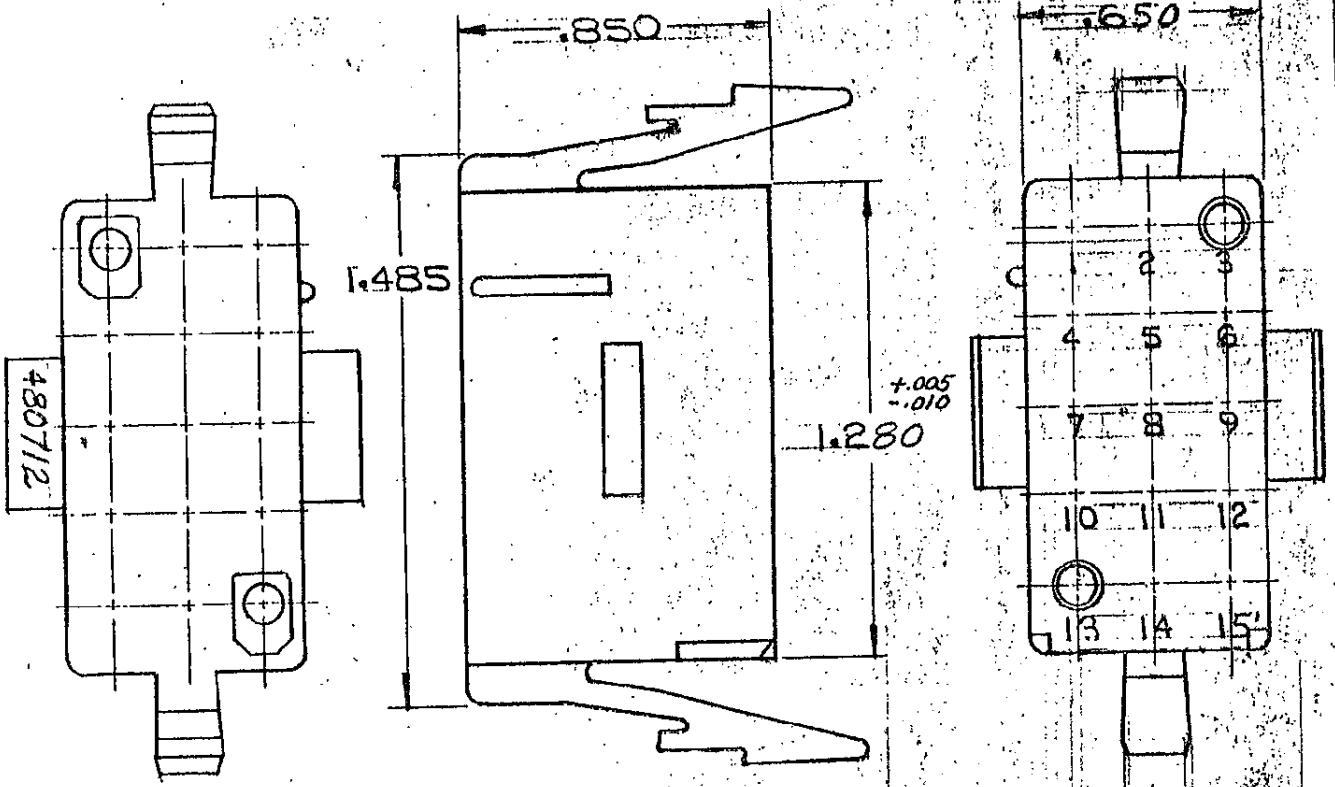
[TE Connectivity AMP Connectors](#)
[1-480712-0](#)

For any questions, you can email us directly:

sales@integrated-circuit.com

SHEET 1 OF 2
 NUMBER
 480712

DRAWING MADE IN AMERICAN PROJECTION



- 1. MATES WITH CAP 480713
- 2. TO BE USED WITH MATE-N-LOK DUAL LANCE SOCKETS.

HOUSING	MATERIAL	COLOR
1-480712-0	NYLON	NATURAL

DIMENSIONS IN INCHES. DO NOT SCALE PRINT.

Unpublished copy not to be reproduced nor published without written permission of AMP Inc.

©1973 BY AMP INCORPORATED. ALL RIGHTS RESERVED. AMP PRODUCTS COVERED BY PATENTS AND/OR PATENTS PENDING MATERIAL AND FINISH.

**CUSTOMER COPY
 REFERENCE ONLY**



AMP INCORPORATED
 HARRISBURG, PENNA.

SEE TABLE

CLASS .084 SOCKET HOUSING

WIRE RANGE — INSULATION TYPE

PANEL MOUNT

REV	REVISION RECORD	ECN	DR	CHK	DATE
F	0BS-2 PEREC0730-0129-96		JH	RS	4/26/73

TOLERANCE EXCEPT AS NOTED ± .010 ± 1° 0'

SCALE NTS

LOC CM

NO. 480712

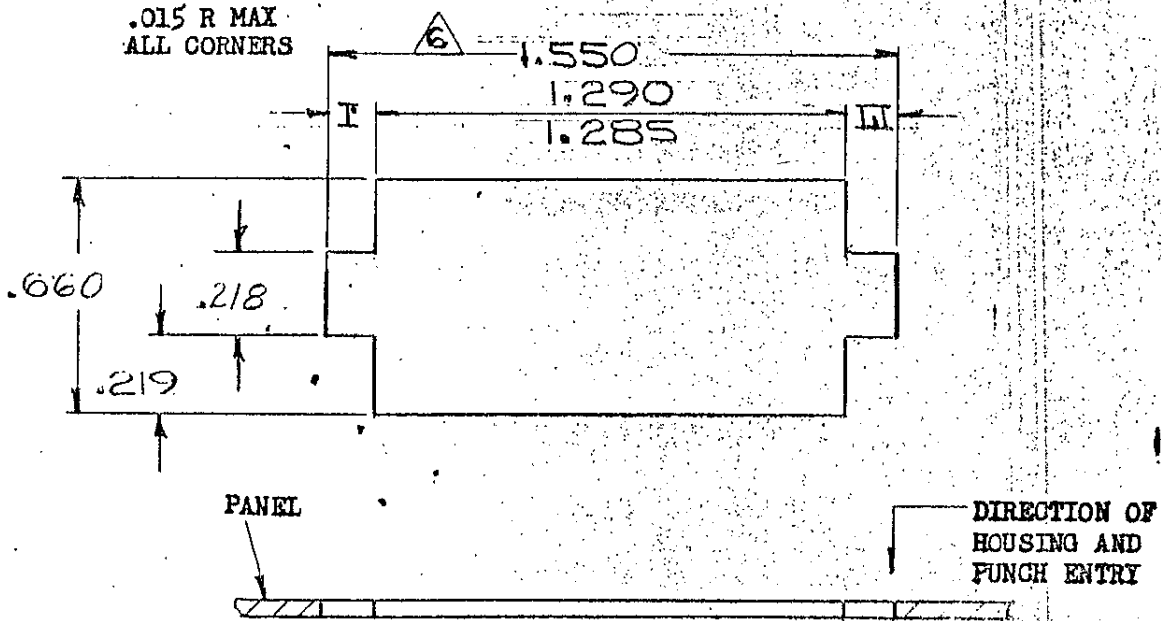
REV F

DR: *[Signature]* 3-21-73
 DE: *[Signature]* 3-21-73
 CHK: *[Signature]* 3-21-73
 APP: *[Signature]* 3-21-73

NAME 15 CIRCUIT MATE-N-LOK PLUG DUAL LANCE HOUSING

DRAWING MADE IN AMERICAN PROJECTION

SHEET 2 OF 2
 NUMBER 480712



- NOTE:
1. Recommended panel thickness .025 - .065.
 2. Both locking legs to be squeezed together and housing to be inserted straight-in, as opposed to a rocking manner of insertion.
 3. The panel must be punched so that the housing enters the panel in the same direction as the punch.
 4. Dimensions I and II to be equal within .005.
 5. Panel must not have any material (paint, porcelain, etc.) applied in the mounting hole area that would decrease retention of the housing in the panel.

⚠ IF NOTES 3 AND/OR 5 ARE NOT COMPLIED WITH, THE 1.550 DIMENSION SHOULD BE REDUCED TO 1.530 TO ASSURE PROPER HOUSING RETENTION IN THE PANEL.

DIMENSIONS IN INCHES. DO NOT SCALE PRINT

©1973 BY AMP, INCORPORATED. ALL RIGHTS RESERVED. AMP PRODUCTS COVERED BY PATENTS AND/OR PATENTS PENDING

CUSTOMER COPY
 REFERENCE ONLY

MATERIAL AND FINISH



AMP INCORPORATED
 HARRISBURG, PENNA.

CLASS

WIRE — RANGE — INSULATION

TYPE

LTR REVISION RECORD ECN DR CHK DATE

TOLERANCE EXCEPT AS NOTED
 ± .005 ± .1°

SCALE

NTS

LOC

CM

NO SHEET 2 OF 2

480712

REV

F

DR *L.J. Holloman* DE *Shumble* 3-21-73

CHK *244/John Winger* APP *Shumble* 3-21-73

NAME RECOMMENDED MOUNTING INFORMATION
 15 CIRCUIT MATE-N-LOK PANEL MOUNT PLUG

PRINT DIST 53