

Excellent Integrated System Limited

Stocking Distributor

Click to view price, real time Inventory, Delivery & Lifecycle Information:

[TE Connectivity AMP Connectors](#)
[3-641169-2](#)

For any questions, you can email us directly:
sales@integrated-circuit.com

1

2

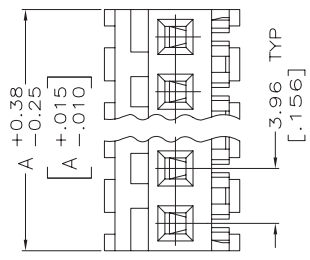
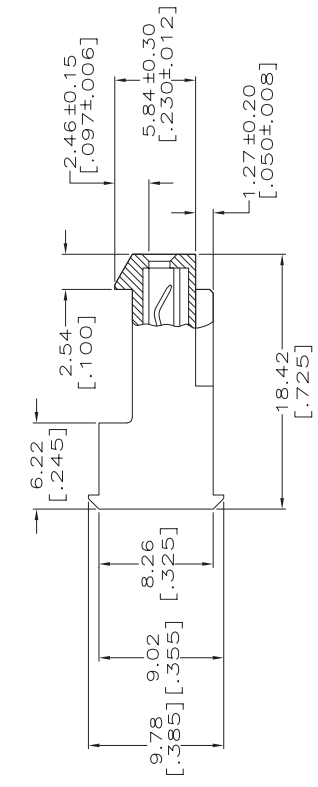
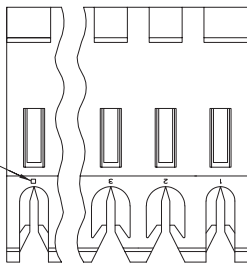
3

4

THIS DRAWING IS UNPUBLISHED. RELEASED FOR PUBLICATION BY TYCO ELECTRONICS CORPORATION. ALL RIGHTS RESERVED. © COPYRIGHT

LOC	DIST	P	LINK	DATE	OWN	APRO
CM	O	H	ECC-07-012879	21JUN07	KW	DB

REVISIONS	
DESCRIPTION	DATE



DIM A	DIM A	NO. OF CIRCUITS	PART NO.
95.10	[3.744]	24	5-641169-4
91.14	[3.588]	23	5-641169-3
87.17	[3.432]	22	5-641169-2
83.21	[3.276]	21	5-641169-1
79.25	[3.120]	20	5-641169-0
75.29	[2.964]	19	4-641169-9
71.32	[2.808]	18	4-641169-8
67.36	[2.652]	17	4-641169-7
63.40	[2.496]	16	4-641169-6
59.44	[2.340]	15	4-641169-5
55.47	[2.184]	14	4-641169-4
51.51	[2.028]	13	4-641169-3
47.55	[1.872]	12	4-641169-2
43.59	[1.716]	11	4-641169-1
39.62	[1.560]	10	4-641169-0
35.66	[1.404]	9	3-641169-9
31.70	[1.248]	8	3-641169-8
27.74	[1.092]	7	3-641169-7
23.77	[0.936]	6	3-641169-6
19.81	[0.780]	5	3-641169-5
15.85	[0.624]	4	3-641169-4
11.89	[0.468]	3	3-641169-3
7.92	[0.312]	2	3-641169-2
95.10	[3.744]	24	2-641169-4
91.14	[3.588]	23	2-641169-3
87.17	[3.432]	22	2-641169-2
83.21	[3.276]	21	2-641169-1
79.25	[3.120]	20	2-641169-0
75.29	[2.964]	19	1-641169-9
71.32	[2.808]	18	1-641169-8
67.36	[2.652]	17	1-641169-7
63.40	[2.496]	16	1-641169-6
59.44	[2.340]	15	1-641169-5
55.47	[2.184]	14	1-641169-4
51.51	[2.028]	13	1-641169-3
47.55	[1.872]	12	1-641169-2
43.59	[1.716]	11	1-641169-1
39.62	[1.560]	10	1-641169-0
35.66	[1.404]	9	641169-9
31.70	[1.248]	8	641169-8
27.74	[1.092]	7	641169-7
23.77	[0.936]	6	641169-6
19.81	[0.780]	5	641169-5
15.85	[0.624]	4	641169-4
11.89	[0.468]	3	641169-3
7.92	[0.312]	2	641169-2

OWN	LEWIS	3-11-98	3-11-98
CHK	SWING		
APPRO			
TOLERANCES UNLESS OTHERWISE SPECIFIED:			
0 P/LC	#		
1 P/LC	#		
2 P/LC	#		
3 P/LC	#	0.13	[0.05]
ANGLES	#		
FINISH			
DIMENSIONS: mm (INCHES)			
PRODUCT SPEC: 108-1051			
APPLICATION SPEC: 114-1020			
WEIGHT: -			
MATERIAL: -			
CUSTOMER DRAWING: -			
THIS DRAWING IS A CONTROLLED DOCUMENT.			
Tyco Electronics Corporation Harrisburg, Pa 17105-3608			
NAME: MTA-156 CONNECTOR ASSEMBLY, 20 AWG, STANDARD			
SIZE	DATE CODE	DRAWING NO	RESTRICTED TO
A2	00779	641169	-
SCALE: 4:1			SHEET 1 OF 1



1. MATERIAL: NYLON UL94V-2 (YELLOW).
CONNECTORS - 0.30[0.12] THICK COPPER ALLOY.
CONTACTS - 0.0038[0.00015] GOLD IN CONTACT AREA.
PLATING - 0.00203[0.00080] MIN THICKNESS BRIGHT TIN-LEAD IN SLOT AREA FOR 641169-2 THRU 2-641169-4 OR MATTE WHISKER MITIGATED TIN IN THE SLOT AREA FOR 3-641169-2 THRU 5-641169-4 OVER NICKEL UNDERPLATE.
2. CONTACTS ACCEPT 20 AWG WIRE WITH 2.41[.095] MAX INSULATION DIAMETER.
3. CONTACTS MUST ACCEPT 1.14±0.03[.045±.001] SQUARE POST AND REMAIN LOCKED IN POSITION.
4. IDENTIFICATION NUMBER FOR LAST CIRCUIT MAY NOT APPEAR ON ALL ASSEMBLIES.
5. DIMENSIONS IN BRACKETS ARE IN INCHES.
6. HOUSING FEATURES ARE: FEED-THRU WITH LOCKING RAMP.

7. NOTE DELETED.
8. NOTE DELETED.