

Excellent Integrated System Limited

Stocking Distributor

Click to view price, real time Inventory, Delivery & Lifecycle Information:

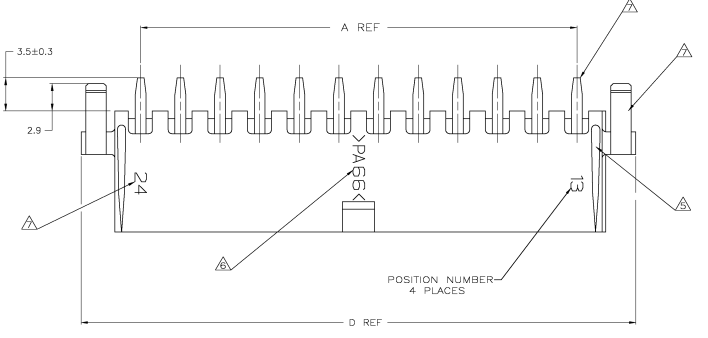
[TE Connectivity AMP Connectors](#)
[1-1586490-0](#)

For any questions, you can email us directly:

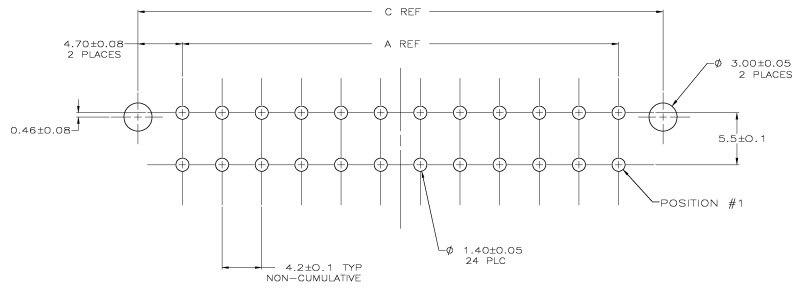
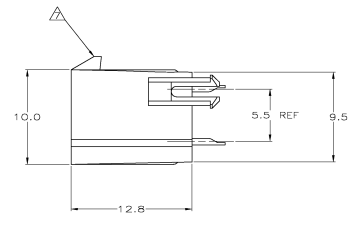
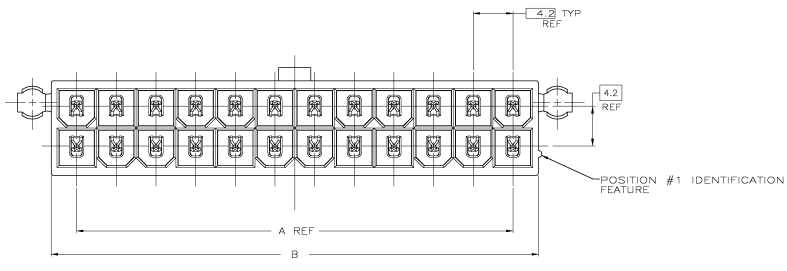
sales@integrated-circuit.com

THIS DRAWING IS UNCLASSIFIED
 UNLESS INDICATED OTHERWISE
 ALL RIGHTS RESERVED

REV	DATE	DESCRIPTION	BY	CHK	APP
CM	00				
0		REVISED PER 02038-1111-04			



- △ MATERIAL: HOUSING - NYLON UL94V-2 (COLOR - NATURAL, COLOR OF PARTS MAY VARY). CONTACTS - 0.25 THK COPPER ALLOY.
- △ CONTACT FINISH: 0.00075 MIN THK GOLD PLATE ON PIN MATING SURFACE, 0.003 MIN THK TIN PLATE ON SOLDER TAIL, ALL OVER 0.00127 MIN THK NICKEL BASE PLATE.
- 3. SOLDER TAIL MEETS AMP SOLDERABILITY SPECIFICATION 109-11-2.
- 4. MATES WITH SIMILARLY PLATED AMP-DUAC™ POWER CONNECTOR RECEPTACLE HOUSINGS/SOCKET CONTACTS.
- △ RIBS ON FOUR CORNERS OPTIONAL.
- △ AMP LOGO AND MATERIAL ID MAY BE LOCATED ON EITHER LONG SIDE OF PART.
- △ SIZE, SHAPE OR STYLE OF THIS FEATURE MAY VARY.



RECOMMENDED MOUNTING HOLE PATTERN FOR 1.78 MAX THICK P.C. BOARD COMPONENT SIDE SHOWN

58.8	55.6	51.6	46.2	24	2-1586490-4
54.6	51.4	47.4	42.0	22	2-1586490-2
50.4	47.2	43.2	37.8	20	2-1586490-0
46.2	43.0	39.0	33.6	18	1-1586490-8
42.0	38.8	34.8	29.4	16	1-1586490-6
37.8	34.6	30.6	25.2	14	1-1586490-4
33.6	30.4	26.4	21.0	12	1-1586490-2
29.4	26.2	22.2	16.8	10	1-1586490-0
25.2	22.0	18.0	12.6	8	1586490-8
21.0	17.8	13.8	8.4	6	1586490-6
16.8	13.6	9.6	4.2	4	1586490-4
12.6	9.4	5.4	0.0	2	1586490-2
D	C	B	A	NO. OF POSITIONS	PART NO

THIS DRAWING IS A CONTROLLED DOCUMENT

DATE	REV	BY	CHK	APP	DESCRIPTION

ASSEMBLY - HEADER, VERTICAL, GOLD PLATED, W/PINS, W/O DRAN HOLES, SHV-2,AMP-DUAC

SIZE: 108-1699

DATE: 01/07/79

REVISED TO: 1586490

CUSTOMER DRAWING

