

Excellent Integrated System Limited

Stocking Distributor

Click to view price, real time Inventory, Delivery & Lifecycle Information:

[Eaton \(formerly Cooper Bussmann\)](#)
[STD10](#)

For any questions, you can email us directly:

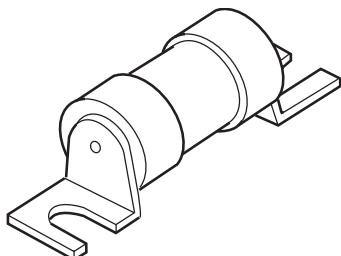
sales@integrated-circuit.com

Industrial HRC Fuse

12 x 47mm, BS88, IEC 269-1

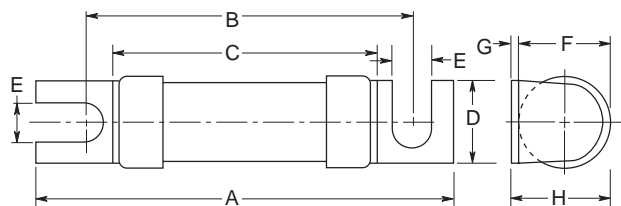
Offset Bolted Tags

STD

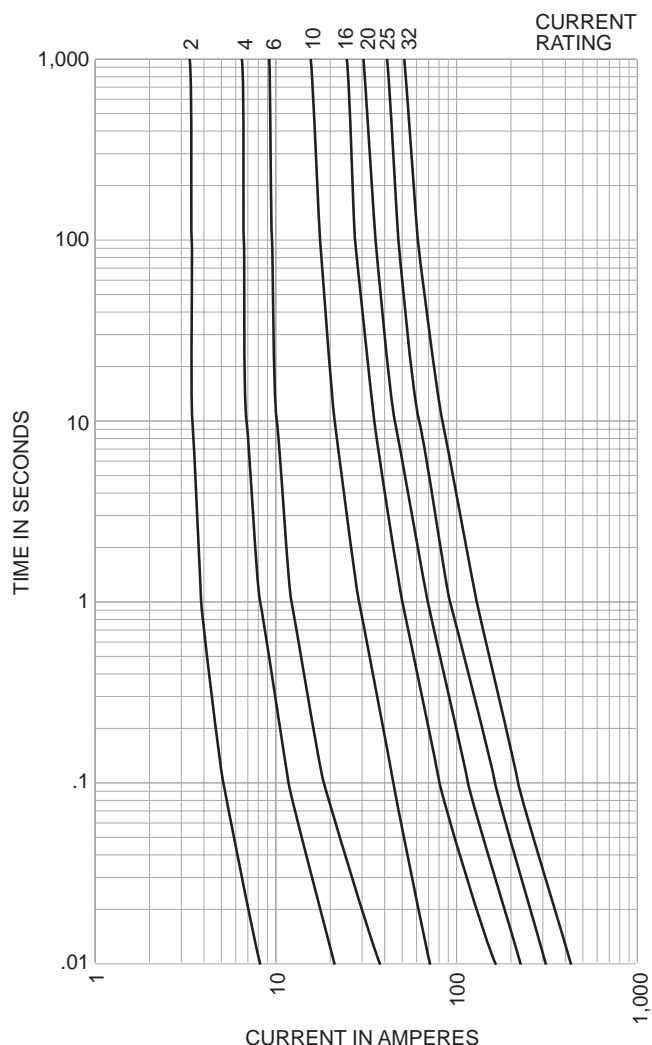


CATALOG SYMBOL: STD
INDUSTRIAL HRC FUSE
OFFSET BOLTED TAGS
PACKAGE QUANTITY: 20
33kA INTERRUPTING RATING

Dimensional Data:



Time-Current Characteristic Curve (Full Size Curves Available)



Electrical Characteristics

Catalog Number	Ampere Rating	I ² T (Amp ² Seconds)		Watts Loss	Nom Rated Voltage	Dimensions (Inches/mm)							
		Pre-Arcing	Total At 240V			A	B	C	D	E	F	G	H
STD2	2	0.8	1	0.5	240AC	47.0	35.0	24.0	11.0	4.7	12.1	1.0	13.1
STD4	4	5.4	8	1									
STD6	6	15	22	1.6									
STD10	10	28	42	1.2									
STD16	16	160	2500	1.5									
STD20	20	293	450	1.7									
STD25	25	800	1300	1.8									
STD32	32	1600	2500	2.4									

The only controlled copy of this BIF document is the electronic read-only version located on the Bussmann Network Drive. All other copies of this BIF document are by definition uncontrolled. This bulletin is intended to clearly present comprehensive product data and provide technical information that will help the end user with design applications. Bussmann reserves the right, without notice, to change design or construction of any products and to discontinue or limit distribution of any products. Bussmann also reserves the right to change or update, without notice, any technical information contained in this bulletin. Once a product has been selected, it should be tested by the user in all possible applications.