

## Excellent Integrated System Limited

Stocking Distributor

Click to view price, real time Inventory, Delivery & Lifecycle Information:

[TE Connectivity AMP Connectors](#)  
[1-1478005-0](#)

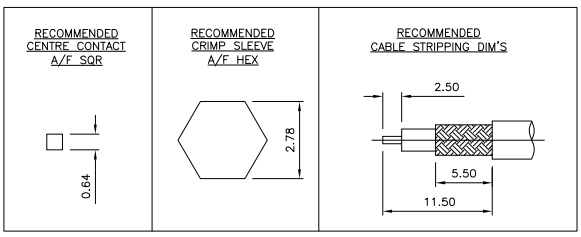
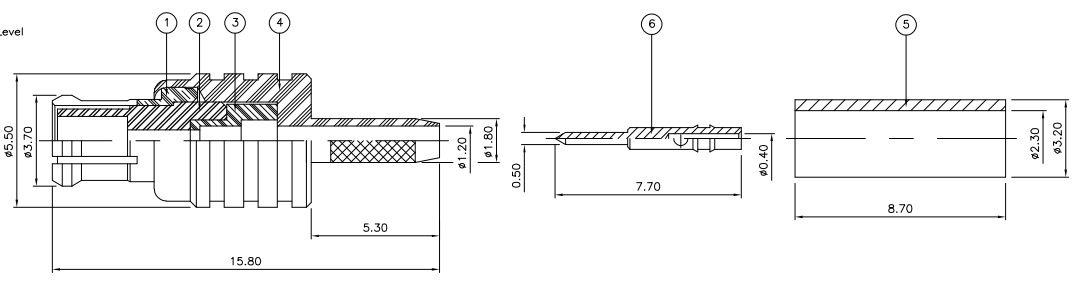
For any questions, you can email us directly:

[sales@integrated-circuit.com](mailto:sales@integrated-circuit.com)

THIS DRAWING IS UNPUBLISHED. RELEASED FOR PUBLICATION JUNE, 2006.  
 © COPYRIGHT 2006 BY TYCO ELECTRONICS CORPORATION. ALL RIGHTS RESERVED.

LOC	DIST	REVISIONS			
P	LTR	DESCRIPTION	DATE	DWN	APVD
E	B				
B		ECR-06-013423	01JUN06	JMS	FWK

- NOTES:**
- 1 PACK IN ACCORDANCE WITH AMP SPEC 107-3275
  - 2 100 TRAY PACK IN ACCORDANCE WITH AMP SPEC 107-3275
  - 3 Au PLATING
  - 4 Ni PLATING
  - 5 HAND TOOL : 9-1478240-0
  - 6 DIE SET : 9-1478248-0
  - 7 **ELECTRICAL CHARACTERISTICS**  
 FREQUENCY RANGE: DC - 6 GHz  
 NOMINAL IMPEDANCE: 50 Ohm  
 INSULATION RESISTANCE: 1000 MOhm  
 WORKING VOLTAGE: 335 Volts RMS at Sea Level  
 DIELECTRIC WITHSTAND VOLTAGE: 1000 Volts RMS Max  
 CONTACT RESISTANCE: 5.00 mOhm Max  
 CENTRE CONTACT: 1.00 mOhm Max  
 OUTER CONTACT: 1.35:1 Max  
 VSWR @ 4GHz: 0.10 Max  
 INSERTION LOSS dB @ x 1.0 GHz: 0.10 Max
  - 8 **MECHANICAL CHARACTERISTICS**  
 COUPLING NUT RETENTION FORCE: N/A  
 CABLE RETENTION FORCE: RG174A/U, 188A/U, 316/U, URM95: 85N Min  
 RG178B/U, 196A/U: 25N Min  
 DURABILITY: 500 Cycles Min
  - 9 **ENVIRONMENTAL CHARACTERISTICS**  
 OPERATING TEMPERATURE: -65 to +165 DegC
  - 10 FOR TECHNICAL DATA REFER TO YOUR LOCAL TYCO ELECTRONICS SALES OFFICE
  - 11 ALL DIMENSIONS ARE NOMINAL FOR REFERENCE ONLY UNLESS OTHERWISE STATED



QTY	PER ASSY	MATERIAL	DESCRIPTION	ITEM
1	1	BRASS	CONTACT	6
1	1	BRASS	FERRULE	5
1	1	BRASS	BODY	4
1	1	POLYPROPYLENE	INSULATION	3
1	1	PTFE	INSULATION	2
1	1	BERYLLIUM COPPER	CHASSIS	1

THIS DRAWING IS A CONTROLLED DOCUMENT.		DWN: J.SANDWELL 01JUN06	Tyco Electronics Corporation	
DIMENSIONS: mm		CHK: S.PARLOW 01JUN06	Biddeford EX39 4HE	
TOLERANCES UNLESS OTHERWISE SPECIFIED:		APVD: F.WHEELER-KING 01JUN06	NAME: MCX STRAIGHT PLUG CRIMP 50 OHM	
0 PLC ± .05		PRODUCT SPEC	RG178B/U, 196A/U, URM110, KX21A	
1 PLC ± .05		APPLICATION SPEC	-	
2 PLC ± .05		411-3247	SIZE: A3	CAGE CODE: 00779
3 PLC ± .05		WEIGHT: -	DRAWING NO: 1478005	RESTRICTED TO: -
4 BPC ± .05		CUSTOMER DRAWING	SCALE: NTS	SHEET: 1 OF 1
ANGLES ± .05				REV: B
FINISH: -				