

Excellent Integrated System Limited

Stocking Distributor

Click to view price, real time Inventory, Delivery & Lifecycle Information:

[TE Connectivity AMP Connectors](#)
[1-1478040-0](#)

For any questions, you can email us directly:

sales@integrated-circuit.com

THIS DRAWING IS UNPUBLISHED. RELEASED FOR PUBLICATION JUNE, 2006.

© COPYRIGHT 2006 BY TYCO ELECTRONICS CORPORATION. ALL RIGHTS RESERVED.

LOC	DIST	REVISIONS			
P	LTR	DESCRIPTION	DATE	DWN	APVD
E	B	B	ECR-06-013423	13JUN06	JMS FWK

NOTES:

- 1. PACK IN ACCORDANCE WITH AMP SPEC 107-3275
- 2. 100 TRAY PACK IN ACCORDANCE WITH AMP SPEC 107-3275
- 3. Au PLATING
- 4. Ni PLATING

5 ELECTRICAL CHARACTERISTICS

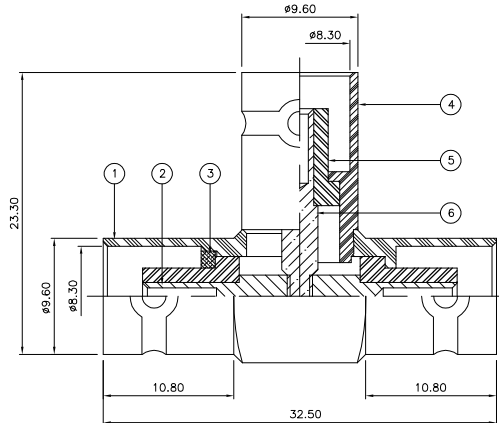
FREQUENCY RANGE:	DC - 4 GHz
NOMINAL IMPEDANCE:	50 Ohm
INSULATION RESISTANCE:	5000 MOhm
WORKING VOLTAGE:	500 Volts RMS at Sea Level
DIELECTRIC WITHSTAND VOLTAGE:	1500 Volts RMS Max
CONTACT RESISTANCE:	1.50 mOhm Max
CENTRE CONTACT:	N/A
OUTER CONTACT:	0.20 mOhm Max
VSWR @ xGHz:	N/A
INSERTION LOSS xdb:	N/A

6 MECHANICAL CHARACTERISTICS

COUPLING RETENTION FORCE:	N/A
CABLE RETENTION FORCE:	N/A
DURABILITY:	500 Cycles Min

7 ENVIRONMENTAL CHARACTERISTICS
OPERATING TEMPERATURE: -65 to +165 DegC

- 8 FOR TECHNICAL DATA REFER TO YOUR LOCAL TYCO ELECTRONICS SALES OFFICE
- 9 ALL DIMENSIONS ARE NOMINAL FOR REFERENCE ONLY UNLESS OTHERWISE STATED



QTY	1	1	MATERIAL	DESCRIPTION	ITEM
	1	1	BRASS	CONTACT II	6
	3	3	PTFE	INSULATION	5
	1	1	BRASS	BODY 2	4
	1	1	BRASS	WASHER	3
	1	1	BRASS	CONTACT I	2
	1	1	BRASS	BODY 1	1
	6-0	1-0	MATERIAL	DESCRIPTION	ITEM

THIS DRAWING IS A CONTROLLED DOCUMENT.		DWN: J.SANDWELL 13JUN06	Tyco Electronics Corporation Bideford EX39 4HE		
DIMENSIONS: mm		CHK: S.PARLOW 13JUN06			
		APVD: F.WHEELER-KING 13JUN06	NAME: BNC TEE ADAPTOR J-J-J 50 OHM		
MATERIAL: SEE TABLE		PRODUCT SPEC: -	APPLICATION SPEC: -		
FINISH: -		WEIGHT: -	SIZE: A3	CAGE CODE: 00779	DRAWING NO: 1478040
		CUSTOMER DRAWING	SCALE: NTS	SHEET: 1 OF 1	REV: B