

Excellent Integrated System Limited

Stocking Distributor

Click to view price, real time Inventory, Delivery & Lifecycle Information:

[TE Connectivity AMP Connectors](#)
[225689-2](#)

For any questions, you can email us directly:

sales@integrated-circuit.com

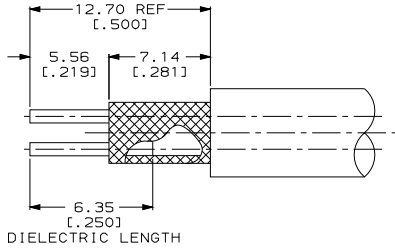


DRAWING MADE IN THIRD ANGLE PROJECTION

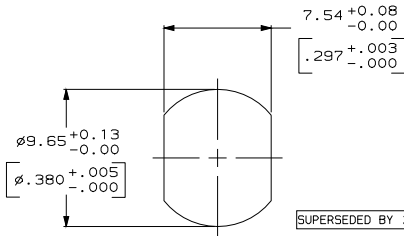
THIS DRAWING IS UNPUBLISHED. RELEASED FOR PUBLICATION. 19
 © COPYRIGHT 19 BY AMP INCORPORATED. ALL INTERNATIONAL RIGHTS RESERVED.

LOC	DIST	P	F	ZONE	LTR	REVISIONS	DATE	APPD
DF	X0					G REV PER 0H14-0112-04 CT	1-14-05	DE

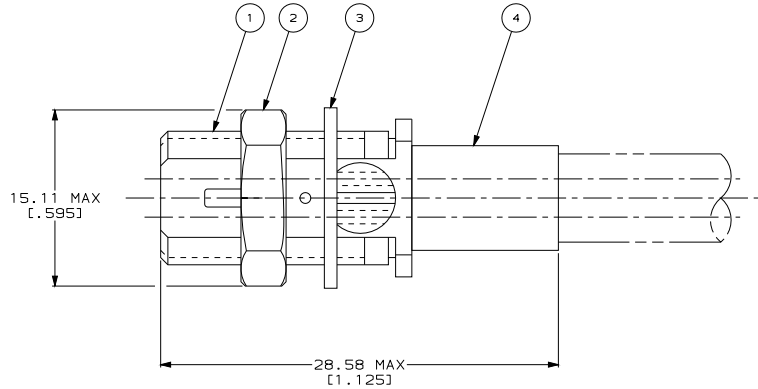
1. PARTS PACKAGED UNASSEMBLED
2. 6.35 [0.250] MAXIMUM PANEL THICKNESS
3. CRIMP TOOL: 69311-1
4. SEE I.S. 1833



RECOMMENDED STRIP LENGTH



RECOMMENDED PANEL CUTOUT



SUPERSEDED BY 2-329941-3	BELDEN 8451,8641 & 8761	329056	1-329492-1	1-330249-1	2-330245-4	225689-4
	RG-108/U,108A/U AND BELDEN 8759	1-329960-1	1-329492-1	1-330249-1	2-330245-3	225689-2
SUPERSEDED BY 2-329941-1	BELDEN 8737	1-329960-1	1-329492-1	1-330249-1	2-330245-4	225689-1
	CABLE SIZE	④ FERRULE QTY=1	③ LOCKWASHER QTY=1	② NUT QTY=1	① RECEPTACLE ASSEMBLY QTY=1	PART NUMBER

PART NO	
DO NOT SCALE PRINT. UNLESS SPECIFIED DIMENSIONS IN mm [INCHES] TOLERANCES ON: 2 PLC DEC ± 0.41 [0.016] 3 PLC DEC ± - ANGLES ± -	DR 06-25-91 B.SCOTT CHK 02/05/93 G.MICHAEL APPD 02/05/93 G.MICHAEL APPD 02/05/93 J.DAVIS PRODUCT SPEC - FINISH - WEIGHT -
AMP AMP Incorporated Harrisburg, PA 17105-3608	NAME RECEPTACLE, THREADED, TWIN SERIES
SIZE CAGE CODE DRAWING NO 00779 225689	SCALE SHEET 5:1 1 OF 1