



## **Excellent Integrated System Limited**

Stocking Distributor

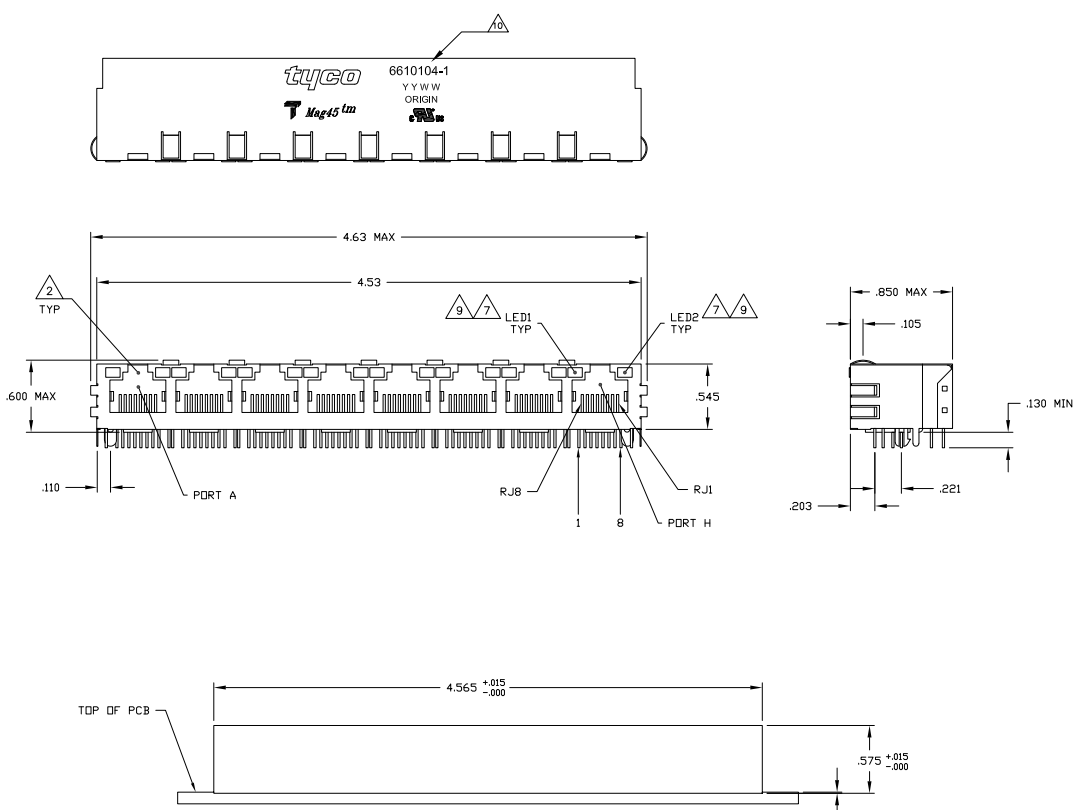
Click to view price, real time Inventory, Delivery & Lifecycle Information:

[TE Connectivity AMP Connectors](#)  
[1-6610104-1](#)

For any questions, you can email us directly:

[sales@integrated-circuit.com](mailto:sales@integrated-circuit.com)

MECHANICAL:



- △ MATERIALS:
  - HOUSING - THERMOPLASTIC PET PESTER FLAMMABILITY RATING UL 94V-0
  - SHIELD - .010" THICK, C26800 BRASS PREPLATED WITH 30μINCH MIN SEMI-BRIGHT NICKEL, SOLDER TABS POST DIPPED WITH 100μINCH MIN SAC SOLDER
  - MOD JACK CONTACTS - 0.0013" X 0.008" PHOSPHOR BRONZE, 50μINCH MIN OVERALL NICKEL UNDERPLATE WITH SELECT 50μINCH MIN HARD GOLD FINISH PLATE
  - SOLDER TAILS WITH 100μINCH MIN MATTIE TIN AND/OR SAC SOLDER DIP
  - LIGHT EMITTING DIODE(LED) - DIFFUSED EPOXY LENS, .020" X .020" CARBON STEEL WIREFRAME LEADS PRE-PLATED WITH 80μINCH SILVER OVER 40μINCH NICKEL UNDERPLATE OVER 40μINCH COPPER UNDERPLATE, POST-PLATED WITH 100μINCH MIN MATTIE TIN AND/OR SAC SOLDER DIP OR PURE TIN SOLDER DIP
- △ RJ45 JACK CAVITY CONFORMS TO FCC RULES AND REGULATIONS PART 68, SUB PART F.
- △ MAGNETICS
  - IMPEDANCE: 100 OHMS
  - TURNS RATIO (CHIP-CABLE): TX = 11, RX = 11
  - OPEN CIRCUIT INDUCTANCE (OCIL) 350pH MIN @100MHz, 0.1VRMS, 8mADC BIAS FROM 0°C TO 70°C, TX AND RX
  - PERFORMANCE @ 25°C
    - INSERTION LOSS (IL): 1.0dB MAX FROM 0.5MHz TO 100MHz
    - RETURN LOSS (RL): 18dB MIN FROM 0.5MHz TO 30MHz
    - 18-20LOG(f/30dB) MIN FROM 30 MHz TO 60MHz
    - 12dB MIN FROM 60 MHz TO 80MHz
    - CROSSTALK ATTENUATION: 35dB MIN FROM 0.5MHz TO 40MHz
    - 33-20\*LOG(f/50dB) MIN FROM 40 MHz TO 100MHz
    - COMMON MODE REJECTION RATIO (CMRR): 30dB MIN FROM 0.5MHz TO 100MHz
    - ISOLATION VOLTAGE: COMPLIES WITH IEEE802.3 2002, PARA 23.5.1.1, ITEM a or b.
- △ C1 IS AN OPTIONAL 1000pF, 2kV DECOUPLING CAPACITOR. IF NO CAPACITOR, TRACE IS CONTINUOUS. SEE TABLE FOR PRESENCE OF CAPACITOR IN DIFFERENT CONFIGURATIONS.
- 5. OPERATING TEMPERATURE: FROM 0°C TO -70°C.
- △ R1-R4 = 75 OHMS, 1/16 W, 5% RESISTORS.
- △ LED COMPLIANT WITH IEC60825-1 SAFETY OF LASER PRODUCTS. WHEN OPERATED UP TO 20 mA. THE 250 OHM RESISTOR IS INCLUDED EXCEPT ON BICOLOR LED.
- △ INDICATED CONNECTIONS ARE FOR HUB CONFIGURATION. THE MAGNETICS ARE ASYMMETRICAL, AND DO NOT SUPPORT AUTO-MDM/MDX.
- △ LED PEAK WAVELENGTH: GREEN(λ) = 565nm  
YELLOW(λ) = 585nm
- △ TRADEMARK, PART NUMBER, DATE CODE, COUNTRY OF ORIGIN AND AGENCY APPROVAL MARKING IN APPROXIMATE LOCATION SHOWN.

YES	GREEN	GREEN	6-6610104-1
YES	GREEN/YELLOW	GREEN	5-6610104-4
YES	GREEN	YELLOW	5-6610104-1
NO	GREEN	GREEN	1-6610104-1
NO	GREEN	YELLOW	6610104-1

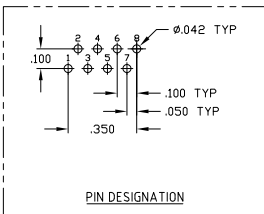
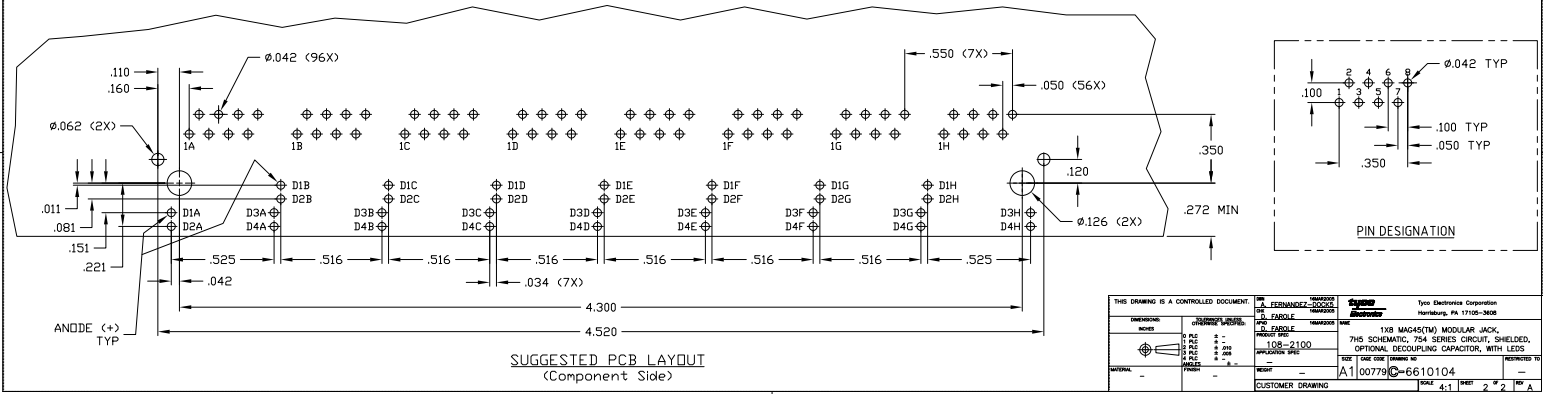
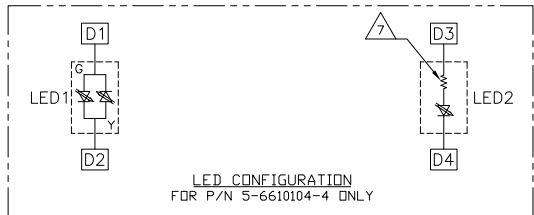
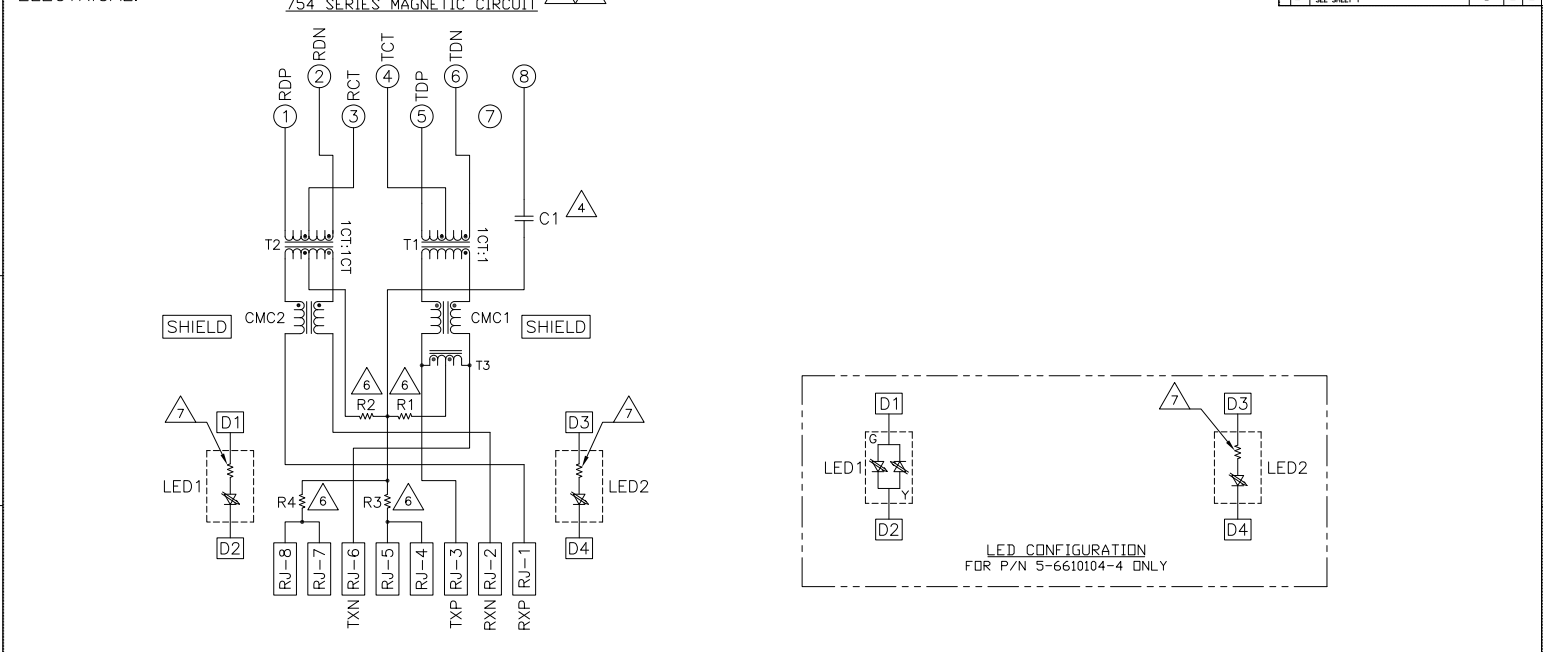
  

DECOUPLING CAPACITOR	LED1	LED2	PART NUMBER
YES	△	△	
NO			

THIS DRAWING IS A CONTROLLED DOCUMENT	REV 0013-0450-04	DATE	04/13/04	TYPE	Customer
DESCRIPTION	1X8 MAG45(TM) MODULAR JACK, 7HS SCHEMATIC, 754 SERIES CIRCUIT, SHIELDED, OPTIONAL DECOUPLING CAPACITOR, WITH LEAD	SIZE	A1	USE SIZE	FROM 10
REV	0013-0450-04	DATE	04/13/04	TYPE	Customer
REV	0013-0450-04	DATE	04/13/04	TYPE	Customer

REV	DATE	BY	CHK	DESCRIPTION
AA	22			REVISIONS
				SEE SHEET 1



THIS DRAWING IS A CONTROLLED DOCUMENT		<table border="1"> <tr> <th>REV</th> <th>DATE</th> <th>BY</th> <th>CHK</th> <th>DESCRIPTION</th> </tr> <tr> <td>AA</td> <td>22</td> <td></td> <td></td> <td>REVISIONS</td> </tr> </table>		REV	DATE	BY	CHK	DESCRIPTION	AA	22			REVISIONS	Type Electronics Corporation Harrisburg, PA 17105-3608	
REV	DATE	BY	CHK	DESCRIPTION											
AA	22			REVISIONS											
PREPARED BY: [ ] CHECKED BY: [ ] DATE: [ ] SCALE: [ ]	DRAWN BY: [ ] CHECKED BY: [ ] DATE: [ ] SCALE: [ ]	PART NO: 1-6610104-1 REV: 1-08-2100 QTY: 1000000	PART NO: 1-6610104-1 REV: 1-08-2100 QTY: 1000000	1X8 MAGJACK(TM) MODULAR JACK, THIS SCHEMATIC, 754 SERIES CIRCUIT, SHIELDED, OPTIONAL, SCROUING CAPACITOR, WITH LEADS	SIZE: [ ] USE SIZE: [ ] PART NO: [ ] REV: [ ] QTY: [ ]										
CUSTOMER DRAWING		A1		00779-6610104											