

Excellent Integrated System Limited

Stocking Distributor

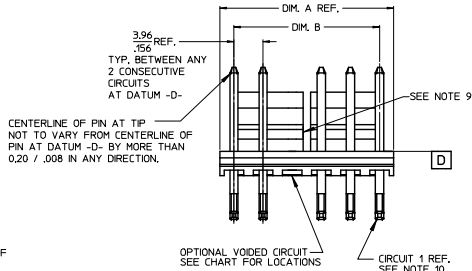
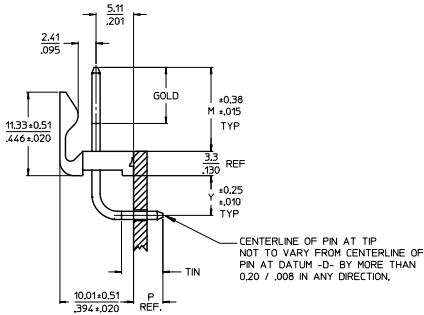
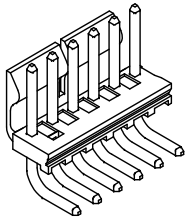
Click to view price, real time Inventory, Delivery & Lifecycle Information:

[Molex Connector Corporation](#)
[0026605050](#)

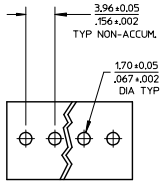
For any questions, you can email us directly:

sales@integrated-circuit.com

10 9 8 7 6 5 4 3 2 1



CKT	DIM. A	DIM. B	SLOT LOC BETWEEN CKTS
2	7.77 .306	3.96+0.05 .156+0.002	NONE
3	11.73 .462	7.92+0.08 .312+0.003	NONE
4	15.70 .618	11.89+0.08 .468+0.003	NONE
5	19.66 .774	15.85+0.10 .624+0.004	NONE
6	23.62 .930	19.81+0.10 .780+0.004	3 & 4
7	27.58 1.086	23.77+0.10 .936+0.004	4 & 5
8	31.55 1.242	27.74+0.13 1.092+0.005	4 & 5
9	35.51 1.398	31.70+0.13 1.248+0.005	5 & 6
10	39.47 1.554	35.66+0.13 1.404+0.005	5 & 6
11	43.43 1.710	39.62+0.15 1.560+0.006	6 & 7
12	47.40 1.866	43.59+0.15 1.716+0.006	4 & 5 8 & 9
13	51.36 2.022	47.59+0.15 1.872+0.006	4 & 5 9 & 10
14	55.32 2.178	51.5+0.18 2.028+0.007	5 & 6 9 & 10
15	59.28 2.334	55.47+0.18 2.184+0.007	5 & 6 10 & 11
16	63.25 2.490	59.44+0.18 2.340+0.007	5 & 6 11 & 12
17	67.21 2.646	63.40+0.20 2.496+0.008	6 & 7 11 & 12
18	71.17 2.802	67.36+0.20 2.652+0.008	6 & 7 12 & 13



PCB LAYOUT: COMPONENT SIDE

NOTES:

- MATERIAL: HEADER-GLASS FILLED POLYESTER, 94V-0, MOLDED NATURAL (WHITE).
- FINISH: (197) OVERALL REFLOWED MATTE TIN: 0.00152/0.00060 MIN. OVER 0.00127/0.00050 MIN. NICKEL OVERALL. (154) OVERALL TIN: .00254/0.000100 MIN OVER .00127/0.000050 MIN NICKEL. (208) SELECT GOLD: .00038/0.000015 MIN, SELECT TIN: .00254/0.000100 MIN. OVERALL NICKEL UNDERPLATE: .00127/0.00050 MIN. (228) SELECT GOLD: .00076/0.000030 MIN, SELECT TIN: .00254/0.000100 MIN. OVERALL NICKEL UNDERPLATE: .00127/0.00050 MIN. (241) SELECT GOLD: 0.00051/0.000020 MIN. SELECT TIN: 0.00254/0.000100 MIN. OVERALL NICKEL UNDERPLATE: 0.00127/0.00050 MIN. FOR ADDITIONAL PLATING INFO, SEE SDES-88.
- PRODUCT SPECIFICATION AND PROCESS PARAMETERS: SEE PS-08-50.
- PACKAGING INFORMATION: SEE CHART
- SOLDERABILITY: PER SMES-152.
- PIN PUSH-OUT FORCE: PRIOR TO SOLDERING, A 3 LB. MINIMUM FORCE (IN EITHER DIRECTION)
- PARTS ARE STACKABLE END TO END ON 3.96/.156 CENTERS.
- THIS PART CONFORMS TO CLASS B REQUIREMENTS OF COSMETIC SPECIFICATION PS-45499-002.
- SLOTS ON BACKWALL ARE BETWEEN CIRCUITS. SEE CHART FOR LOCATION.
- CIRCUIT 1 DESIGNATION IS USED TO DEFINE VOID LOCATION. CIRCUIT 1 MAY OR MAY NOT LINE UP WITH CIRCUIT 1 ON THE MATING HOUSING.

QUALITY SYMBOLS	GENERAL TOLERANCES (UNLESS SPECIFIED)		MM/IN	DATE	TITLE	SCALE	DESIGN UNITS	THIRD ANGLE PROJECTION
	mm	INCH	DRAWN BY	DATE				
$\nabla=0$	4 PLACES ± .010	± .010	JSCHAFAER	11-07-03	KK .156 HEADER ASSEMBLY FRICTION LOCK RIGHT ANGLE W/O PEGS	2:1	INCH	
$\nabla=0$	3 PLACES ± .025	± .015	CHECKED BY	DATE				
$\nabla=0$	2 PLACES ± .038	± .020	APPROVED BY	DATE				
	1 PLACE ± .050	± .030	MARGULIS	11-17-03				
	0 PLACE ± .075	± .040						
	ANGULAR ±1/2°		MATERIAL NO.		DOCUMENT NO.		SHEET NO.	
	DRAFT WHERE APPLICABLE MUST REMAIN WITHIN DIMENSIONS		SEE CHART		SDA-41792		1 OF *	
	THIS DRAWING CONTAINS INFORMATION THAT IS PROPRIETARY TO MOLEX INCORPORATED AND SHOULD NOT BE USED WITHOUT WRITTEN PERMISSION							

2-	K3
1	K3
SHT	REV

ADD 41792-0698	2015/02/03
EC NO: JCP2015-3140	2015/02/03
DRW: KW/PPR	2015/02/03
CHK: KONGUEN	2015/02/03
APP: P/SMITH	2015/02/16
REV	DESCRIPTION

9 8 7 6 5 4 3 2 1