



Distributor of TE Connectivity AMP Connectors: Excellent Integrated System Limited
Datasheet of 745352-4 - D-Sub Connector Plug, Male Pins 15 Position Through Hole, Right
Angle Solder

Contact us: sales@integrated-circuit.com Website: www.integrated-circuit.com

Excellent Integrated System Limited

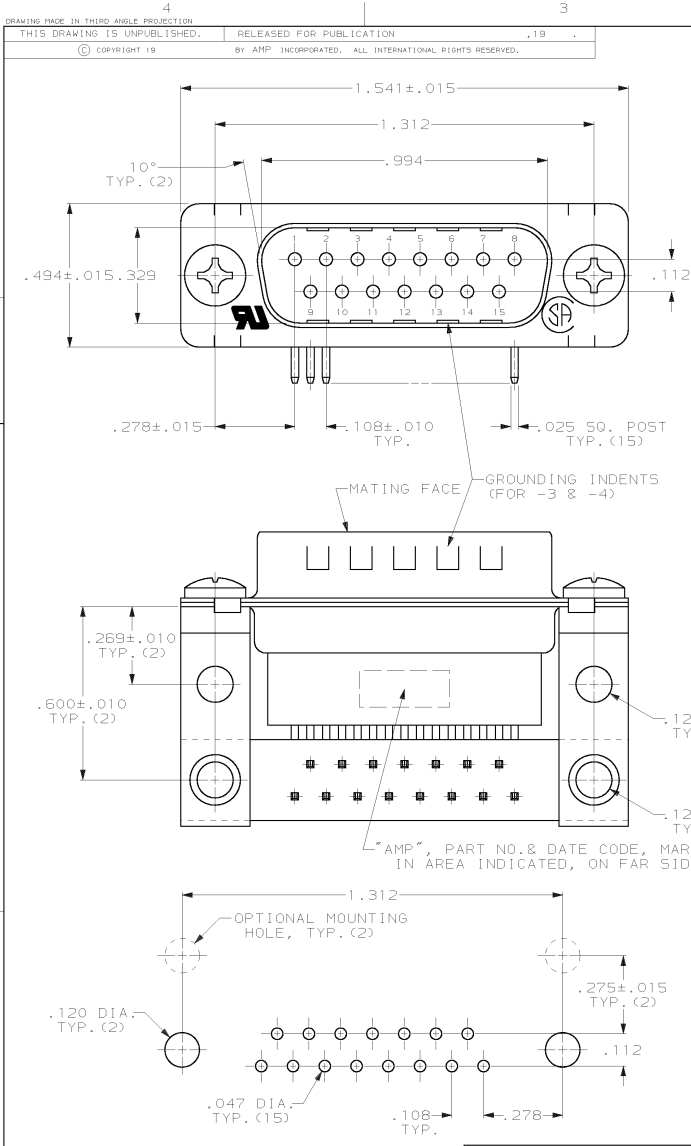
Stocking Distributor

Click to view price, real time Inventory, Delivery & Lifecycle Information:

[TE Connectivity AMP Connectors](#)
[745352-4](#)

For any questions, you can email us directly:

sales@integrated-circuit.com



LRC		0101		P		ZONE		LTP		REVISIONS		DATE	APPD.
GP	00	P	P							DESCRIPTION			
										E	REV PER ECN B03132	05/09/99	-
										F	OBS -2 PER EC 0020-831-93	03/16/94	SB
										G	REV PER EC 0640-429-98	10 MAR 99	RT
										H	REV PER EC 001D-0275-00	03JAN02	JR

- CONNECTOR MATES WITH ANY 15 POS. RECEPTACLE IN AMPLIMITE SERIES & COMPLIES WITH AMP SPEC. 108-40,005 WHERE APPLICABLE.
- FLAME RETARDANT 94V-0 RATED THERMOPLASTIC; COLOR: BLACK.
- STEEL PER ASTM A109.
- BRASS PER MIL-C-50.
- TIN PLATING PER MIL-T-10727, GOLD PLATING PER MIL-G-45204, NICKEL PLATING PER 00-N-290.
- TIN PLATED.
- GOLD PLATED FOR LENGTH OF .150 MIN FROM MATING END, GOLD FLASH IN MATED AREA, .000100 MIN TIN-LEAD ON OPPOSITE END, BOTH OVER .000050 MIN NICKEL.
- GOLD PLATED FOR LENGTH OF .150 MIN FROM MATING END, .000030 MIN GOLD IN MATED AREA, .000100 MIN TIN-LEAD ON OPPOSITE END, BOTH OVER .000050 MIN NICKEL.

DO NOT SCALE PRINT. UNLESS SPECIFIED DIMENSIONS IN INCHES TOLERANCES ON:		DR 12-27-83 J.GERACE	AMP Incorporated Harrisburg, PA 17105-3608	
2 PLC DEC ±	.005	CHK 12-27-83 J.GERACE	NAME AMP PLUG ASSEMBLY, SIZE 2, 15 POSN, RIGHT ANGLE, .545 SERIES, .025 SQ. POSTS, AMPLIMITE™ HDP	
3 PLC DEC ±	.005	APPO 03-15-84 P. SHELIGARD		
ANGLES	# 2*	APPO 03-15-84 J. ASSINI	SIZE CAGE CODE DRAWING NO C 00779 C=745352	
FINISH	△	PRODUCT SPEC	SCALE - SHEET 1 OF 1	
SHELLS & BRACKETS:	△	APPLICATION SPEC	CUSTOMER DRAWING	
CONTACTS:	△	WEIGHT -		