

Excellent Integrated System Limited

Stocking Distributor

Click to view price, real time Inventory, Delivery & Lifecycle Information:

[Molex Connector Corporation](#)

[84501-0001](#)

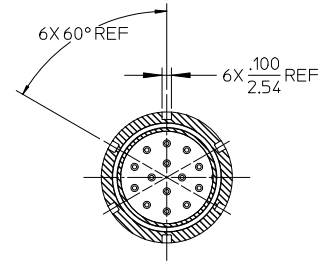
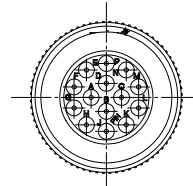
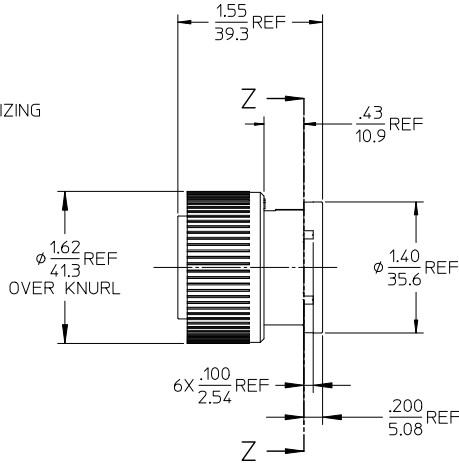
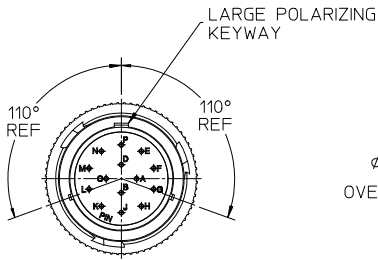
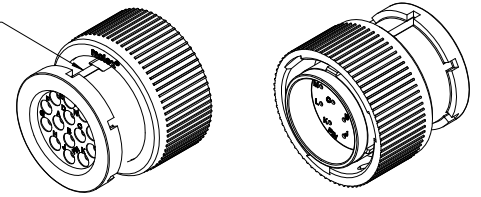
For any questions, you can email us directly:

sales@integrated-circuit.com

10	9	8	7	6	5	4	3	2	84501
----	---	---	---	---	---	---	---	---	-------

MATERIAL NUMBER	WIRE AWG	INSUL DIA O.D.
845010001	18-14	.053(1.35) - .134(3.40)

LARGE POLARIZING KEY INDICATOR



- NOTES:
- MATERIALS:
HOUSINGS: POLYESTER (PBT), GLASS FILLED, UL94V-0 & POLYETHERIMIDE (PEI), UNFILLED, UL94V-0.
COLOR, UNLESS OTHERWISE SPECIFIED: BLACK
SEALS: SILICONE RUBBER
COLOR: RUST RED
 - PRODUCT SPECIFICATION: PS-84501-001.
 - MATES WITH: SERIES 84508 RECEPTACLE CONNECTOR.
 - USE CONNECTOR WITH MALE CRIMP TERMINAL SERIES 84524.
 - ALL COMPONENTS ARE ROHS COMPLIANT.

UPDATE NOTE TO 84524 TERMS. EC NO: WNA 2011-0402 DRAWING NO: 2011/01/28 CHKD: DRW/ML/ENG APPR: DIT/JUS 2011/02/03	QUALITY SYMBOLS	GENERAL TOLERANCES (UNLESS SPECIFIED)	DIMENSION STYLE	SCALE	DESIGN UNITS	THIRD ANGLE PROJECTION															
	$\nabla=0$ $\nabla=0$	<table border="1"> <tr> <th></th> <th>mm</th> <th>INCH</th> </tr> <tr> <td>4 PLACES</td> <td>± .15</td> <td>± .005</td> </tr> <tr> <td>3 PLACES</td> <td>± .10</td> <td>± .004</td> </tr> <tr> <td>2 PLACES</td> <td>± 0.38</td> <td>± .02</td> </tr> <tr> <td>1 PLACE</td> <td>± 0.5</td> <td>± .02</td> </tr> </table>		mm	INCH	4 PLACES	± .15	± .005	3 PLACES	± .10	± .004	2 PLACES	± 0.38	± .02	1 PLACE	± 0.5	± .02	IN/MM	1:1	INCH	
		mm	INCH																		
	4 PLACES	± .15	± .005																		
3 PLACES	± .10	± .004																			
2 PLACES	± 0.38	± .02																			
1 PLACE	± 0.5	± .02																			
	ANGULAR ± 1°	DRAWN BY: DMYRICK CHECKED BY: JPAWLICKI APPROVED BY: RDEROSS DATE: 2006/2/8	TITLE	PLUG CONNECTOR ASSEMBLY, 18-14 POS PIN TERMINALS																	
	DRAFT WHERE APPLICABLE MUST REMAIN WITHIN DIMENSIONS	SEE CHART	MATERIAL NO. DOCUMENT NO.	MOLEX INCORPORATED SD-84501-001																	

9	8	7	6	5	4	3	2	1
---	---	---	---	---	---	---	---	---