

Excellent Integrated System Limited

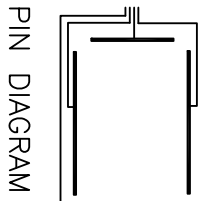
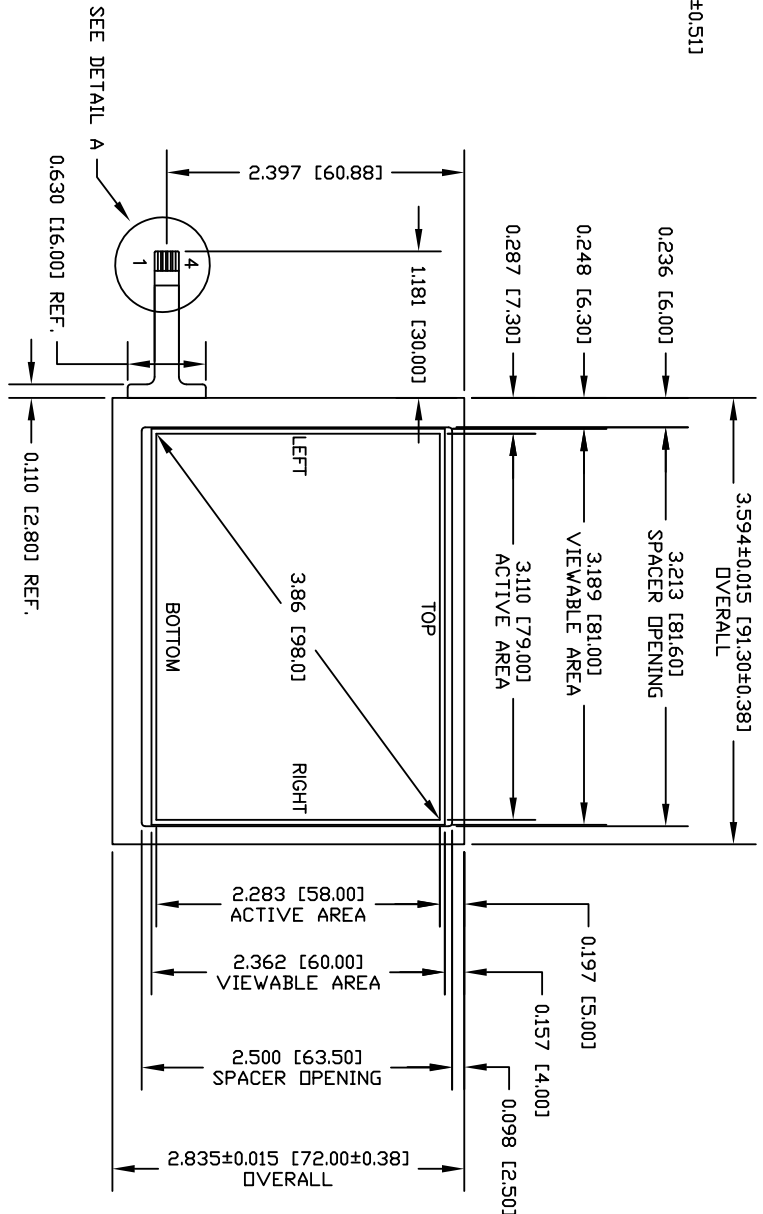
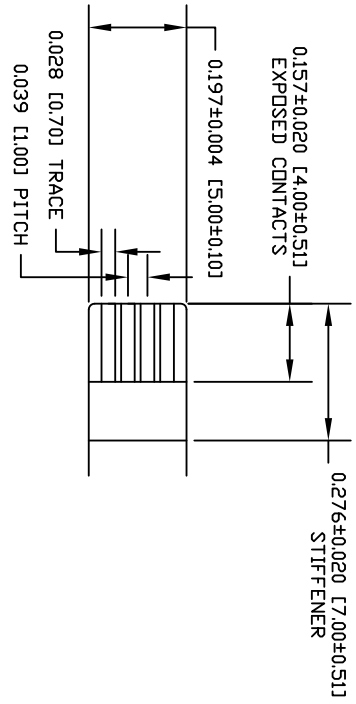
Stocking Distributor

Click to view price, real time Inventory, Delivery & Lifecycle Information:

[Bergquist](#)
[400425](#)

For any questions, you can email us directly:

sales@integrated-circuit.com



NOTES:

1. TOLERANCE ±.020 UNLESS NOTED OTHERWISE.
2. TOP CONDUCTIVE LAYER TO HAVE AN CLEAR HARDCOATED SURFACE.
3. PIN ONE IS DESIGNATED BY THE NUMERICAL NUMBER 1 BY THE CONNECTOR END.
4. PINOUT TO BE AS INDICATED.
PIN 1 - RIGHT,
PIN 2 - BOTTOM,
PIN 3 - LEFT,
PIN 4 - TOP.
5. TAIL TYPE: IMMERSION GOLD PLATED PFC, ZIF

REV	INITIALS	DATE	DESCRIPTION

BERGQUIST TOUCH PRODUCTS			
386 DIAGONAL 4-WIRE			
301 WASHINGTON STREET CANNON FALLS, MN 55505			
DRN:	MLR	DATE:	TDL 40.020 DWG # 9505C
CHKD:		DATE:	
APRVD:		DATE:	
			PART # 400425 REV