

## **Excellent Integrated System Limited**

Stocking Distributor

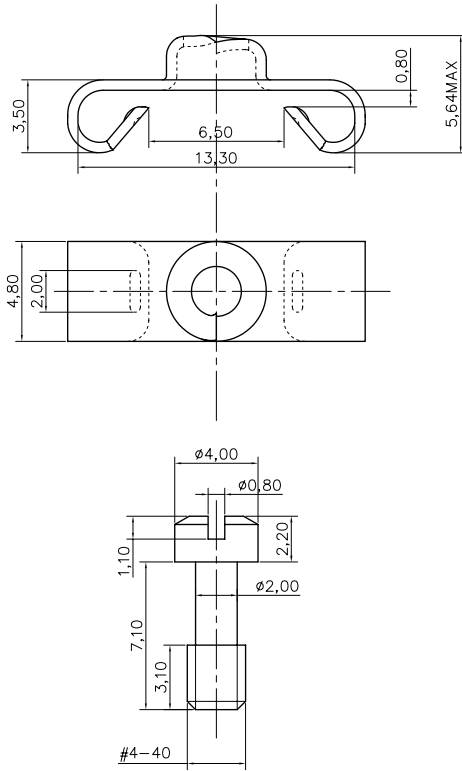
Click to view price, real time Inventory, Delivery & Lifecycle Information:

[Amphenol Commercial Products](#)  
[L17D20419X](#)

For any questions, you can email us directly:

[sales@integrated-circuit.com](mailto:sales@integrated-circuit.com)

This document is the property of Amphenol Corporation and is delivered on the express condition that it is not to be disclosed, reproduced or used, in whole or in part, for manufacture or sale by anyone other than Amphenol Corporation without its prior consent. No right is granted to disclose or to use any information in this document.



**Customer drawing**

REVISIONS				
SYM	ECN	DESCRIPTION	DATE	APPROVED
1			02/25/08	

**D-SUB TECHNICAL DATA**

MATERIAL : Steel 100u" min tin over 50u" min nickel

PACKAGE : Delivered separately

1 P/N : 10 sets

MARKING : Amphenol...(Series No.)

Commercial reference

Manufacturing date

**PRODUCT CODE**

**L 17D20419X**

L: RoHS Compliance

X: 10 sets

UNLESS OTHERWISE SPECIFIED		APPROVAL	DATE	Amphenol®
TOLERANCES		DRAWN: SamuLJ	02/25/08	
	U.S.	CHECKED: Hk.wong	02/25/08	TITLE Lock Accessory
	METRIC			
X	+/-			DRAWING FILE :
X.0	+/-			
X.00	+/-			DRAWING FILE :
X.000	+/-			
FRACTIONS +/-				SIZE: A4
ANGLES +/-				
REMOVE SHARP EDGES		ANGLE OF PROJECTION		DRAWING NO. C L17D20419X
DIMENSIONS		FIRST ANGLE		
U.S. INCHES		FIRST ANGLE		REV. 1
METRIC MM		FIRST ANGLE		
SCALE NONE		SHEET 1 OF 1		