

Excellent Integrated System Limited

Stocking Distributor

Click to view price, real time Inventory, Delivery & Lifecycle Information:

[Amphenol Commercial Products](#)

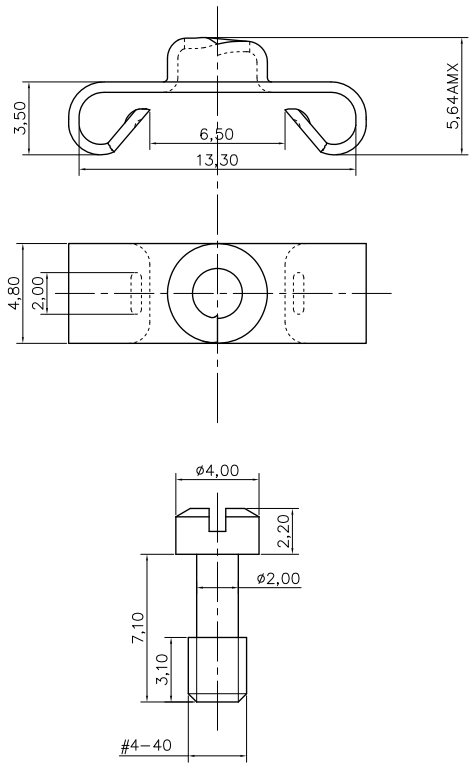
[L17D20419EX](#)

For any questions, you can email us directly:

sales@integrated-circuit.com

This document is the property of Amphenol Corporation and is delivered on the express condition that it is not to be disclosed, reproduced or used, in whole or in part, for manufacture or sale by anyone other than Amphenol Corporation without its prior consent, & that no right is granted to disclose or to use any information in this document.

D
C
B
A



Customer drawing



REVISIONS				
SYM	ECN	DESCRIPTION	DATE	APPROVED
1			Mar/04/11	

D-SUB TECHNICAL DATA

MATERIAL : Steel 100u" min tin over 50u" min nickel
 PACKAGE : Delivered separately
 1 P/N : 10 sets
 MARKING : Amphenol---(Series No.)
 Commercial reference
 Manufacturing date

PRODUCT CODE

L 17D20419EX

L: RoHS Compliance

X: 10 sets

UNLESS OTHERWISE SPECIFIED		APPROVAL		DATE		Amphenol Amphenol East Asia Limited	
TOLERANCES		DRAWN		Mar/04/11			
U.S.		METRIC		CHECKED		TITLE	
X +/-		0.50		H.K. wang		Lock Accessory	
XX +/-		0.30		Mar/04/11		SIZE DRAWING NO.	
XXX +/-		0.20				A4 C L17D20419EX	
FRACTIONS +/-		2'		DRAWING FILE :		REV.	
ANGLES +/-		2'				1	
FOR MATERIALS AND FINISHES		REMOVE SHARP EDGES		ANGLE OF PROJECTION		SCALE	
SEE NOTES						NONE	
DIMENSIONS		U.S.		INCHES		SHEET 1 OF 1	
		METRIC		MM			