

Excellent Integrated System Limited

Stocking Distributor

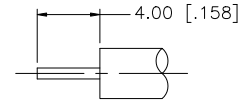
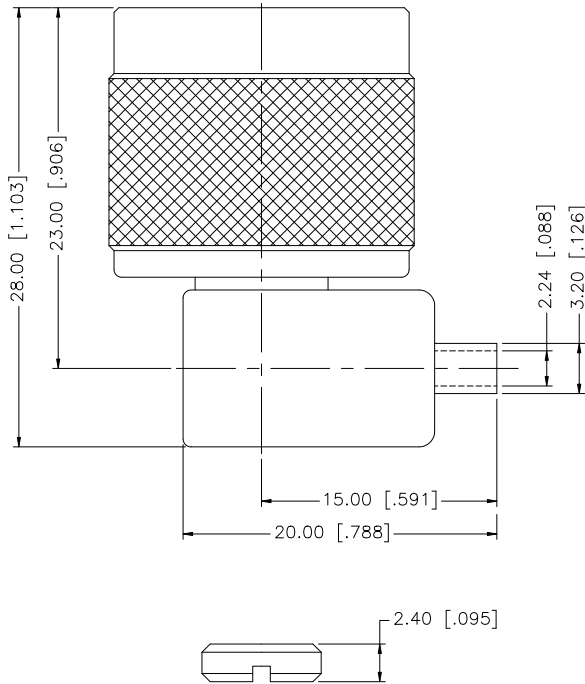
Click to view price, real time Inventory, Delivery & Lifecycle Information:

[Amphenol RF](#)
[172235](#)

For any questions, you can email us directly:

sales@integrated-circuit.com

REV.	DATE	DESCRIPTION
NC	03/23/99	INITIAL RELEASE
A	05/22/07	UPDATE DRAWING FORMAT
B	09/20/07	REVISE BODY PLATING TO NEXCOTE



RECOMMENDED
CABLE STRIPPING DIM'S

				UNLESS OTHERWISE SPECIFIED DIMENSIONS ARE IN MILLIMETERS; DIMENSIONS IN () ARE IN INCHES AND FOR CUSTOMER REFERENCE ONLY.	APPROVALS	DATE	<h1 style="color: blue;">Amphenol Connex</h1>	
8				UNLESS OTHERWISE SPECIFIED TOLERANCES FOR MILLIMETERS ARE: 0.5 - 8mm ± 0.20mm 8 - 30mm ± 0.40mm 30 - 120mm ± 0.50mm UNLESS OTHERWISE SPECIFIED TOLERANCES FOR INCHES ARE: .020 - .315 = ± 0.007" .315 - 1.180 = ± 0.015" 1.180 - 4.724 = ± 0.020" DO NOT SCALE DRAWING	DRAWN	G.R.S.		09/20/07
7					CHECKED			
6					ISSUED			
5					SHEET	1 OF 1		
4	BARREL	BRASS	GOLD	1	PART DESCRIPTION			
3	CONTACT PIN	BRASS	GOLD	1	N R/A DIRECT SOLDER PLUG (FOR .085", .086" SEMI RIGID CABLE)			
2	INSULATOR	TEFLON	NATURAL	1	PART NO.			
1	BODY	BRASS	NEXCOTE	1	172235			
	DESCRIPTION	MATERIAL	FINISH	QTY	CAD FILE	C:/172/172235.DWG	DWG. NO. 172235.DWG	
					REV.	B	SIZE A	SCALE NA