

Excellent Integrated System Limited

Stocking Distributor

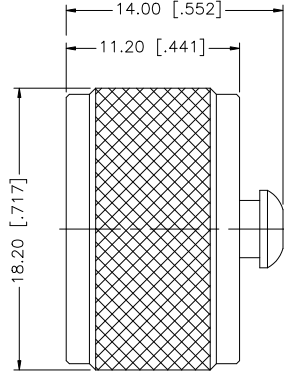
Click to view price, real time Inventory, Delivery & Lifecycle Information:

[Amphenol RF](#)
[202102-10](#)

For any questions, you can email us directly:

sales@integrated-circuit.com

REV.	DATE	ECR NO.	DESCRIPTION
NC	06/07/99	-	INITIAL RELEASE
A	06/29/08	-	UPDATE DRAWING FORMAT



				UNLESS OTHERWISE SPECIFIED DIMENSIONS ARE IN MILLIMETERS; DIMENSIONS IN [] ARE IN INCHES AND FOR CUSTOMER REFERENCE ONLY.	APPROVALS	DATE	Amphenol Connex					
8				UNLESS OTHERWISE SPECIFIED TOLERANCES FOR MILLIMETERS ARE: 0.5 - 8mm ± 0.20mm 8 - 30mm ± 0.40mm 30 - 120mm ± 0.50mm UNLESS OTHERWISE SPECIFIED TOLERANCES FOR INCHES ARE: .020 - .315 = ± 0.007" .315 - 1.180 = ± 0.015" 1.180 - 4.724 = ± 0.020" DO NOT SCALE DRAWING	DRAWN	GRS				06/29/08	PART DESCRIPTION N MALE CAP - NO CHAIN	
7					CHECKED							
6					ISSUED							
5					SHEET	1 OF 1						
4				CAD FILE			PART NO. 202102-10					
3	RIVET	BRASS	NICKEL	1	C:/202/202102-10.DWG			DWG. NO.	202102-10.DWG	REV. A	SIZE A	SCALE NA
2	GASKET	SILICONE	RED	1								
1	SHELL	BRASS	NICKEL	1								
	DESCRIPTION	MATERIAL	FINISH	QTY								