

Excellent Integrated System Limited

Stocking Distributor

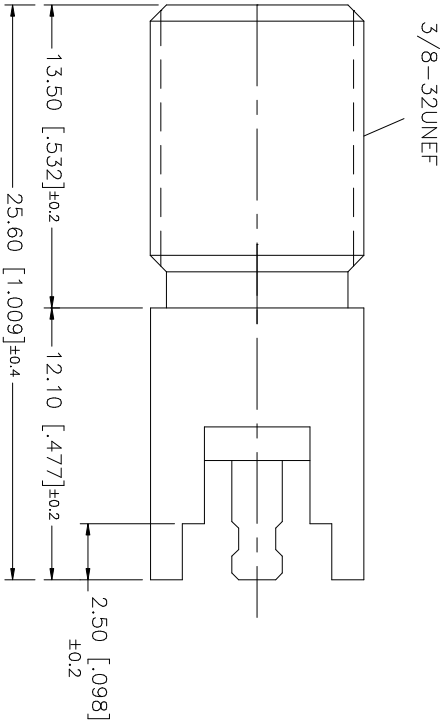
Click to view price, real time Inventory, Delivery & Lifecycle Information:

[Amphenol RF](#)
[222141](#)

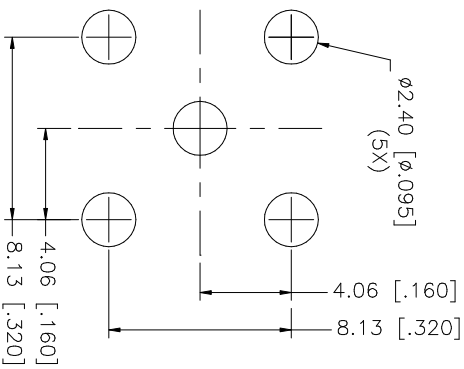
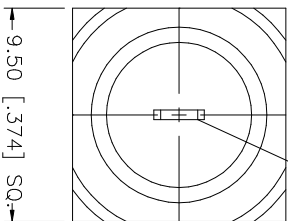
For any questions, you can email us directly:

sales@integrated-circuit.com

REV.	DATE	DESCRIPTION
A	06/03/03	ADD MOUNTING HOLES / UPDATE DRAWING FORMAT
B	06/25/04	MODIFY PLATING SPEC.



CONTACT MUST BE CAPTIVATED
 BUT FREE TO ROTATE



8					UNLESS OTHERWISE SPECIFIED DIMENSIONS ARE IN INCHES AND FOR SUBSEQUENT REFERENCE ONLY.	APPROVALS	DATE	<h1>Amphenol Connex</h1> <p>F P.C. MOUNT CONNECTOR</p>
7					TOLERANCES FOR MILLIMETERS ARE:	G.R.S.	06/25/04	
6					0.5 - 8mm ± 0.20mm	CHECKED		
5					8 - 30mm ± 0.40mm	ISSUED		
4	INSULATOR	P.P.	NATURAL	1	30 - 120mm ± 0.50mm	SHEET	1 OF 1	
3	CONTACT FIN	BRASS	TIN	1	UNLESS OTHERWISE SPECIFIED DIMENSIONS FOR INCHES ARE:	CAD FILE	C:/222/222141.DWG	
2	INSULATOR	P.P.	NATURAL	1	.020 - .315 = ± 0.007"	DWG. NO.	222141.DWG	
1	BODY	BRASS	TIN	1	.315 - 1.180 = ± 0.015"	REV.	B	
	DESCRIPTION	MATERIAL	FINISH	QTY	1.180 - 4.724 = ± 0.020"	SIZE	A	
					DO NOT SCALE DRAWING	SCALE	NA	