

Excellent Integrated System Limited

Stocking Distributor

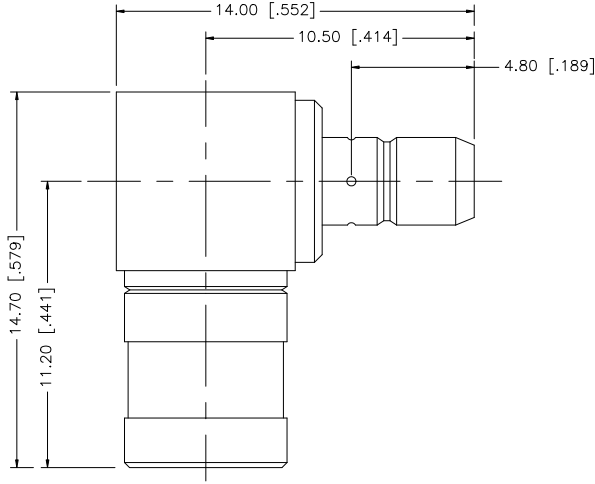
Click to view price, real time Inventory, Delivery & Lifecycle Information:

[Amphenol RF](#)
[142248](#)

For any questions, you can email us directly:

sales@integrated-circuit.com

REV.	DATE	DESCRIPTION
NC	09/06/07	INITIAL RELEASE



				UNLESS OTHERWISE SPECIFIED DIMENSIONS ARE IN MILLIMETERS; DIMENSIONS IN [] ARE IN INCHES AND FOR CUSTOMER REFERENCE ONLY.	APPROVALS	DATE	Amphenol Connex
8				UNLESS OTHERWISE SPECIFIED TOLERANCES FOR MILLIMETERS ARE: 0.5 - 8mm ± 0.20mm 8 - 30mm ± 0.40mm 30 - 120mm ± 0.50mm UNLESS OTHERWISE SPECIFIED TOLERANCES FOR INCHES ARE: .020 - .315 = ± 0.007" .315 - 1.180 = ± 0.015" 1.180 - 4.724 = ± 0.020" DO NOT SCALE DRAWING	DRAWN	G.R.S.	
7					CHECKED		
6					ISSUED		
5					SHEET	1 OF 1	
4					CAD FILE		
3	CONTACT PIN	BER. COPPER	GOLD				PART DESCRIPTION
2	INSULATOR	TEFLON	NATURAL				SMB MALE TO SMB FEMALE R/A ADAPTER
1	BODY	BRASS	GOLD				PART NO.
DESCRIPTION				MATERIAL	FINISH	QTY	142248
							DWG. NO. 142248.DWG
							REV. NC SIZE A SCALE NA