

Excellent Integrated System Limited

Stocking Distributor

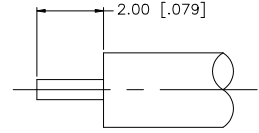
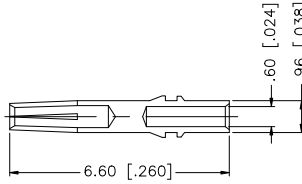
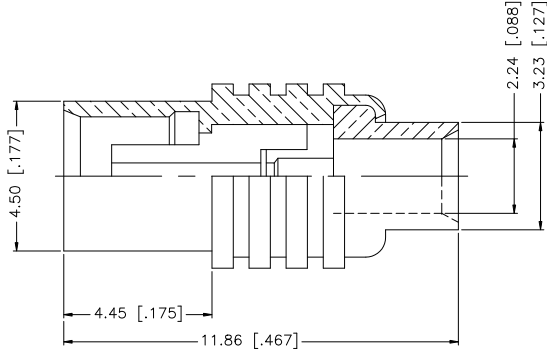
Click to view price, real time Inventory, Delivery & Lifecycle Information:

[Amphenol RF](#)
[252131](#)

For any questions, you can email us directly:

sales@integrated-circuit.com

REV.	DATE	ECR NO.	DESCRIPTION
NC	01/19/98	-	INITIAL RELEASE
A	06/24/08	100039	UPDATE DRAWING FORMAT



RECOMMENDED CABLE STRIPPING DIMENSIONS

				UNLESS OTHERWISE SPECIFIED DIMENSIONS ARE IN MILLIMETERS. DIMENSIONS IN [] ARE IN INCHES AND FOR CUSTOMER REFERENCE ONLY.	APPROVALS	DATE	Amphenol Connex	
8				UNLESS OTHERWISE SPECIFIED TOLERANCES FOR MILLIMETERS ARE: 0.5 - 8mm ± 0.20mm 8 - 30mm ± 0.40mm 30 - 120mm ± 0.50mm UNLESS OTHERWISE SPECIFIED TOLERANCES FOR INCHES ARE: .020 - .315 = ± 0.007" .315 - 1.180 = ± 0.015" 1.180 - 4.724 = ± 0.020"	DRAWN	GRS		06/24/08
7					CHECKED			
6					ISSUED			
5					SHEET	1 OF 1		
4							PART NO. 252131	
3	CONTACT PIN	BER. COPPER	GOLD	1				
2	INSULATOR	PTFE	NATURAL	1				
1	BODY	BRASS	GOLD	1				
	DESCRIPTION	MATERIAL	FINISH	QTY	DO NOT SCALE DRAWING	CAD FILE C:/252/252131.DWG	DWG. NO. 252131.DWG	REV. A SIZE A SCALE NA