

Excellent Integrated System Limited

Stocking Distributor

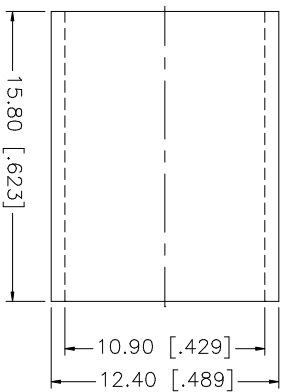
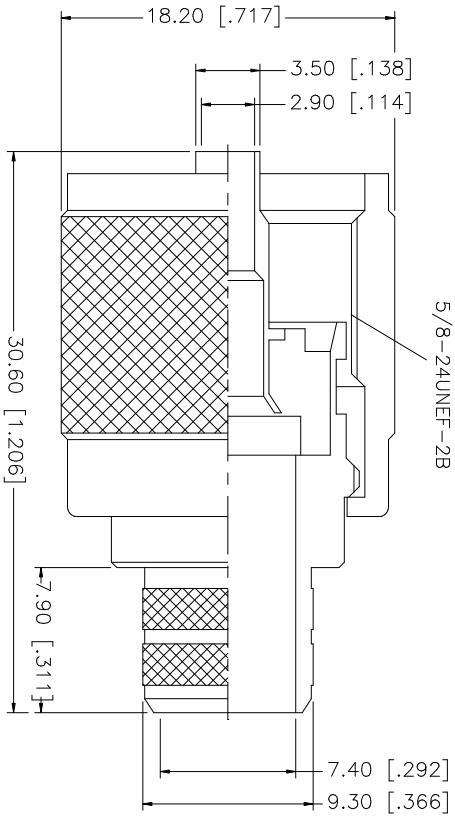
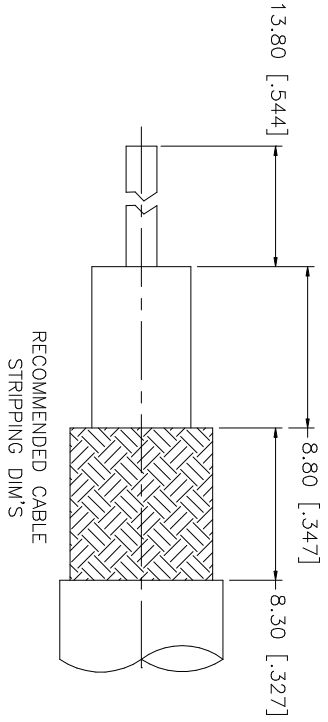
Click to view price, real time Inventory, Delivery & Lifecycle Information:

[Amphenol RF](#)
[182130](#)

For any questions, you can email us directly:

sales@integrated-circuit.com

REV.	DATE	DESCRIPTION
NC	04/14/03	INITIAL RELEASE



NOTE:
 1. CRIMPED FERRULE
 HEX CRIMP SIZE .429"
 2. CRIMPED CONTACT PIN
 HEX CRIMP SIZE 118"

NO.	DESCRIPTION	MATERIAL	FINISH	QTY	UNLESS OTHERWISE SPECIFIED DIMENSIONS ARE IN MILLIMETERS. DIMENSIONS IN INCHES ARE IN PARENTHESES. TOLERANCES FOR MILLIMETERS ARE: 0.5 - 8mm ± 0.20mm 8 - 30mm ± 0.40mm 30 - 120mm ± 0.50mm UNLESS OTHERWISE SPECIFIED TOLERANCES FOR INCHES ARE: .315 - 1.180 = ± 0.007" 1.180 - 4.724 = ± 0.020"	APPROVALS	DATE	PART DESCRIPTION				
8						DRAWN	G.R.S.	04/14/03	Amphenol Connex UHF CRIMP PLUG (FOR BELDEN 8214, 9913, 9914, LMR400 CABLE) PART NO. 182130			
7					CHECKED							
6					ISSUED							
4	FERRULE	COPPER	NICKEL	1	SHEET	1 OF 1						
3	CONTACT PIN	BRASS	GOLD	1								
2	INSULATOR	PHENOLIC	YELLOW	1								
1	BODY	BRASS	NICKEL	1								
	DESCRIPTION	MATERIAL	FINISH	QTY	DO NOT SCALE DRAWING	CAD FILE	C:/182/182130.DWG	DWG. NO.	182130.DWG	REV. NC	SIZE A	SCALE NA