

## **Excellent Integrated System Limited**

Stocking Distributor

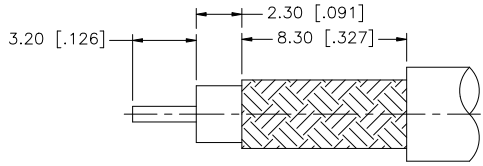
Click to view price, real time Inventory, Delivery & Lifecycle Information:

[Amphenol RF](#)  
[192100](#)

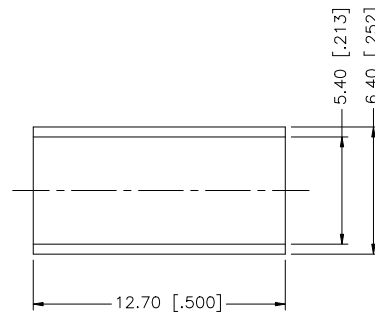
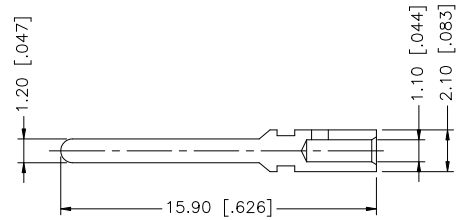
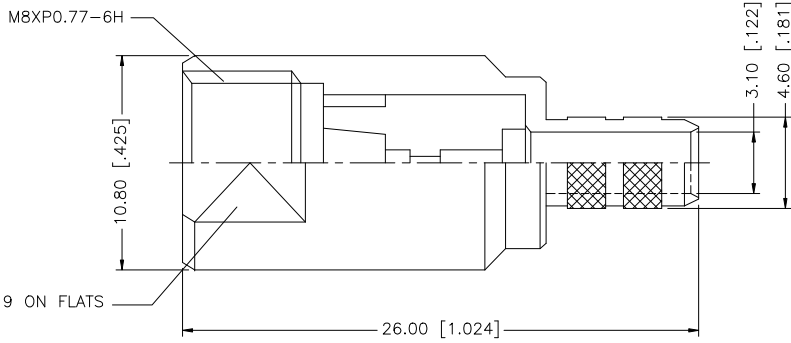
For any questions, you can email us directly:

[sales@integrated-circuit.com](mailto:sales@integrated-circuit.com)

REV.	DATE	DESCRIPTION
NC	05/31/96	INITIAL RELEASE
A	07/31/07	UPDATE DRAWING FORMAT



RECOMMENDED CABLE STRIPPING DIMS



8				<small>UNLESS OTHERWISE SPECIFIED DIMENSIONS ARE IN MILLIMETERS. DIMENSIONS IN [ ] ARE IN INCHES AND FOR CUSTOMER REFERENCE ONLY.</small> <small>UNLESS OTHERWISE SPECIFIED TOLERANCES FOR MILLIMETERS ARE:</small> 0.5 - 8mm ± 0.20mm 8 - 30mm ± 0.40mm 30 - 120mm ± 0.50mm <small>UNLESS OTHERWISE SPECIFIED TOLERANCES FOR INCHES ARE:</small> .020 - .315 = ± 0.007" .315 - 1.180 = ± 0.015" 1.180 - 4.724 = ± 0.020" DO NOT SCALE DRAWING	APPROVALS	DATE	<h1 style="color: blue; text-align: center;">Amphenol Connex</h1> <p style="text-align: center;">FME CRIMP PLUG (FOR RG-58C/U CABLE)</p>	
7			DRAWN		G.R.S.	07/31/07		
6			CHECKED					
5			ISSUED					
4	FERRULE	COPPER	NICKEL		1			
3	CONTACT PIN	BRASS	GOLD		1			
2	INSULATOR	TEFLON	NATURAL		1			
1	BODY	BRASS	NICKEL		1			
	DESCRIPTION	MATERIAL	FINISH	QTY	CAD FILE	C:/192/192100.DWG	PART NO.	192100
					DWG. NO.	192100.DWG	REV.	A
							SIZE	A
							SCALE	NA