

Excellent Integrated System Limited

Stocking Distributor

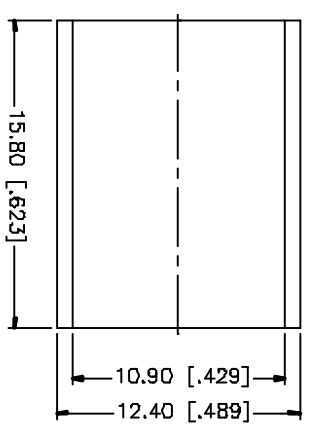
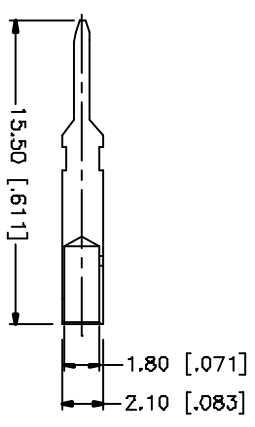
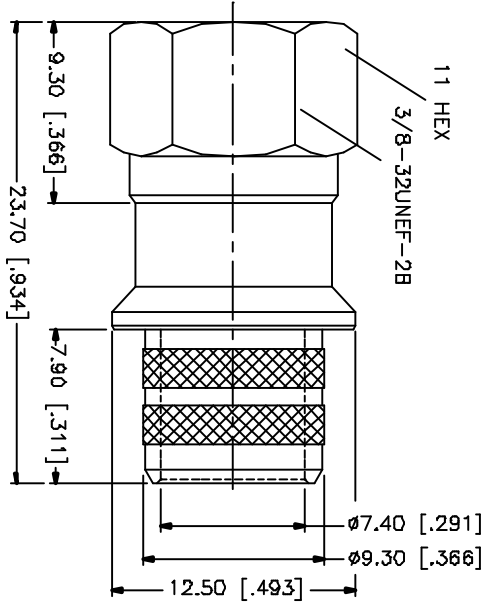
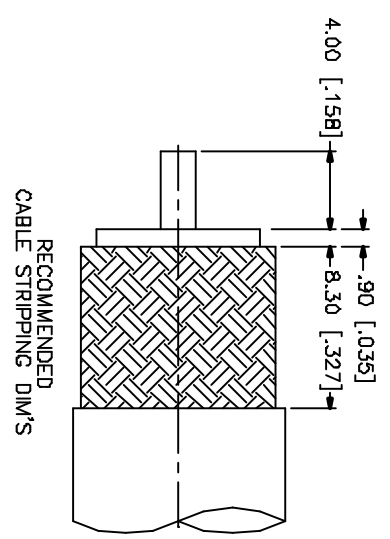
Click to view price, real time Inventory, Delivery & Lifecycle Information:

[Amphenol RF](#)
[222195](#)

For any questions, you can email us directly:

sales@integrated-circuit.com

REV	DATE	DESCRIPTION
NC	01/11/05	INITIAL RELEASE



CRIMP NOTES:

1. CRIMPED FERRULE
HEX CRIMP SIZE .429"
2. CRIMPED CONTACT PIN
HEX CRIMP SIZE .068"

QTY	DESCRIPTION	MATERIAL	FINISH	QTY	DO NOT SCALE DRAWING	CAD FILE	APPROVALS	DATE	PART DESCRIPTION
1	BODY	BRASS	NICKEL	1	1.180 - 4.724 = ± D.0220*	C:/222/222195.DWG	G.R.S.	01/11/05	F CRIMP PLUG (FOR RG-11/U - 14 AWG CONTACT)
1	INSULATOR	DELFIN	NATURAL	1	.315 - 1.180 = ± 0.015*				
1	CONTACT PIN	BRASS	GOLD	1	.020 - .315 = ± D.007*				
1	FERRULE	COOPER	NICKEL	1	30 - 120mm ± 0.50mm				
5					8 - 30mm ± 0.40mm				
7					0.5 - 8mm ± 0.20mm				
8					UNLESS OTHERWISE SPECIFIED DIMENSIONS ARE IN MILLIMETERS DIMENSIONS IN [] ARE IN INCHES AND PER QUOTE PRECEDENCE D.O.L.				
<p>UNLESS OTHERWISE SPECIFIED DIMENSIONS ARE IN MILLIMETERS DIMENSIONS IN [] ARE IN INCHES AND PER QUOTE PRECEDENCE D.O.L.</p> <p>UNLESS OTHERWISE SPECIFIED TOLERANCES FOR MILLIMETERS ARE</p> <p>0.5 - 8mm ± 0.20mm</p> <p>8 - 30mm ± 0.40mm</p> <p>30 - 120mm ± 0.50mm</p> <p>UNLESS OTHERWISE SPECIFIED TOLERANCES FOR INCHES ARE</p> <p>.020 - .315 = ± D.007*</p> <p>.315 - 1.180 = ± 0.015*</p> <p>1.180 - 4.724 = ± D.0220*</p>									
<p>AMPHENOL CONNEX</p>						<p>222195</p>			
<p>DESCRIPTION</p>						<p>REV. NC</p>			
<p>MATERIAL</p>						<p>SIZE A</p>			
<p>FINISH</p>						<p>SCALE NA</p>			