

Excellent Integrated System Limited

Stocking Distributor

Click to view price, real time Inventory, Delivery & Lifecycle Information:

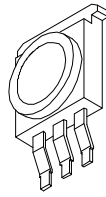
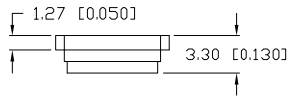
[Lumex, Inc.](#)
[SML-LX1610RGBW/A](#)

For any questions, you can email us directly:
sales@integrated-circuit.com

UNCONTROLLED DOCUMENT

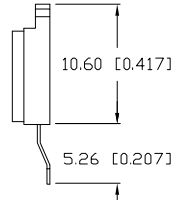
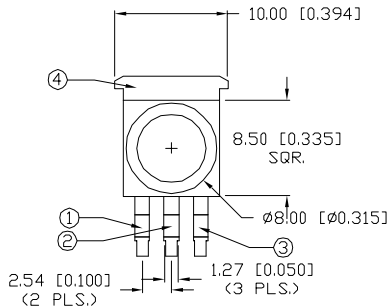
PART NUMBER
SML-LX1610RGBW/A

REV.



ELECTRO-OPTICAL CHARACTERISTICS $T_A=25^\circ\text{C}$

PARAMETER	MIN	TYP	MAX	UNITS	TEST COND	
PEAK WAVELENGTH		626 (RED)		nm		
		525 (GREEN)		nm		
		470 (BLUE)		nm		
FORWARD VOLTAGE (R)		2.1	2.79	V _f	I _f =300mA	
	(G)		3.5	3.99	V _f	I _f =350mA
	(B)		3.5	3.99	V _f	I _f =350mA
REVERSE VOLTAGE		5.0		V _r	I _r =100μA	
TOTAL FLUX (R/G/B)		25/25/8		lm		
VIEWING ANGLE		110		2x theta		
EMITTED COLOR: RED/GREEN/BLUE						
EPOXY LENS FINISH: WHITE DIFFUSED						

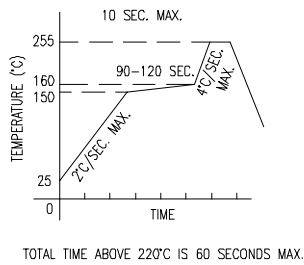


LIMITS OF SAFE OPERATION AT 25°C

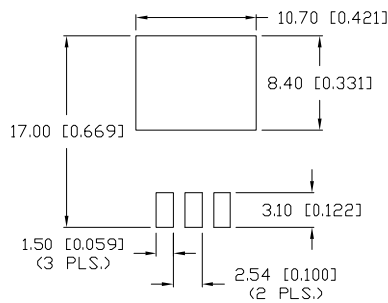
PARAMETER	COLORS	MAX	UNITS
PEAK FORWARD CURRENT*	(R/G/B)	350/500/500	mA
STEADY CURRENT	(R/G/B)	300/350/350	mA
POWER DISSIPATION		3.5	W
OPERATING TEMP.		-30 TO +85	°C
STORAGE TEMP.		-30 TO +85	°C
SOLDERING TEMP.		+260	°C
2.0mm FROM BODY			3 SEC. MAX

*T<10μS

LEAD FREE REFLOW PROFILE



SOLDER PAD LAYOUT



CAUTION: STATIC SENSITIVE DEVICE
 FOLLOW PROPER E.S.D. HANDLING PROCEDURES
 WHEN WORKING WITH THIS PART.

NOTES:

1. 50 PCS. IN EACH TUBE.



UNCONTROLLED DOCUMENT

*UNLESS OTHERWISE SPECIFIED TOLERANCES PER DECIMAL PRECISION ARE: X=±1 (±0.039), X.X=±0.5 (±0.020), X.XX=±0.25 (±0.010), X.XXX=±0.127 (±0.005). LEAD SIZE=±0.05 (±0.002), LEAD LENGTH=±0.75 (±0.030). MIN.=^{+0.00}_{-0.00} DECIMAL PRECISION MAX.=^{+0.00}_{-0.00} DECIMAL PRECISION

REV. PART NUMBER
SML-LX1610RGBW/A

CONFIDENTIAL INFORMATION
 THE INFORMATION CONTAINED IN THIS DOCUMENT IS THE PROPERTY OF LUMEX INC. EXCEPT AS SPECIFICALLY AUTHORIZED IN WRITING BY LUMEX INC., THE HOLDER OF THIS DOCUMENT SHALL KEEP ALL INFORMATION CONTAINED HEREIN CONFIDENTIAL AND SHALL PROTECT SAME IN WHOLE OR IN PART FROM DISCLOSURE AND DISSEMINATION TO ALL THIRD PARTIES.



290 E. HELEN ROAD
 PALATINE, IL 60067-6976
 PHONE: +1.847.359.2790
 US WEB: www.lumex.com
 TW WEB: www.lumex.com.tw

10.60 x 10mm HIGH POWER LED, RGB LEDs.

RELIABILITY NOTE
 OUR MANY YEARS OF EXPERIENCE DATA ACCUMULATION INDICATE THAT SOLDER HEAT IS A MAJOR CAUSE OF EARLY AND FUTURE FAILURE. PLEASE PAY ATTENTION TO YOUR SOLDERING PROCESS.

DRAWN BY: JN CHECKED BY: APPROVED BY: DATE: 10.14.08
 PAGE: 1 OF 1 SCALE: N/A