

Excellent Integrated System Limited

Stocking Distributor

Click to view price, real time Inventory, Delivery & Lifecycle Information:

[Powerex Inc.](#)
[M81702FP](#)

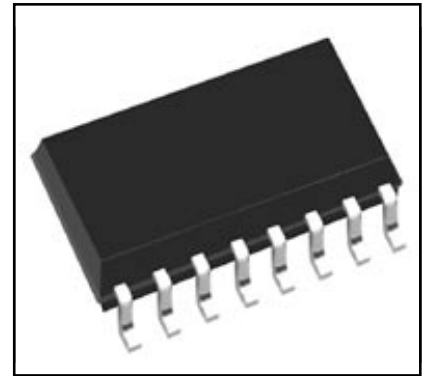
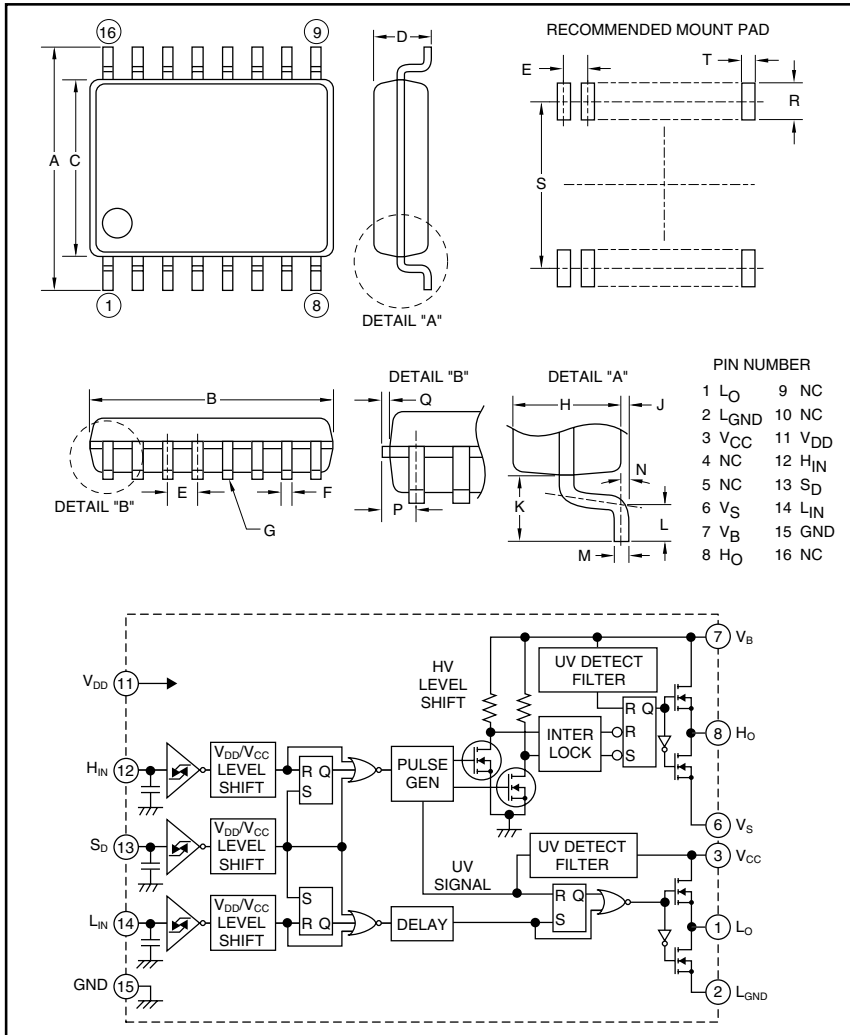
For any questions, you can email us directly:
sales@integrated-circuit.com



Powerex, Inc., 200 E. Hillis Street, Youngwood, Pennsylvania 15697-1800 (724) 925-7272

M81702FP

HVIC
High Voltage Integrated Circuit
600 Volts/±2 Amperes



Description:
 M81702FP is a high voltage Power MOSFET and IGBT module driver for half-bridge applications.

- Features:**
- Floating Supply Voltage
 - Output Current
 - Half-Bridge Driver
 - SOP-16

- Applications:**
- HID
 - PDP
 - MOSFET Driver
 - IGBT Driver
 - Inverter Module Control

Ordering Information:
 M81702FP is a ±2 Ampere, 600 Volt HVIC, High Voltage Integrated Circuit

Outline Drawing and Circuit Diagram

Dimensions	Inches	Millimeters
A	0.31±0.01	7.8±0.3
B	0.41±0.004	10.1±0.1
C	0.21±0.004	5.3±0.1
D	0.12	2.10
E	0.05	1.27
F	0.02±0.002	0.4±0.05
G	0.004	0.1
H	0.07	1.8
J	0.01±0.004	0.1±0.1

Dimensions	Inches	Millimeters
K	0.05	1.25
L	0.024±0.008	0.6±0.2
M	0.1±0.002	0.2±0.05
N	4°±4°	4°±4°
P	0.03 Max.	0.755 Max.
Q	0.006	0.15
R	0.05 Min.	Min. 1.27
S	0.30	7.62
T	0.029	0.76



Powerex, Inc., 200 E. Hillis Street, Youngwood, Pennsylvania 15697-1800 (724) 925-7272

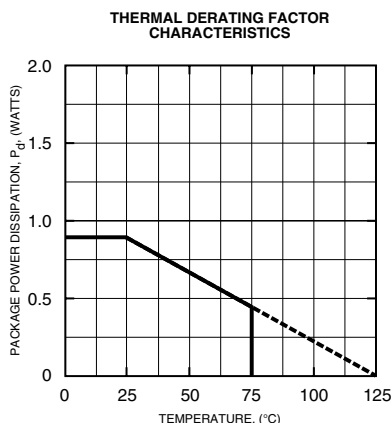
M81702FP
HVIC, High Voltage Integrated Circuit
 600 Volts/±2 Amperes

Absolute Maximum Ratings, $T_a = 25^\circ\text{C}$ unless otherwise specified

Characteristics	Symbol	M81702FP	Units
High Side Floating Supply Absolute Voltage	V_B	-0.5 ~ 624	Volts
High Side Floating Supply Offset Voltage	V_S	-0.5 ~ 600	Volts
High Side Floating Supply Voltage ($V_{BS} = V_B - V_S$)	V_{BS}	-0.5 ~ 24	Volts
Allowable Offset Supply Voltage Minus Surge ($P_W < 1\mu\text{s}$)	$-V_S$	-5	Volts
High Side Output Voltage	V_{HO}	$V_S - 0.5 \sim V_B + 0.5$	Volts
Low Side Fixed Supply Voltage	V_{CC}	-0.5 ~ 24	Volts
Low Side Output Voltage	V_{LO}	-0.5 ~ $V_{CC} + 0.5$	Volts
Logic Supply Voltage	V_{DD}	-0.5 ~ 24	Volts
Logic Input Voltage (H_{IN}, L_{IN})	V_{IN}	-0.5 ~ $V_{DD} + 0.5$	Volts
Shutdown Input Voltage	S_D	-0.5 ~ $V_{DD} + 0.5$	Volts
Low Side Return Offset Voltage ($V_{CC} - L_{GND} < 24\text{V}$)	L_{GND}	-5 ~ $V_{CC} + 0.5$	Volts
Allowable Offset Supply Voltage Transient	dV_S/dt	±50	V/ns
Package Power Dissipation ($T_a = 25^\circ\text{C}$, On Board)	P_d	0.88	Watts
Linear Derating Factor ($T_a > 25^\circ\text{C}$, On Board)	K_θ	-8.8	mW/°C
Junction to Case Thermal Resistance	$R_{th(j-c)}$	50	°C/W
Junction Temperature	T_j	-20 ~ 125	°C
Operation Temperature	T_{opr}	-20 ~ 75	°C
Storage Temperature	T_{stg}	-40 ~ 125	°C

Recommended Operating Conditions

Characteristics	Symbol	Test Conditions	Min.	Typ.	Max.	Units
High Side Floating Supply Absolute Voltage	V_B		$V_S + 10$	—	$V_S + 20$	Volts
High Side Floating Supply Offset Voltage	V_S		0	—	500	Volts
High Side Floating Supply Voltage	V_{BS}	$V_{BS} = V_B - V_S$	10	—	20	Volts
Low Side Fixed Supply Voltage	V_{CC}		10	—	20	Volts
Logic Supply Voltage	V_{DD}		5	—	20	Volts
Logic Input Voltage	V_{IN}	H_{IN}, L_{IN}	0	—	V_{DD}	Volts
Shutdown Input Voltage	S_D		0	—	V_{DD}	Volts
Low Side Return Offset Voltage	L_{GND}		-5	—	5	Volts





Powerex, Inc., 200 E. Hillis Street, Youngwood, Pennsylvania 15697-1800 (724) 925-7272

M81702FP
HVIC, High Voltage Integrated Circuit
 600 Volts/±2 Amperes

Electrical Characteristics

$T_a = 25^\circ\text{C}$, $V_{CC} = V_{BS} (= V_B - V_S) = V_{DD} = 15\text{V}$, $L_{GND} = 0\text{V}$ unless otherwise specified

Characteristics	Symbol	Test Conditions	Min.	Typ.	Max.	Units
Floating Supply Leakage Current	I_{FS}	$V_B = V_S = 600\text{V}$	—	—	1	μA
V_{BS} Standby Current	I_{BS}		—	0.4	0.7	mA
V_{CC} Standby Current	I_{CC}		—	0.75	1.5	mA
V_{DD} Standby Current	I_{DD}		—	—	10	μA
High Level Output Voltage	V_{OH}	$I_O = 0\text{A}$, L_O , H_O	13.8	14.4	—	Volts
Low Level Output Voltage	V_{OL}	$I_O = 0\text{A}$, L_O , H_O	—	—	0.1	Volts
High Level Input Threshold Voltage	V_{IH15}	H_{IN} , L_{IN}	—	8.4	9.5	Volts
Low Level Input Threshold Voltage	V_{IL15}	H_{IN} , L_{IN}	6.0	6.8	—	Volts
High Level Input Threshold Voltage	V_{IH5}	H_{IN} , L_{IN} ($V_{DD} = 5\text{V}$)	—	3.1	4.1	volts
Low Level Input Threshold Voltage	V_{IL5}	H_{IN} , L_{IN} ($V_{DD} = 5\text{V}$)	1.4	2.4	—	Volts
Shutdown High Level Input Threshold Voltage	V_{ISDH15}	S_D	—	8.4	9.5	Volts
Shutdown Low Level Input Threshold Voltage	V_{ISDL15}	S_D	6.0	6.8	—	Volts
Shutdown High Level Input Threshold Voltage	V_{ISDH5}	S_D ($V_{DD} = 5\text{V}$)	—	3.1	4.1	Volts
Shutdown Low Level Input Threshold Voltage	V_{ISDL5}	S_D ($V_{DD} = 5\text{V}$)	1.4	2.4	—	Volts
High Level Input Bias Current	I_{IH}	$V_{IN} = 15\text{V}$	—	75	150	μA
Low Level Input Bias Current	I_{IL}	$V_{IN} = 0\text{V}$	—	—	1.0	μA
V_{BS} Supply UV Reset Voltage	V_{BSuvr}		7.5	8.6	9.7	Volts
V_{BS} Supply UV Hysteresis Voltage	V_{BSuvh}		0.1	0.4	0.7	Volts
V_{BS} Supply UV Filter Time	t_{VBSuv}		—	10	—	μs
V_{CC} Supply UV Reset Voltage	V_{CCuvr}		7.5	8.6	9.7	Volts
V_{CC} Supply UV Hysteresis Voltage	V_{CCuvh}		0.1	0.4	0.7	Volts
V_{CC} Supply UV Filter Time	t_{VCCuv}		—	10	—	μs
Output High Level Short Circuit Pulsed Current	I_{OH}	$V_O = 0\text{V}$, $V_{IN} = 15\text{V}$, $P_W < 10\mu\text{s}$	—	-2.5	—	Amperes
Output Low Level Short Circuit Pulsed Current	I_{OL}	$V_O = 15\text{V}$, $V_{IN} = 0\text{V}$, $P_W < 10\mu\text{s}$	—	2.5	—	Amperes
Output High Level ON Resistance	R_{OH}	$I_O = -200\text{mA}$, $R_{OH} = (V_{OH} - V_O)/I_O$	—	10	13	Ω
Output Low Level ON Resistance	R_{OL}	$I_O = 200\text{mA}$, $R_{OL} = V_O/I_O$	—	2.5	3	Ω
High Side Turn-On Propagation Delay	$t_{dLH(HO)}$	$C_L = 1000\text{pF}$ between $H_O - V_S$	—	—	350	ns
High Side Turn-Off Propagation Delay	$t_{dHL(HO)}$	$C_L = 1000\text{pF}$ between $H_O - V_S$	—	—	330	ns
High Side Turn-On Rise Time	t_{rH}	$C_L = 1000\text{pF}$ between $H_O - V_S$	—	—	60	ns
High Side Turn-Off Fall Time	t_{fH}	$C_L = 1000\text{pF}$ between $H_O - V_S$	—	—	30	ns
Low Side Turn-On Propagation Delay	$t_{dLH(LO)}$	$C_L = 1000\text{pF}$ between $L_O - GND$	—	—	350	ns
Low Side Turn-Off Propagation Delay	$t_{dHL(LO)}$	$C_L = 1000\text{pF}$ between $L_O - GND$	—	—	330	ns
Low Side Turn-On Rise Time	t_{rL}	$C_L = 1000\text{pF}$ between $L_O - GND$	—	—	60	ns
Low Side Turn-Off Rise Time	t_{fL}	$C_L = 1000\text{pF}$ between $L_O - GND$	—	—	30	ns
Delay Matching, High Side and Low Side Turn-On	Δt_{dLH}	$ t_{dLH(HO)} - t_{dLH(LO)} $	—	—	30	ns
Delay Matching, High Side and Low Side Turn-Off	Δt_{dHL}	$ t_{dHL(HO)} - t_{dHL(LO)} $	—	—	30	ns
Shutdown Propagation Delay	t_{SD}	$C_L = 1000\text{pF}$ between $H_O - V_S$, $C_L = 1000\text{pF}$ between $L_O - GND$	—	—	350	ns



Powerex, Inc., 200 E. Hillis Street, Youngwood, Pennsylvania 15697-1800 (724) 925-7272

M81702FP
HVIC, High Voltage Integrated Circuit
 600 Volts/±2 Amperes

FUNCTION TABLE (X: H or L)

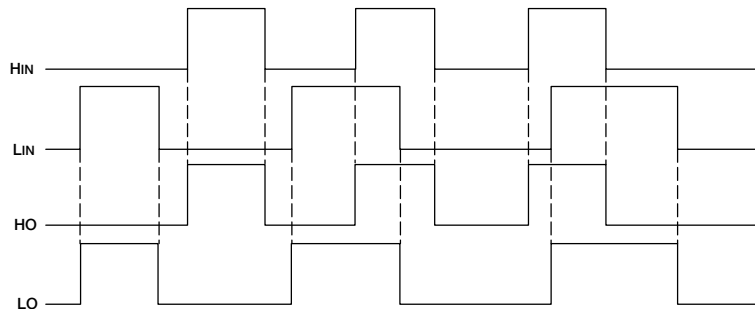
H _{IN}	L _{IN}	V _{BS} UV	V _{CC} UV	HO	LO	SD	Behavioral State
L	L	H	H	L	L	L	LO = OFF, HO = OFF
L	H	H	H	L	H	L	LO = ON, HO = OFF
H	L	H	H	H	L	L	LO = OFF, HO = ON
H	H	H	H	H	H	L	LO = ON, HO = ON
X	L	L	H	L	L	L	LO = OFF, HO = OFF, V _{BS} UV tripped
X	H	L	H	L	H	L	LO = ON, HO = OFF, V _{BS} UV tripped
L	X	H	L	L	L	L	LO = OFF, HO = OFF, V _{CC} UV tripped
H	X	H	L	L	L	L	LO = OFF, HO = OFF, V _{CC} UV tripped
X	X	H	H	L	L	H	LO = OFF, HO = OFF, SD = ON

Note : "L" state of V_{BS} UV and V_{CC} UV means that UV trip voltage.

TIMING DIAGRAM

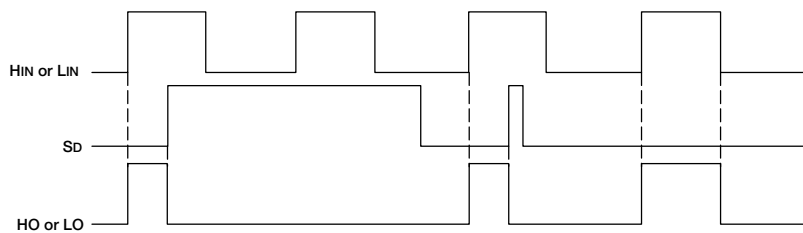
1. Input/Output Timing Diagram

When input signal (H_{IN} or L_{IN}) is "H", then output signal (HO or LO) is "H".
 Both input signals (H_{IN} and L_{IN}) are "H", then output signal (HO or LO) becomes "H".

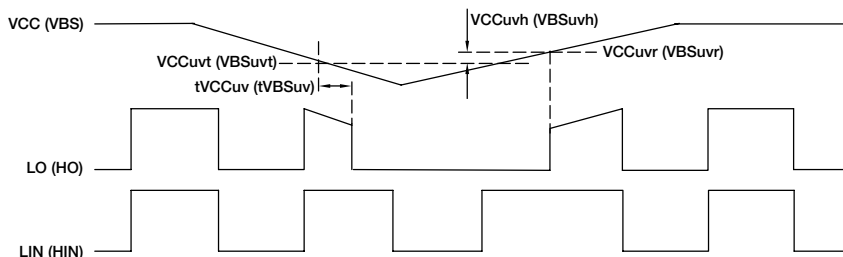


2. Shutdown Input Timing Diagram

When shutdown input signal (SD) is "H", then output signals (HO and LO) are "L".
 Output signals (HO and LO) keep "L" by shutdown input signal (SD) is "L" until next input signal (H_{IN} or L_{IN}) is "H".



3. V_{CC} (V_{BS}) Supply Under Voltage Lockout Timing Diagram



4. Allowable Supply Voltage Transient

Allowable high side floating supply voltage (V_{BS}) transient or low side fixed supply voltage (V_{CC}) transient are below 50V/μs.
 In case V_{BS} or V_{CC} are started more than 50V/μs, output signal (HO or LO) may be "H".