

Excellent Integrated System Limited

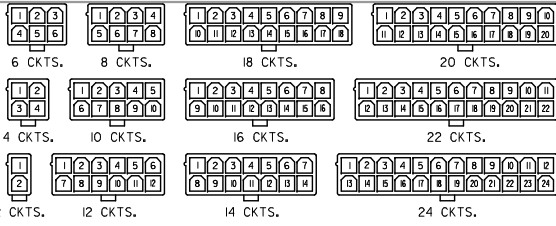
Stocking Distributor

Click to view price, real time Inventory, Delivery & Lifecycle Information:

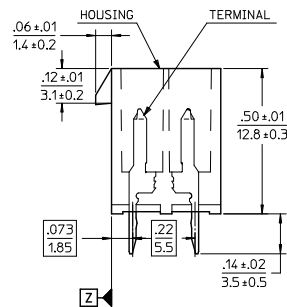
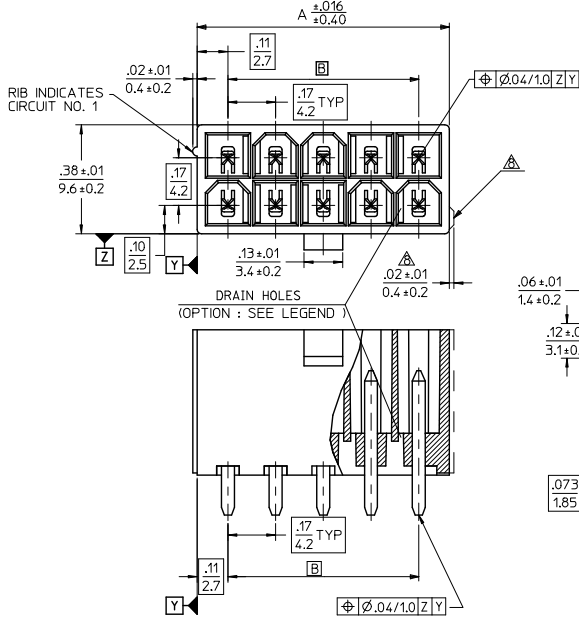
[Molex Connector Corporation](#)
[0039293026](#)

For any questions, you can email us directly:
sales@integrated-circuit.com

CIRCUIT SIZE	DIM. 'A'	DIM. 'B'
2	.21 (5.4)	—
4	.38 (9.6)	.17 (4.2)
6	.54 (13.8)	.33 (8.4)
8	.71 (18.0)	.50 (12.6)
10	.87 (22.2)	.66 (16.8)
12	1.04 (26.4)	.83 (21.0)
14	1.20 (30.6)	.99 (25.2)
16	1.37 (34.8)	1.16 (29.4)
18	1.54 (39.0)	1.32 (33.6)
20	1.70 (43.2)	1.49 (37.8)
22	1.87 (47.4)	1.65 (42.0)
24	2.03 (51.6)	1.82 (46.2)



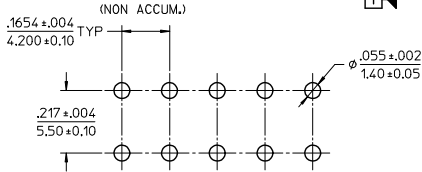
CIRCUIT SIZE LAYOUT



LEGEND

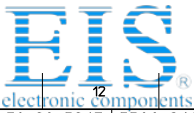
- BASE NUMBER: 5566 - N * * * * *
- CIRCUIT SIZE: [Diagram showing circuit size selection]
- ASS'Y TYPE: [Diagram showing assembly type selection]
- TERMINAL MATERIAL: SEE NOTE 1
- TERMINAL PLATING: SEE NOTE 2
- HOUSING MATERIAL: SEE NOTE 1
- COLOR OR PACKAGING:
 - BL : BLACK RE : RED GR : GRAY
 - BU : BLUE YE : YELLOW GRE : GREEN
 - V : VIOLET OR : ORANGE
 - TA : TRAY PACKAGING SEE NOTE 4
 - TR : TRAY PACKAGING SEE NOTE 4

- NOTES:
- MATERIALS:
 - HOUSING:
 - "BLANK" = NYLON 6/6, UL94V-2, COLOR: NATURAL
 - "210" = NYLON 6/6, UL94V-0, COLOR: NATURAL
 - "400" = NYLON 6/6, UL94V-0, COLOR: BLACK
 - TERMINALS:
 - "BLANK" = BRASS
 - "PB" = PHOSPHOR BRONZE
 - TERMINAL PLATING:
 - "BLANK" = BRIGHT TIN 0.00035/(0.00090) MIN. OVER COPPER .00020/(0.00050) MIN. (BRASS)
 - TIN .00035/(0.00090) MIN. REFLOW TREATMENT OR BRIGHT TIN .00035/(0.00090) MIN. (PHOSPHOR BRONZE)
 - "S" = .000100/(0.00254) MIN. BRIGHT TIN OVER .000050/(0.00127) MIN NICKEL
 - "GS2" = .000015/(0.00038) MIN. SELECT GOLD AND .000100/(0.00254) MIN. SELECT MATTE TIN OVER .000050/(0.00127) MIN. NICKEL OVERALL
 - "GS" = .000030/(0.00076) MIN. SELECT GOLD AND .000100/(0.00254) MIN. SELECT MATTE TIN OVER .000050/(0.00127) MIN. NICKEL OVERALL
 - PRODUCT SPECIFICATION: PS-5566-001
 - PACKAGING: "BLANK" = BULK PACKED, "TA" = TRAY PACK PER PK-5566-001, "TR" = TRAY PACK PER PK-5566
 - PART MATES WITH MINI-FIT JR. RECEPTACLE NO. 5557.
 - PART IS NOT DESIGNED FOR CURRENT SHARING.
 - PARTS ARE NOT DESIGNED TO BE MATED OR UN-MATED WHILE CIRCUITS ARE LIVE.
 - ANTI-SHINGLING RIB MAY OR MAY NOT APPEAR ON HOUSINGS.
 - PART CONFORMS TO CLASS 'B' REQUIREMENTS OF COSMETIC SPECIFICATION PS-45499-002.



RECOMMENDED HOLE LAYOUT FOR .070(1.78) MAX. THICK P.C. BOARD VIEWED FROM COMPONENT SIDE

ADD PINS EC NO: UCP2014-212 DRAWING NO: 2013/11/13 CHKD: JELL APPR: SMITH	QUALITY SYMBOLS ▽=0 ▽=0 ▽=0	GENERAL TOLERANCES (UNLESS SPECIFIED)	DIMENSION STYLE		SCALE 4:1	DESIGN UNITS METRIC	THIRD ANGLE PROJECTION
			mm	INCH			
L7	DESCRIPTION	4 PLACES ± --- ± ---	DRAWN BY H. HIRAMOTO	DATE '89/04/03	TITLE MINI FIT JR VERTICAL HEADER ASSEMBLIES WITHOUT PEGS		
		3 PLACES ± --- ± .005	CHECKED BY M. FUKUSHIMA	DATE '94/04/20			
		2 PLACES ± .13 ± .010	APPROVED BY FSMITH	DATE 2012/05/04	MOLEX INCORPORATED		
		1 PLACE ± .25 ± ---	MATERIAL NO. DOCUMENT NO.				
DRAFT WHERE APPLICABLE MUST REMAIN WITHIN DIMENSIONS		ANGULAR ± 3°	SEE TABLE		SD-5566-002		
			SIZE C		THIS DRAWING CONTAINS INFORMATION THAT IS PROPRIETARY TO MOLEX INCORPORATED AND SHOULD NOT BE USED WITHOUT WRITTEN PERMISSION		



Distributor of Molex Connector Corporation: Excellent Integrated System Limited

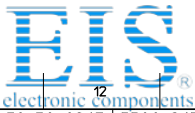
Datasheet of 0039293026 - CONN HEADER 2POS 4.2MM VERT TIN

Contact us: sales@integrated-circuit.com Website: www.integrated-circuit.com

13	12	11	10	9	8	7	6	5	4	3	2	1
39-29-5247	5566-24APB-210	39-30-9245	5566-24AGS2-210	39-29-6248	5566-24AGS-210	39-30-6242	5566-24AS-210	39-28-8240	5566-24A-210			
↑ -5227	↑ -22APB-210	↑ -9225	↑ -22AGS2-210	↑ -6228	↑ -22AGS-210	↑ -6222	↑ -22AS-210	↑ -8220	↑ -22A-210			24
↑ -5207	↑ -20APB-210	↑ -9205	↑ -20AGS2-210	↑ -6208	↑ -20AGS-210	↑ -6202	↑ -20AS-210	↑ -8200	↑ -20A-210			20
↑ -5187	↑ -18APB-210	↑ -9185	↑ -18AGS2-210	↑ -6188	↑ -18AGS-210	↑ -6182	↑ -18AS-210	↑ -8180	↑ -18A-210			18
↑ -5167	↑ -16APB-210	↑ -9165	↑ -16AGS2-210	↑ -6168	↑ -16AGS-210	↑ -6162	↑ -16AS-210	↑ -8160	↑ -16A-210			16
↑ -5147	↑ -14APB-210	↑ -9145	↑ -14AGS2-210	↑ -6148	↑ -14AGS-210	↑ -6142	↑ -14AS-210	↑ -8140	↑ -14A-210			14
↑ -5127	↑ -12APB-210	↑ -9125	↑ -12AGS2-210	↑ -6128	↑ -12AGS-210	↑ -6122	↑ -12AS-210	↑ -8120	↑ -12A-210			12
↑ -5107	↑ -10APB-210	↑ -9105	↑ -10AGS2-210	↑ -6108	↑ -10AGS-210	↑ -6102	↑ -10AS-210	↑ -8100	↑ -10A-210			10
↑ -5087	↑ -08APB-210	↑ -9085	↑ -08AGS2-210	↑ -6088	↑ -08AGS-210	↑ -6082	↑ -08AS-210	↑ -8080	↑ -08A-210			8
↑ -5067	↑ -06APB-210	↑ -9065	↑ -06AGS2-210	↑ -6068	↑ -06AGS-210	↑ -6062	↑ -06AS-210	↑ -8060	↑ -06A-210			6
↓ -5047	↓ -04APB-210	↓ -9045	↓ -04AGS2-210	↓ -6048	↓ -04AGS-210	↓ -6042	↓ -04AS-210	↓ -8040	↓ -04A-210			4
39-29-5027	5566-02APB-210	39-30-9025	5566-02AGS2-210	39-29-6028	5566-02AGS-210	39-30-6022	5566-02AS-210	39-28-8020	5566-02A-210			2
EDP NO.	ENG. NO.	EDP NO.	ENG. NO.	EDP NO.	ENG. NO.	EDP NO.	ENG. NO.	EDP NO.	ENG. NO.			CKT. SIZE
5566-NAPB-210		5566-NAGS2-210		5566-NAGS-210		5566-NAS-210		5566-NA-210				
39-29-5246	5566-24APB	39-30-9244	5566-24AGS2	39-29-0243	5566-24AGS	39-30-6241	5566-24AS	39-28-1243	5566-24A			24
↑ -5226	↑ -22APB	↑ -9224	↑ -22AGS2	↑ -0223	↑ -22AGS	↑ -6221	↑ -22AS	↑ -1223	↑ -22A			22
↑ -5206	↑ -20APB	↑ -9204	↑ -20AGS2	↑ -0203	↑ -20AGS	↑ -6201	↑ -20AS	↑ -1203	↑ -20A			20
↑ -5186	↑ -18APB	↑ -9184	↑ -18AGS2	↑ -0183	↑ -18AGS	↑ -6181	↑ -18AS	↑ -1183	↑ -18A			18
↑ -5166	↑ -16APB	↑ -9164	↑ -16AGS2	↑ -0163	↑ -16AGS	↑ -6161	↑ -16AS	↑ -1163	↑ -16A			16
↑ -5146	↑ -14APB	↑ -9144	↑ -14AGS2	↑ -0143	↑ -14AGS	↑ -6141	↑ -14AS	↑ -1143	↑ -14A			14
↑ -5126	↑ -12APB	↑ -9124	↑ -12AGS2	↑ -0123	↑ -12AGS	↑ -6121	↑ -12AS	↑ -1123	↑ -12A			12
↑ -5106	↑ -10APB	↑ -9104	↑ -10AGS2	↑ -0103	↑ -10AGS	↑ -6101	↑ -10AS	↑ -1103	↑ -10A			10
↑ -5086	↑ -08APB	↑ -9084	↑ -08AGS2	↑ -0083	↑ -08AGS	↑ -6081	↑ -08AS	↑ -1083	↑ -08A			8
↑ -5066	↑ -06APB	↑ -9064	↑ -06AGS2	↑ -0063	↑ -06AGS	↑ -6061	↑ -06AS	↑ -1063	↑ -06A			6
↓ -5046	↓ -04APB	↓ -9044	↓ -04AGS2	↓ -0043	↓ -04AGS	↓ -6041	↓ -04AS	↓ -1043	↓ -04A			4
39-29-5026	5566-02APB	39-30-9024	5566-02AGS2	39-29-0023	5566-02AGS	39-30-6021	5566-02AS	39-28-1023	5566-02A			2
EDP NO.	ENG. NO.	EDP NO.	ENG. NO.	EDP NO.	ENG. NO.	EDP NO.	ENG. NO.	EDP NO.	ENG. NO.			CKT. SIZE
5566-NAPB		5566-NAGS2		5566-NAGS		5566-NAS		5566-NA				

PARTS WITH OUT DRAIN HOLES

SEE SHEET 1 EC NO: UCP2014-212 DRAWING NO: 2013/11/13 CHKD: BELL APPR: SMITH L7 REV	QUALITY SYMBOLS 	GENERAL TOLERANCES (UNLESS SPECIFIED)		DIMENSION STYLE		SCALE	DESIGN UNITS	THIRD ANGLE PROJECTION	
		mm	INCH	IN/MM		1:1	METRIC		
		4 PLACES ± --- ± ---		DRAWN BY	DATE	TITLE MINI FIT JR VERTICAL HEADER ASSEMBLIES WITHOUT PEGS			
		3 PLACES ± --- ± .005		H.HIRAMOTO	'89/04/03				
2 PLACES ± .13 ± .010		CHECKED BY	DATE	MOLEX INCORPORATED					
1 PLACE ± .25 ± ---		M. FUKUSHIMA	'94/04/20						
ANGULAR ± 3°		APPROVED BY	DATE	MATERIAL NO. SD-5566-002 DOCUMENT NO.					
DRAFT WHERE APPLICABLE MUST REMAIN WITHIN DIMENSIONS		F. SMITH	2012/05/04						
		SEE TABLE		SHEET NO. 2 OF 5					
		THIS DRAWING CONTAINS INFORMATION THAT IS PROPRIETARY TO MOLEX INCORPORATED AND SHOULD NOT BE USED WITHOUT WRITTEN PERMISSION							



Distributor of Molex Connector Corporation: Excellent Integrated System Limited

Datasheet of 0039293026 - CONN HEADER 2POS 4.2MM VERT TIN

Contact us: sales@integrated-circuit.com Website: www.integrated-circuit.com

13	12	11	10	9	8	7	6	5	4	3	2	1
39-30-9247	5566-24BGS2-210	39-31-0248	5566-24BGS-210	39-31-0242	5566-24BS-210	39-31-0240	5566-24B-210	39-30-6224	5566-24APBS-210	24		
↑ -9227	↑ -22BGS2-210	↑ -0228	↑ -22BGS-210	↑ -0222	↑ -22BS-210	↑ -0220	↑ -22B-210	↑ -6224	↑ -22APBS-210	22		
↑ -9207	↑ -20BGS2-210	↑ -0208	↑ -20BGS-210	↑ -0202	↑ -20BS-210	↑ -0200	↑ -20B-210	↑ -6204	↑ -20APBS-210	20		
↑ -9187	↑ -18BGS2-210	↑ -0188	↑ -18BGS-210	↑ -0182	↑ -18BS-210	↑ -0180	↑ -18B-210	↑ -6184	↑ -18APBS-210	18		
↑ -9167	↑ -16BGS2-210	↑ -0168	↑ -16BGS-210	↑ -0162	↑ -16BS-210	↑ -0160	↑ -16B-210	↑ -6164	↑ -16APBS-210	16		
↑ -9147	↑ -14BGS2-210	↑ -0148	↑ -14BGS-210	↑ -0142	↑ -14BS-210	↑ -0140	↑ -14B-210	↑ -6144	↑ -14APBS-210	14		
↑ -9127	↑ -12BGS2-210	↑ -0128	↑ -12BGS-210	↑ -0122	↑ -12BS-210	↑ -0120	↑ -12B-210	↑ -6124	↑ -12APBS-210	12		
↑ -9107	↑ -10BGS2-210	↑ -0108	↑ -10BGS-210	↑ -0102	↑ -10BS-210	↑ -0100	↑ -10B-210	↑ -6104	↑ -10APBS-210	10		
↑ -9087	↑ -08BGS2-210	↑ -0088	↑ -08BGS-210	↑ -0082	↑ -08BS-210	↑ -0080	↑ -08B-210	↑ -6084	↑ -08APBS-210	8		
↑ -9067	↑ -06BGS2-210	↑ -0068	↑ -06BGS-210	↑ -0062	↑ -06BS-210	↑ -0060	↑ -06B-210	↑ -6064	↑ -06APBS-210	6		
↓ -9047	↓ -04BGS2-210	↓ -0048	↓ -04BGS-210	↓ -0042	↓ -04BS-210	↓ -0040	↓ -04B-210	↓ -6044	↓ -04APBS-210	4		
39-30-9027	5566-02BGS2-210	39-31-0028	5566-02BGS-210	39-31-0022	5566-02BS-210	39-31-0020	5566-02B-210	39-30-6024	5566-02APBS-210	2		
EDP NO.	ENG. NO.	EDP NO.	ENG. NO.	EDP NO.	ENG. NO.	EDP NO.	ENG. NO.	EDP NO.	ENG. NO.	EDP NO.	ENG. NO.	CKT. SIZE
5566-NBGS2-210		5566-NBGS-210		5566-NBS-210		5566-NB-210		5566-NAPBS-210				
39-30-9246	5566-24BGS2	39-31-0247	5566-24BGS	39-31-0241	5566-24BS	39-29-3246	5566-24B	39-30-6243	5566-24APBS	24		
↑ -9226	↑ -22BGS2	↑ -0227	↑ -22BGS	↑ -0221	↑ -22BS	↑ -3226	↑ -22B	↑ -6223	↑ -22APBS	22		
↑ -9206	↑ -20BGS2	↑ -0207	↑ -20BGS	↑ -0201	↑ -20BS	↑ -3206	↑ -20B	↑ -6203	↑ -20APBS	20		
↑ -9186	↑ -18BGS2	↑ -0187	↑ -18BGS	↑ -0181	↑ -18BS	↑ -3186	↑ -18B	↑ -6183	↑ -18APBS	18		
↑ -9166	↑ -16BGS2		↑ -16BGS	↑ -0161	↑ -16BS	↑ -3166	↑ -16B	↑ -6163	↑ -16APBS	16		
↑ -9146	↑ -14BGS2	↑ -0147	↑ -14BGS	↑ -0141	↑ -14BS	↑ -3146	↑ -14B	↑ -6143	↑ -14APBS	14		
↑ -9126	↑ -12BGS2	↑ -0127	↑ -12BGS	↑ -0121	↑ -12BS	↑ -3126	↑ -12B	↑ -6123	↑ -12APBS	12		
↑ -9106	↑ -10BGS2	↑ -0107	↑ -10BGS	↑ -0101	↑ -10BS	↑ -3106	↑ -10B	↑ -6103	↑ -10APBS	10		
↑ -9086	↑ -08BGS2	↑ -0087	↑ -08BGS	↑ -0081	↑ -08BS	↑ -3086	↑ -08B	↑ -6083	↑ -08APBS	8		
↑ -9066	↑ -06BGS2	↑ -0067	↑ -06BGS	↑ -0061	↑ -06BS	↑ -3066	↑ -06B	↑ -6063	↑ -06APBS	6		
↓ -9046	↓ -04BGS2	↓ -0047	↓ -04BGS	↓ -0041	↓ -04BS	↓ -3046	↓ -04B	↓ -6043	↓ -04APBS	4		
39-30-9026	5566-02BGS2	39-31-0027	5566-02BGS	39-31-0021	5566-02BS	39-29-3026	5566-02B	39-30-6023	5566-02APBS	2		
EDP NO.	ENG. NO.	EDP NO.	ENG. NO.	EDP NO.	ENG. NO.	EDP NO.	ENG. NO.	EDP NO.	ENG. NO.	EDP NO.	ENG. NO.	CKT. SIZE
5566-NBGS2		5566-NBGS		5566-NBS		5566-NB		5566-NAPBS				
39-31-0245	5566-24BPBS	39-31-0243	5566-24BPB	39-31-0246	5566-24BPBS-210	39-31-0244	5566-24BPB-210	39-31-0244	5566-24BPB-210	24		
↑ -0225	↑ -22BPBS	↑ -0223	↑ -22BPB	↑ -0226	↑ -22BPBS-210	↑ -0224	↑ -22BPB-210	↑ -0224	↑ -22BPB-210	22		
↑ -0205	↑ -20BPBS	↑ -0203	↑ -20BPB	↑ -0206	↑ -20BPBS-210	↑ -0204	↑ -20BPB-210	↑ -0204	↑ -20BPB-210	20		
↑ -0185	↑ -18BPBS	↑ -0183	↑ -18BPB	↑ -0186	↑ -18BPBS-210	↑ -0184	↑ -18BPB-210	↑ -0184	↑ -18BPB-210	18		
↑ -0165	↑ -16BPBS	↑ -0163	↑ -16BPB	↑ -0166	↑ -16BPBS-210	↑ -0164	↑ -16BPB-210	↑ -0164	↑ -16BPB-210	16		
↑ -0145	↑ -14BPBS	↑ -0143	↑ -14BPB	↑ -0146	↑ -14BPBS-210	↑ -0144	↑ -14BPB-210	↑ -0144	↑ -14BPB-210	14		
↑ -0125	↑ -12BPBS	↑ -0123	↑ -12BPB	↑ -0126	↑ -12BPBS-210	↑ -0124	↑ -12BPB-210	↑ -0124	↑ -12BPB-210	12		
↑ -0105	↑ -10BPBS	↑ -0103	↑ -10BPB	↑ -0106	↑ -10BPBS-210	↑ -0104	↑ -10BPB-210	↑ -0104	↑ -10BPB-210	10		
↑ -0085	↑ -08BPBS	↑ -0083	↑ -08BPB	↑ -0086	↑ -08BPBS-210	↑ -0084	↑ -08BPB-210	↑ -0084	↑ -08BPB-210	8		
↑ -0065	↑ -06BPBS	↑ -0063	↑ -06BPB	↑ -0066	↑ -06BPBS-210	↑ -0064	↑ -06BPB-210	↑ -0064	↑ -06BPB-210	6		
↓ -0045	↓ -04BPBS	↓ -0043	↓ -04BPB	↓ -0046	↓ -04BPBS-210	↓ -0044	↓ -04BPB-210	↓ -0044	↓ -04BPB-210	4		
39-31-0025	5566-02BPBS	39-31-0023	5566-02BPB	39-31-0026	5566-02BPBS-210	39-31-0024	5566-02BPB-210	39-31-0024	5566-02BPB-210	2		
EDP NO.	ENG. NO.	EDP NO.	ENG. NO.	EDP NO.	ENG. NO.	EDP NO.	ENG. NO.	EDP NO.	ENG. NO.	EDP NO.	ENG. NO.	CKT. SIZE
5566-NBPBS		5566-NBPB		5566-NBPBS-210		5566-NBPB-210						

PARTS WITH DRAIN HOLES

SEE SHEET 1 EC NO: UCP2014-212 2013/11/13 DRAWING CHKO: BELL 2013/11/13 APPROV: SMITH 2013/11/13 DESCRIPTION L7 REV	QUALITY SYMBOLS	GENERAL TOLERANCES (UNLESS SPECIFIED)	DIMENSION STYLE	SCALE	DESIGN UNITS	THIRD ANGLE PROJECTION
	▽=0	mm INCH	IN/MM	1:1	METRIC	
	▽=0	4 PLACES ± --- ± ---	DRAWN BY DATE			
	▽=0	3 PLACES ± --- ± .005	H.HIRAMOTO '89/04/03			
	2 PLACES ± .13 ± .010	CHECKED BY DATE				TITLE
	1 PLACE ± .25 ± ---	M.FUKUSHIMA '94/04/20				MINI FIT JR VERTICAL HEADER ASSEMBLIES WITHOUT PEGS
	ANGULAR ± 3°	APPROVED BY DATE				MOLEX INCORPORATED
		FSMITH 2012/05/04				
		MATERIAL NO.				DOCUMENT NO.
		SEE TABLE				SD-5566-002
		DRAFT WHERE APPLICABLE MUST REMAIN WITHIN DIMENSIONS				SHEET NO. 3 OF 5
						THIS DRAWING CONTAINS INFORMATION THAT IS PROPRIETARY TO MOLEX INCORPORATED AND SHOULD NOT BE USED WITHOUT WRITTEN PERMISSION

[TRAY PACKED PART NUMBERS]

PARTS WITHOUT DRAIN HOLES					39-53-9249	5566-24A-210-TA	39-53-9248	5566-24A-TA	24
						-22A-210-TA	-9228	-22A-TA	22
						-20A-210-TA	-9208	-20A-TA	20
			39-34-1180	5566-18A-210-TR		-18A-210-TA	-9188	-18A-TA	18
						-16A-210-TA	-9168	-16A-TA	16
						-14A-210-TA	-9148	-14A-TA	14
						-12A-210-TA	-9128	-12A-TA	12
						-10A-210-TA	-9108	-10A-TA	10
						-08A-210-TA	-9088	-08A-TA	8
		46999-0630	5566-06AGS2-BL-TA			-06A-210-TA	-9068	-06A-TA	6
	46999-0629	5566-04AGS2-BL-TA			-04A-210-TA	-9048	-04A-TA	4	
	EDP NO.	ENG. NO.	EDP NO.	ENG. NO.	EDP NO.	ENG. NO.	EDP NO.	ENG. NO.	CKT. SIZE
	5566-NAGS2-BL-TA		5566-NA-210-TR		5566-NA-210-TA		5566-NA-TA		

SEE SHEET 1 EC NO: UCP204-212 DRAWING NO: 2013/11/13 CHKD: BELL APPR: SMITH	L7	QUALITY SYMBOLS	DESCRIPTION	GENERAL TOLERANCES (UNLESS SPECIFIED)		DIMENSION STYLE		SCALE	DESIGN UNITS	THIRD ANGLE PROJECTION
				mm	INCH	IN/MM		1:1	METRIC	
				4 PLACES ± ---	± ---	DRAWN BY	DATE	TITLE MINI FIT JR VERTICAL HEADER ASSEMBLIES WITHOUT PEGS		
				3 PLACES ± ---	± .005	H.HIRAMOTO	'89/04/03			
2 PLACES ± 13	± .010	CHECKED BY	DATE	MOLEX INCORPORATED						
1 PLACE ± 25	± ---	M.FUKUSHIMA	'94/04/20							
ANGULAR ± 3°				APPROVED BY	DATE	MATERIAL NO.		DOCUMENT NO.	SHEET NO.	
				FSMITH	2012/05/04			SD-5566-002	5 OF 5	
DRAFT WHERE APPLICABLE MUST REMAIN WITHIN DIMENSIONS				SEE TABLE		THIS DRAWING CONTAINS INFORMATION THAT IS PROPRIETARY TO MOLEX INCORPORATED AND SHOULD NOT BE USED WITHOUT WRITTEN PERMISSION				