

## **Excellent Integrated System Limited**

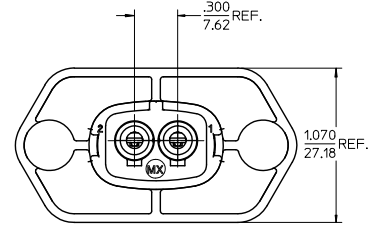
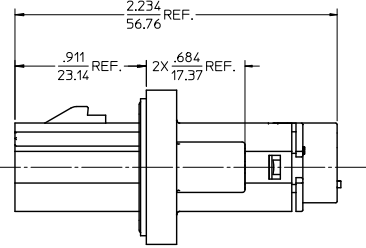
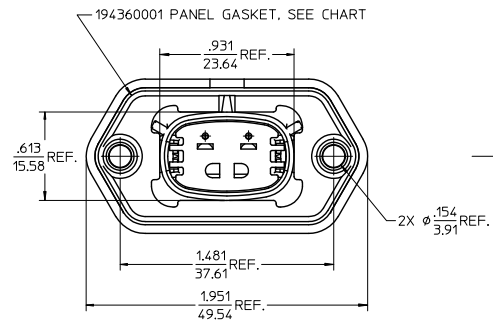
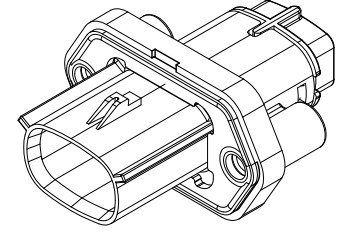
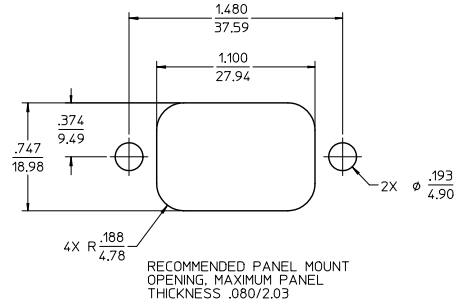
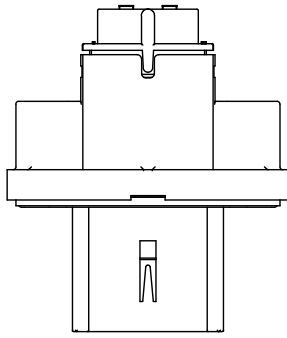
Stocking Distributor

Click to view price, real time Inventory, Delivery & Lifecycle Information:

[Molex Connector Corporation](#)  
[19436-0213](#)

For any questions, you can email us directly:  
[sales@integrated-circuit.com](mailto:sales@integrated-circuit.com)

13 12 11 10 9 8 7 6 5 4 3 2 1



**NOTES:**

1. MATERIALS:  
HOUSING: POLYESTER (PBT), GLASS FILLED, UL94 V-0,  
COLOR: BLACK  
TERMINALS: COPPER ALLOY  
GASKET: EPDM RUBBER
2. PRODUCT SPECIFICATION: PS-19432-001
3. PACKAGING SPECIFICATION: PK-19436-001  
GASKETS, IF REQUIRED FOR THE ASSEMBLIES,  
ARE BULK PACKAGED IN A SEPARATE BAG. ©
4. USE WITH MALE CRIMP TERMINAL SERIES 19431.
5. MATES WITH 19432 SERIES RECEPTACLE ASSEMBLIES.
6. RECOMMENDED MOUNTING HARDWARE: (2)±10 X .62/15.8 LONG PLASTIC  
THREAD CUTTING SCREWS, RECOMMENDED TORQUE 15-17 IN.-LBS.  
SUGGESTED SOURCE: ITW SHAKEPROOF INDUSTRIAL BOSSCREW  
OR EQUIVALENT.
7. ASSEMBLY IS ROHS COMPLIANT.

19436-0214	8	YES
19436-0213	12-10	
19436-0212	8	NO
19436-0211	12-10	
MATERIAL NUMBER	WIRE AWG	PANEL GASKET

UPDATE GASKET MATL & GASKET PKG EC NO: 1F62012-0303 DRW: MWLEUNG 2012/02/28 CHKD: APPROJIT IUS 2012/02/28 REV:	QUALITY SYMBOLS	GENERAL TOLERANCES (UNLESS SPECIFIED)	DIMENSION STYLE	SCALE	DESIGN UNITS	THIRD ANGLE PROJECTION
	▽=0 ▽=0	mm INCH 4 PLACES ± --- ± --- 3 PLACES ± --- ± .015 2 PLACES ± 0.38 ± --- 1 PLACE ± --- ± --- ANGULAR ± 1 °	IN/MM	2:1	INCH	<input checked="" type="checkbox"/>
			DRAWN BY DATE JPAWL I CK I 01/08/07 CHECKED BY DATE JPAWL I CK I 01/09/07 APPROVED BY DATE JPAWL I CK I 01/10/07			TITLE 2 WAY SEALED PLUG PANEL MOUNT ASSEMBLY, 12-10 & 8 AWG
		DRAFT WHERE APPLICABLE MUST REMAIN WITHIN DIMENSIONS	SEE CHART	MATERIAL NO. SD-19436-001 DOCUMENT NO.	MOLEX INCORPORATED	SHEET NO. 1 OF 1

THIS DRAWING CONTAINS INFORMATION THAT IS PROPRIETARY TO MOLEX INCORPORATED AND SHOULD NOT BE USED WITHOUT WRITTEN PERMISSION