

Excellent Integrated System Limited

Stocking Distributor

Click to view price, real time Inventory, Delivery & Lifecycle Information:

[MEC Switches](#)
[4FSH901](#)

For any questions, you can email us directly:
sales@integrated-circuit.com

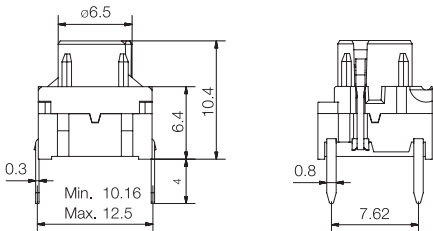
multimec[®] illumec[™] 4F

Technical Data

- through-hole or SMD
- 50mA/24VDC
- single pole/momentary
- 10.000.000 operations life time
- IP67 sealing
- temperature range:
 high temp. switch; -40/+160°C
 LED: -30/+85°C

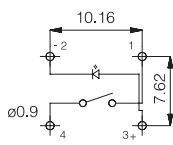


Dimensions (through-hole)

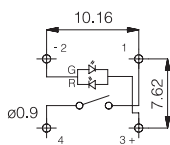


PCB layout and Circuit Diagram

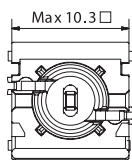
1 LED



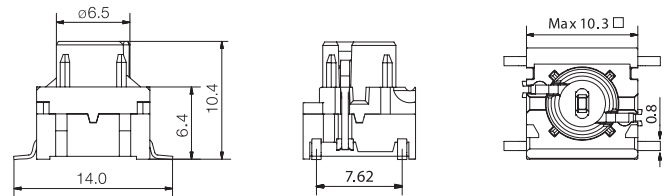
2 LEDS



Top View

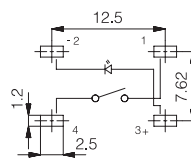


Dimensions (SMD)

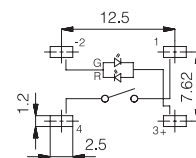


PCB layout and Circuit Diagram

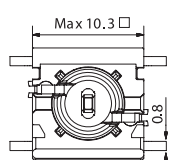
1 LED



2 LEDS

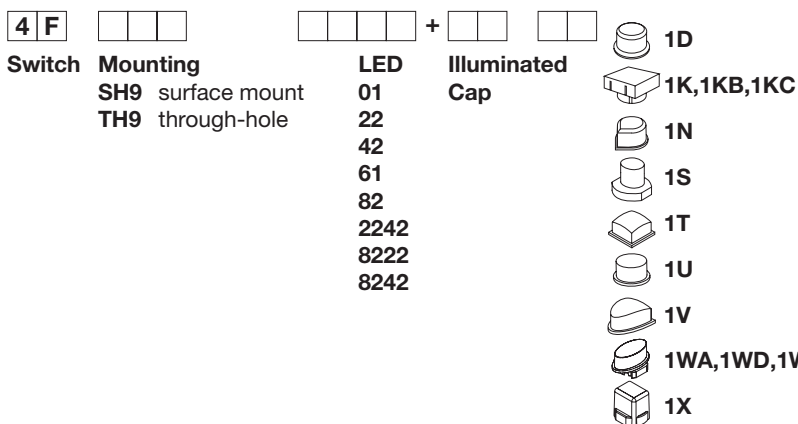


Top View



Technical specifications for 4F switch and LEDs see pages 35 and 36

How to order



Colour code

11,16	[][]	[][][]	
11,16	Cap	Solid Colour	Illuminated Lens
10,12,14,16,18		1E Solid Colour + lens 1,2,4,6,8	
11		1F Solid Colour + lens 1,2,4,6,8	
16		1Q Solid Colour + lens 1,6	
16		1R Solid Colour + lens 1,6	
16			
16			
11			

Colour codes

LEDs	Illuminated Caps	Lenses	Solid Colours	Dimensions	
01 blue	10 frosted blue	1 transparent	1E,1F	Caps	See Page
22 green	11 transparent	2 green	00 blue	1D,1E,1F	15
42 yellow	12 frosted green	4 yellow	02 green	1K,1KB,1KC	16
61 white	14 frosted yellow	6 frosted white	03 grey	1N	14
82 red	16 frosted white	8 red	08 red	1Q,1R	18
2242 green/yellow	18 frosted red		09 black	1S	21
8222 red/green			06 white	1T,1U,1V	19
8242 red/yellow			08 red	1WA,1WD,1WP	17
			09 black	1X	20

Ordering example: 4FSH98242 + 1D11 or 4FTH922 + 1T16