

Excellent Integrated System Limited

Stocking Distributor

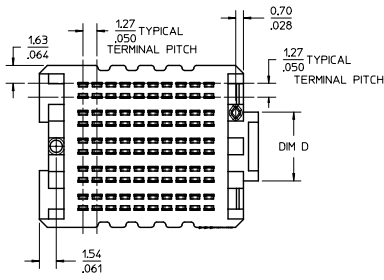
Click to view price, real time Inventory, Delivery & Lifecycle Information:

[Molex Connector Corporation](#)
[45971-3515](#)

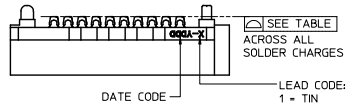
For any questions, you can email us directly:

sales@integrated-circuit.com

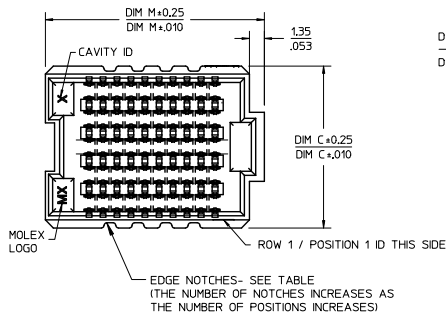
10 9 8 7 6 5 4 3 2 1



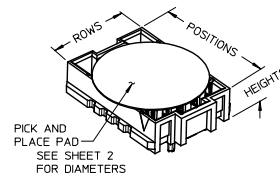
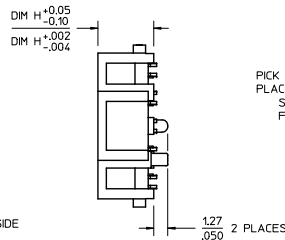
10 ROW
10 POSITION
SHOWN



NOTE: THESE CODES MAY BE LOCATED ON EITHER SIDE OF THE HOUSING



SEE SHEET 3 FOR
6 ROW GEOMETRY



NOTES:

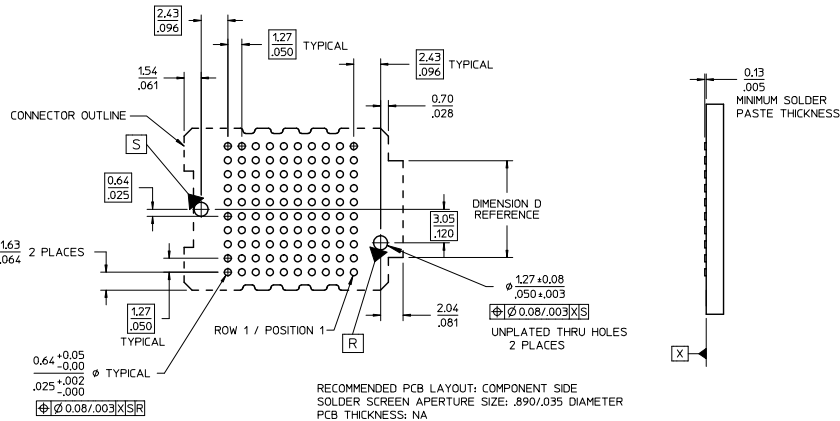
1. MATERIALS: HOUSING: GLASS FILLED LCP (LIQUID CRYSTAL POLYMER), UL94V-0, BLACK
CONTACTS: COPPER ALLOY
SOLDER CHARGE: 95% TIN, 3.8% SILVER, 0.7% COPPER
2. FINISH: SELECT GOLD IN CONTACT AREA: 30 MICROINCH MINIMUM
SELECT TIN IN TAIL, 50 MICROINCH MINIMUM
OVERALL NICKEL UNDERPLATE
3. PRODUCT SPECIFICATION: PS-45970-001
4. PACKAGING SPECIFICATION: PK-45971-002 (TAPE AND REEL)
5. MATES WITH SEARAY PLUG ASSEMBLY SERIES 45970
6. APPLICATION SPECIFICATION: AS-45970-001
7. COSMETIC SPECIFICATION: PS-45499-002 CLASS B
8. PART STATUS: CONTACT MOLEX

POSITIONS	TOTAL NUMBER OF EDGE NOTCHES	
10	8	0.15/.006
15	14	
20	18	
25	24	
30	28	
35	34	0.23/.009
40	38	
45	44	
50	48	

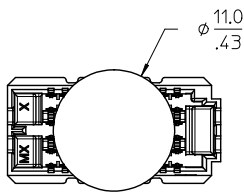
CLARIFY OVERALL LENGTH				QUALITY SYMBOLS	GENERAL TOLERANCES (UNLESS SPECIFIED)	DIMENSION STYLE MM/IN	SCALE 3:1	DESIGN UNITS INCH	THIRD ANGLE PROJECTION	SHEET NO. 1 OF 4
EC NO:	UCP2015-5493	2015/04/25	2015/08/04							
DRWNSVANG01				▽=0	4 PLACES ± --- ± ---	mm INCH	DRAWN BY TGREGOR I	DATE 2005/05/17	SEARAY RECEPTACLE ASSEMBLY 1.27/.050 CENTERS molex	DOCUMENT NO. SD-45971-001
CHKD:TBARRA				▽=0	3 PLACES ± --- ± .010		CHECKED BY JCOMERC I	DATE 2005/05/17		
APPR:SMILLER				▽=0	2 PLACES ± 0.25 ± .015		APPROVED BY JCOMERC I	DATE 2010/03/05		
					1 PLACE ± 0.38 ± ---					
					0 PLACE ± ±					
					ANGULAR ± --- °					
					DRAFT WHERE APPLICABLE MUST REMAIN WITHIN DIMENSIONS					

9 8 7 6 5 4 3 2 1

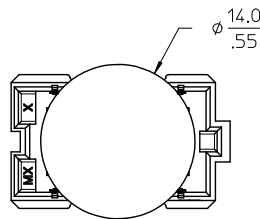
10 ROW
10 POSITION
SHOWN



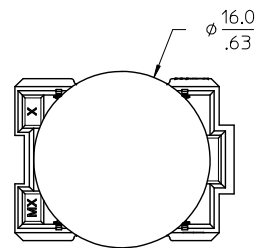
NUMBER OF ROWS	DIMENSION D
6	SEE SHEET 3
8	3.70/.146
10	6.24/.246



6 ROW OPTION



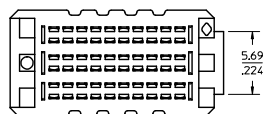
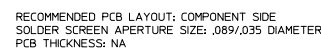
8 ROW OPTION





10 ROW OPTION

PICK AND PLACE
PAD DIAMETERS
10 POSITION VERSIONS SHOWN

SEE SHEET 1 EC NO: UCP2015-5/93 DRAWN BY: DRWNSYANG01 CHKD: TIBARRA APPR: SMILLER REV: X	DESCRIPTION	QUALITY SYMBOLS	GENERAL TOLERANCES (UNLESS SPECIFIED)		DIMENSION STYLE		SCALE	DESIGN UNITS	THIRD ANGLE PROJECTION		
					MM/IN		3:1	INCH			
		▽=0	4 PLACES ± .005 ± .005	DRAWN BY	DATE	TITLE SEARAY RECEPTACLE ASSEMBLY 1.27/.050 CENTERS molex DOCUMENT NO. SD-45971-001					
		▽=0	3 PLACES ± .010 ± .010	CHECKED BY	DATE						
		▽=0	2 PLACES ± .025 ± .015	JCOMERC I	2005/05/17						
			1 PLACE ± 0.38 ± .015	APPROVED BY	DATE						
			0 PLACE ± ±	JCOMERC I	2010/03/05						
		ANGULAR ± .005°		MATERIAL NO.		SHEET NO.					
		DRAFT WHERE APPLICABLE MUST REMAIN WITHIN DIMENSIONS		SEE TABLES SHT 4		2 OF 4					
				SIZE B		THIS DRAWING CONTAINS INFORMATION THAT IS PROPRIETARY TO MOLEX INCORPORATED AND SHOULD NOT BE USED WITHOUT WRITTEN PERMISSION					

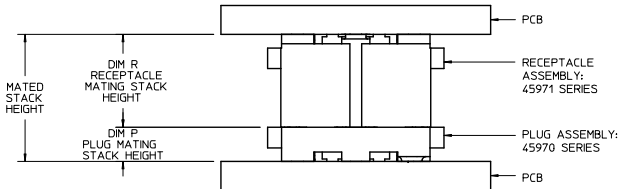


SEE SHEET 1 EC NO. UCP2015-5493 DRAWING: VANG001 CHKD: T. BARRA APPR: SCHILLER 2015/06/25 2015/08/04 2015/08/07	DESCRIPTION QUALITY SYMBOLS ▽=0 ▽=0 ▽=0	GENERAL TOLERANCES (UNLESS SPECIFIED)			DIMENSION STYLE MM/IN		SCALE 3:1	DESIGN UNITS INCH	 THIRD ANGLE PROJECTION	
			mm	INCH	DRAWN BY T.GREGORI	DATE 2005/05/17	TITLE SEARAY RECEPTACLE ASSEMBLY 1.27/.050 CENTERS			
		4 PLACES	± .---	± .---	CHECKED BY J.COMERC I	DATE 2005/05/17				
		3 PLACES	± .---	± .010	APPROVED BY J.COMERC I	DATE 2010/03/05				
ANGULAR ± .---			MATERIAL NO.		DOCUMENT NO.		SHEET NO.			
DRAFT WHERE APPLICABLE MUST REMAIN WITHIN DIMENSIONS			SEE TABLES SHT 4		SD-45971-001			3 OF 4		
REV 1	SIZE B	THIS DRAWING CONTAINS INFORMATION THAT IS PROPRIETARY TO MOLEX INCORPORATED AND SHOULD NOT BE USED WITHOUT WRITTEN PERMISSION								

10 9 8 7 6 5 4 3 2 1

ROWS: 6 DIMENSION C = 9.60/.378 DIMENSION D = 5.69/.224					
DIM R: (REF)	5.0 MM	6.0 MM	6.5 MM	7.5 MM	8.0 MM
DIM H:	5.05/199	6.04/238	6.66/258	7.54/297	8.05/317
POSITION	DIM M	MATERIAL NO	MATERIAL NO	MATERIAL NO	MATERIAL NO
10	19.35/0.762	45971-1165	45971-1265	45971-1365	45971-1465
20	32.05/1.262	45971-2165	45971-2265	45971-2365	45971-2465
30	44.75/1.762	45971-3165	45971-3265	45971-3365	45971-3465
40	57.45/2.262	45971-4165	45971-4265	45971-4365	45971-4465
50	70.15/2.762	45971-5165	45971-5265	45971-5365	45971-5465
15	25.70/1.012	45971-6165	45971-6265	45971-6365	45971-6465
25	38.40/1.512	45971-7165	45971-7265	45971-7365	45971-7465
35	51.10/2.012	45971-8165	45971-8265	45971-8365	45971-8465
45	63.80/2.512	45971-9165	45971-9265	45971-9365	45971-9465

ROWS: 10 DIMENSION C = 14.68/.578 DIMENSION D = 6.24/.246					
DIM R: (REF)	5.0 MM	6.0 MM	6.5 MM	7.5 MM	8.0 MM
DIM H:	5.05/199	6.04/238	6.66/258	7.54/297	8.05/317
POSITION	DIM M	MATERIAL NO	MATERIAL NO	MATERIAL NO	MATERIAL NO
10	19.88/0.784	45971-1115	45971-1215	45971-1315	45971-1415
20	32.58/1.284	45971-2115	45971-2215	45971-2315	45971-2415
30	45.28/1.784	45971-3115	45971-3215	45971-3315	45971-3415
40	57.98/2.284	45971-4115	45971-4215	45971-4315	45971-4415
50	70.68/2.784	45971-5115	45971-5215	45971-5315	45971-5415
15	26.23/1.034	45971-6115	45971-6215	45971-6315	45971-6415
25	38.93/1.534	45971-7115	45971-7215	45971-7315	45971-7415
35	51.63/2.034	45971-8115	45971-8215	45971-8315	45971-8415
45	64.33/2.534	45971-9115	45971-9215	45971-9315	45971-9415




STACK HEIGHTS
GIVEN IN MILLIMETERS (MM) FOR REFERENCE ONLY

ROWS: 8 DIMENSION C = 12.14/.478 DIMENSION D = 3.70/.146					
DIM R: (REF)	5.0 MM	6.0 MM	6.5 MM	7.5 MM	8.0 MM
DIM H:	5.05/199	6.04/238	6.66/258	7.54/297	8.05/317
POSITION	DIM M	MATERIAL NO	MATERIAL NO	MATERIAL NO	MATERIAL NO
10	19.88/0.784	45971-1185	45971-1285	45971-1385	45971-1485
20	32.58/1.284	45971-2185	45971-2285	45971-2385	45971-2485
30	45.28/1.784	45971-3185	45971-3285	45971-3385	45971-3485
40	57.98/2.284	45971-4185	45971-4285	45971-4385	45971-4485
50	70.68/2.784	45971-5185	45971-5285	45971-5385	45971-5485
15	26.23/1.034	45971-6185	45971-6285	45971-6385	45971-6485
25	38.93/1.534	45971-7185	45971-7285	45971-7385	45971-7485
35	51.63/2.034	45971-8185	45971-8285	45971-8385	45971-8485
45	64.33/2.534	45971-9185	45971-9285	45971-9385	45971-9485

MATING STACK HEIGHTS (DIMENSION R)
GIVEN IN MILLIMETERS (MM) FOR REFERENCE ONLY

DIM R RECEPTACLE STACK HEIGHT					
MM	5.0	6.0	6.5	7.5	8.0
2.0	7.0	8.0	8.5	9.5	10.0
3.0	8.0	9.0	9.5	10.5	11.0
3.5	8.5	9.5	10.0	11.0	11.5
2.5	7.5	8.5	9.0	10.0	10.5
4.5	9.5	10.5	11.0	12.0	12.5
5.0	10.0	11.0	11.5	12.5	13.0
7.0	12.0	13.0	13.5	14.5	15.0

MATED STACK HEIGHTS
GIVEN IN MILLIMETERS (MM) FOR REFERENCE ONLY

SEE SHEET 1 EC NO: UCP2015-5493 DRAWN BY: DRWISVANG01 CHKD BY: CHKDT BARRA APPR:SMILLER 2015/06/25 2015/08/04 2015/08/07	QUALITY SYMBOLS ▽=0 ▽=0 ▽=0	DESCRIPTION	GENERAL TOLERANCES (UNLESS SPECIFIED)		DIMENSION STYLE		SCALE	DESIGN UNITS	 THIRD ANGLE PROJECTION				
				mm	INCH	MM/IN	DATE	1:1		INCH			
			4 PLACES ± ---	± ---	DRAWN BY	2005/05/17	TITLE SEARAY RECEPTACLE ASSEMBLY 1.27/.050 CENTERS molex						
			3 PLACES ± ---	± .010	CHECKED BY	DATE							
			2 PLACES ± 0.25	± .015	JCOMERC I	2005/05/17	DOCUMENT NO. SD-45971-001						
			1 PLACE ± 0.38	± ---	APPROVED BY	DATE							
			0 PLACE ± ±	± ---	JCOMERC I	2010/03/05				SHEET NO. 4 OF 4			
			ANGULAR ± ---		MATERIAL NO.		THIS DRAWING CONTAINS INFORMATION THAT IS PROPRIETARY TO MOLEX INCORPORATED AND SHOULD NOT BE USED WITHOUT WRITTEN PERMISSION						
			DRAFT WHERE APPLICABLE MUST REMAIN WITHIN DIMENSIONS		SEE TABLES								

9 8 7 6 5 4 3 2 1