

Excellent Integrated System Limited

Stocking Distributor

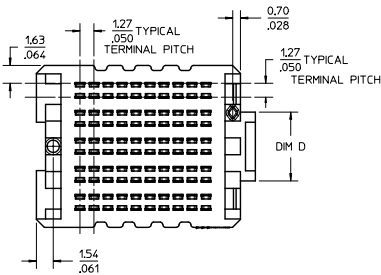
Click to view price, real time Inventory, Delivery & Lifecycle Information:

[Molex Connector Corporation](#)
[45971-5115](#)

For any questions, you can email us directly:

sales@integrated-circuit.com

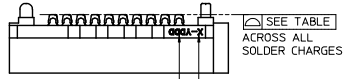
10 9 8 7 6 5 4 3 2 1



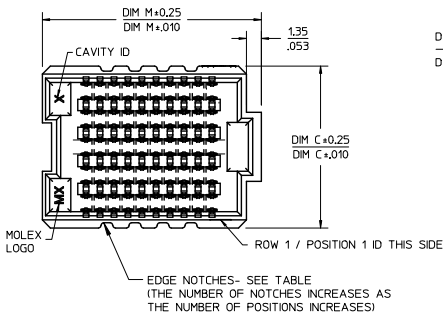
10 ROW
10 POSITION
SHOWN

NOTES:

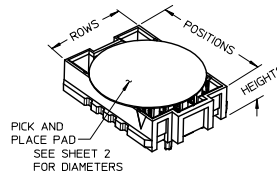
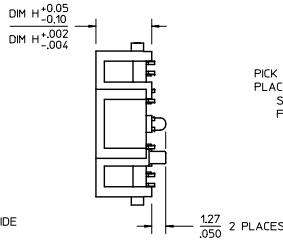
- MATERIALS: HOUSING: GLASS FILLED LCP (LIQUID CRYSTAL POLYMER), UL94V-0, BLACK
CONTACTS: COPPER ALLOY
SOLDER CHARGE: 95% TIN, 3.8% SILVER, 0.7% COPPER
- FINISH: SELECT GOLD IN CONTACT AREA: 30 MICROINCH MINIMUM
SELECT TIN IN TAIL, 50 MICROINCH MINIMUM
OVERALL NICKEL UNDERPLATE
- PRODUCT SPECIFICATION: PS-45970-001
- PACKAGING SPECIFICATION: PK-45971-002 (TAPE AND REEL)
- MATES WITH SEARAY PLUG ASSEMBLY SERIES 45970
- APPLICATION SPECIFICATION: AS-45970-001
- COSMETIC SPECIFICATION: PS-45499-002 CLASS B
- PART STATUS: CONTACT MOLEX



NOTE: THESE CODES MAY BE LOCATED ON EITHER SIDE OF THE HOUSING



SEE SHEET 3 FOR
6 ROW GEOMETRY



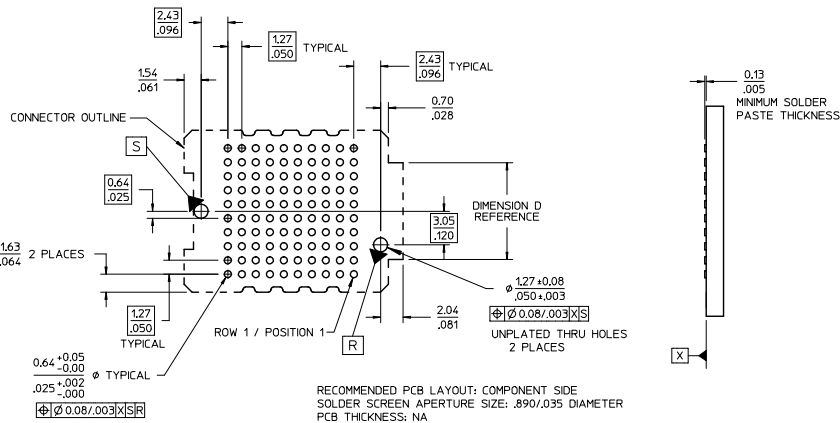
POSITIONS	TOTAL NUMBER OF EDGE NOTCHES	
10	8	0.15/.006
15	14	
20	18	
25	24	
30	28	0.23/.009
35	34	
40	38	
45	44	
50	48	

CLARIFY OVERALL LENGTH EC NO: ICP/2015-5/93 2015/06/25 DRAWNS: VANG01 CHKD: TBARRA 2015/08/04 APPR: SKILLER 2015/08/07	QUALITY SYMBOLS ▽=0 ▽=0 ▽=0	GENERAL TOLERANCES (UNLESS SPECIFIED)		DIMENSION STYLE		SCALE 3:1	DESIGN UNITS INCH	THIRD ANGLE PROJECTION
		mm	INCH	MM/IN	DATE			
DRAWN BY: T.GREGOR I CHECKED BY: J.COMERC I APPROVED BY: J.COMERC I	4 PLACES	± .010	± .010	DATE	2005/05/17	TITLE SEARAY RECEPTACLE ASSEMBLY 1.27/.050 CENTERS molex	DOCUMENT NO. SD-45971-001	SHEET NO. 1 OF 4
	3 PLACES	± .010	± .010	DATE	2005/05/17			
	2 PLACES	± 0.25	± .015	DATE	2010/03/05			
	1 PLACE	± 0.38	± .015	DATE	2010/03/05			
0 PLACE	±	±	DATE	2010/03/05				
ANGULAR ±---°		DRAFT WHERE APPLICABLE MUST REMAIN WITHIN DIMENSIONS		MATERIAL NO. SEE TABLES SHT 4		THIS DRAWING CONTAINS INFORMATION THAT IS PROPRIETARY TO MOLEX INCORPORATED AND SHOULD NOT BE USED WITHOUT WRITTEN PERMISSION		

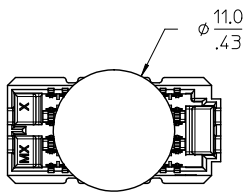
9 8 7 6 5 4 3 2 1

10 9 8 7 6 5 4 3 2 1

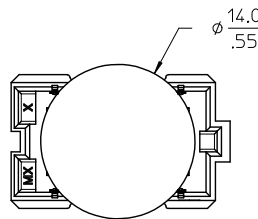
10 ROW
10 POSITION
SHOWN



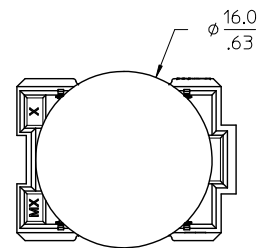
NUMBER OF ROWS	DIMENSION D
6	SEE SHEET 3
8	3.70/.146
10	6.24/.246



6 ROW OPTION



8 ROW OPTION



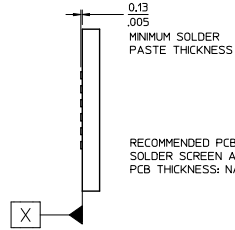
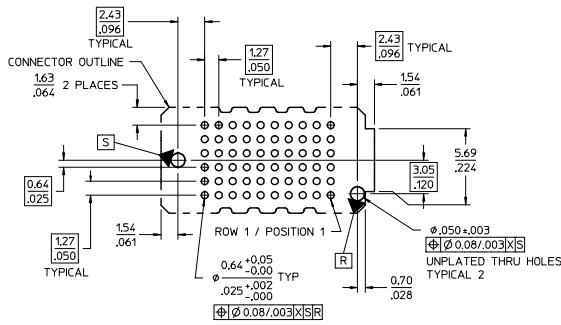
10 ROW OPTION

PICK AND PLACE
PAD DIAMETERS
10 POSITION VERSIONS SHOWN

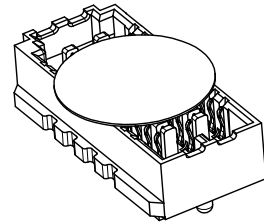
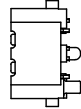
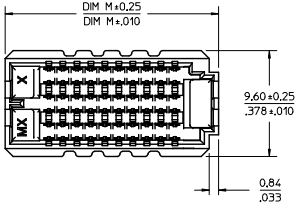
REV	DESCRIPTION	QUALITY SYMBOLS	GENERAL TOLERANCES (UNLESS SPECIFIED)		DIMENSION STYLE		SCALE	DESIGN UNITS	THIRD ANGLE PROJECTION
			mm	INCH	MM/IN	MM/IN			
X	SEE SHEET 1 EC. NO.: IUCP2015-5/93 DRAWN: VANG01 2015/06/25 CHKD: TIBARRA 2015/08/04 APPR: SMILLER 2015/08/07	$\nabla=0$ $\nabla=0$ $\nabla=0$	4 PLACES ± ---	± ---	TGREGOR I	DATE 2005/05/17	3:1	INCH	
			3 PLACES ± ---	± .010	CHECKED BY JCOMERC I	DATE 2005/05/17			
			2 PLACES ± 0.25	± .015	APPROVED BY JCOMERC I	DATE 2010/03/05			
			1 PLACE ± 0.38	± ---					
			0 PLACE ±	±					
			ANGULAR ± ---°		MATERIAL NO. SEE TABLES SHT 4		DOCUMENT NO. SD-45971-001		SHEET NO. 2 OF 4
			DRAFT WHERE APPLICABLE MUST REMAIN WITHIN DIMENSIONS		SIZE B		THIS DRAWING CONTAINS INFORMATION THAT IS PROPRIETARY TO MOLEX INCORPORATED AND SHOULD NOT BE USED WITHOUT WRITTEN PERMISSION		

9 8 7 6 5 4 3 2 1

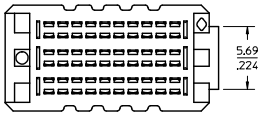
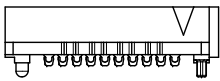
6 ROW
10 POSITION



RECOMMENDED PCB LAYOUT: COMPONENT SIDE
SOLDER SCREEN APERTURE SIZE: .089/.035 DIAMETER
PCB THICKNESS: NA



6 ROW
10 POSITION
SHOWN

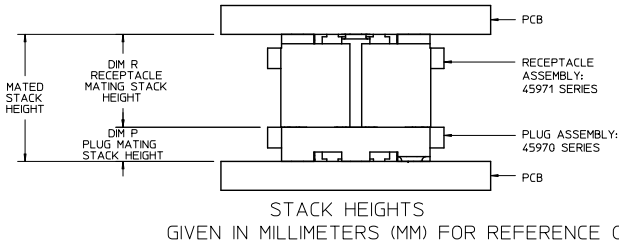


SEE SHEET 1 EC NO: UCP2015-5493 DRWNSVANG01 2015/04/25 CHKDT IBARRA 2015/08/04 APPRSMILLER 2015/08/07 REV	QUALITY SYMBOLS	GENERAL TOLERANCES (UNLESS SPECIFIED)		DIMENSION STYLE		SCALE	DESIGN UNITS	THIRD ANGLE PROJECTION
	▽=0	mm	INCH	MM/IN		3:1	INCH	
	▽=0	4 PLACES ±	---	---	DRAWN BY	DATE	TITLE	
	▽=0	3 PLACES ±	---	±.010	TGREGOR I	2005/05/17	SEARAY RECEPTACLE ASSEMBLY 1.27/.050 CENTERS	
		2 PLACES ±	0.25	±.015	CHECKED BY	DATE	molex	
		1 PLACE ±	0.38	---	JCOMERC I	2005/05/17	DOCUMENT NO.	
		0 PLACE ±	---	---	APPROVED BY	DATE	SD-45971-001	
			ANGULAR ±---°		JCOMERC I	2010/03/05	SHEET NO.	
			DRAFT WHERE APPLICABLE MUST REMAIN WITHIN DIMENSIONS		MATERIAL NO.	SEE TABLES SHT 4	3 OF 4	
					SIZE	B	THIS DRAWING CONTAINS INFORMATION THAT IS PROPRIETARY TO MOLEX INCORPORATED AND SHOULD NOT BE USED WITHOUT WRITTEN PERMISSION	

10 9 8 7 6 5 4 3 2 1

ROWS: 6 DIMENSION C = 9.60/378 DIMENSION D = 5.69/224					
DIM R: (REF)	5.0 MM	6.0 MM	6.5 MM	7.5 MM	8.0 MM
DIM H:	5.05/199	6.04/238	6.66/258	7.54/297	8.05/317
POSITION	DIM M	MATERIAL NO	MATERIAL NO	MATERIAL NO	MATERIAL NO
10	19.35/0.762	45971-1165	45971-1265	45971-1365	45971-1465
20	32.05/1.262	45971-2165	45971-2265	45971-2365	45971-2465
30	44.75/1.762	45971-3165	45971-3265	45971-3365	45971-3465
40	57.45/2.262	45971-4165	45971-4265	45971-4365	45971-4465
50	70.15/2.762	45971-5165	45971-5265	45971-5365	45971-5465
15	25.70/1.012	45971-6165	45971-6265	45971-6365	45971-6465
25	38.40/1.512	45971-7165	45971-7265	45971-7365	45971-7465
35	51.10/2.012	45971-8165	45971-8265	45971-8365	45971-8465
45	63.80/2.512	45971-9165	45971-9265	45971-9365	45971-9465

ROWS: 10 DIMENSION C = 14.68/578 DIMENSION D = 6.24/246					
DIM R: (REF)	5.0 MM	6.0 MM	6.5 MM	7.5 MM	8.0 MM
DIM H:	5.05/199	6.04/238	6.66/258	7.54/297	8.05/317
POSITION	DIM M	MATERIAL NO	MATERIAL NO	MATERIAL NO	MATERIAL NO
10	19.88/0.784	45971-1115	45971-1215	45971-1315	45971-1415
20	32.58/1.284	45971-2115	45971-2215	45971-2315	45971-2415
30	45.28/1.784	45971-3115	45971-3215	45971-3315	45971-3415
40	57.98/2.284	45971-4115	45971-4215	45971-4315	45971-4415
50	70.68/2.784	45971-5115	45971-5215	45971-5315	45971-5415
15	26.23/1.034	45971-6115	45971-6215	45971-6315	45971-6415
25	38.93/1.534	45971-7115	45971-7215	45971-7315	45971-7415
35	51.63/2.034	45971-8115	45971-8215	45971-8315	45971-8415
45	64.33/2.534	45971-9115	45971-9215	45971-9315	45971-9415



STACK HEIGHTS GIVEN IN MILLIMETERS (MM) FOR REFERENCE ONLY

ROWS: 8 DIMENSION C = 12.14/478 DIMENSION D = 3.70/146					
DIM R: (REF)	5.0 MM	6.0 MM	6.5 MM	7.5 MM	8.0 MM
DIM H:	5.05/199	6.04/238	6.66/258	7.54/297	8.05/317
POSITION	DIM M	MATERIAL NO	MATERIAL NO	MATERIAL NO	MATERIAL NO
10	19.88/0.784	45971-1185	45971-1285	45971-1385	45971-1485
20	32.58/1.284	45971-2185	45971-2285	45971-2385	45971-2485
30	45.28/1.784	45971-3185	45971-3285	45971-3385	45971-3485
40	57.98/2.284	45971-4185	45971-4285	45971-4385	45971-4485
50	70.68/2.784	45971-5185	45971-5285	45971-5385	45971-5485
15	26.23/1.034	45971-6185	45971-6285	45971-6385	45971-6485
25	38.93/1.534	45971-7185	45971-7285	45971-7385	45971-7485
35	51.63/2.034	45971-8185	45971-8285	45971-8385	45971-8485
45	64.33/2.534	45971-9185	45971-9285	45971-9385	45971-9485

MATING STACK HEIGHTS (DIMENSION R) GIVEN IN MILLIMETERS (MM) FOR REFERENCE ONLY

DIM P PLUG STACK HEIGHT	DIM R RECEPTACLE STACK HEIGHT				
	MM	5.0	6.0	6.5	7.5
2.0	7.0	8.0	8.5	9.5	10.0
3.0	8.0	9.0	9.5	10.5	11.0
3.5	8.5	9.5	10.0	11.0	11.5
2.5	7.5	8.5	9.0	10.0	10.5
4.5	9.5	10.5	11.0	12.0	12.5
5.0	10.0	11.0	11.5	12.5	13.0
7.0	12.0	13.0	13.5	14.5	15.0

MATED STACK HEIGHTS GIVEN IN MILLIMETERS (MM) FOR REFERENCE ONLY

SEE SHEET 1 EC NO: LCP2015-5493 DRWNSVANG01 2015/06/25 CHKCDT IBARRA 2015/08/04 APPRSWILLER 2015/08/07	QUALITY SYMBOLS 	GENERAL TOLERANCES (UNLESS SPECIFIED)		DIMENSION STYLE		SCALE	DESIGN UNITS	THIRD ANGLE PROJECTION
				MM/IN		1:1	INCH	
				DRAWN BY DATE		TITLE		
				CHECKED BY DATE		SEARAY RECEPTACLE ASSEMBLY 1.27/050 CENTERS		
		APPROVED BY DATE		MATERIAL NO.		DOCUMENT NO.		
		DRAWN BY DATE		SD-45971-001		SHEET NO.		
		CHECKED BY DATE		SD-45971-001		4 OF 4		
		APPROVED BY DATE		MATERIAL NO.		DOCUMENT NO.		THIS DRAWING CONTAINS INFORMATION THAT IS PROPRIETARY TO MOLEX INCORPORATED AND SHOULD NOT BE USED WITHOUT WRITTEN PERMISSION
		DRAWN BY DATE		SD-45971-001		SHEET NO.		
		CHECKED BY DATE		SD-45971-001		4 OF 4		

9 8 7 6 5 4 3 2 1