

## Excellent Integrated System Limited

Stocking Distributor

Click to view price, real time Inventory, Delivery & Lifecycle Information:

[TE Connectivity AMP Connectors  
3-481552-1](#)

For any questions, you can email us directly:

[sales@integrated-circuit.com](mailto:sales@integrated-circuit.com)

4 3 2 1

NUMERO	ENTRE		N'ENTRE PAS		UTILISATION		
	Y +0,-0.1	X MAX.	R MAX.	Y ±0,005		X MAX.	R MAX.
481552-1	2,959	2,540	1,524	3,111	2,540	1,524	69646
481552-2	4,597	4,572	2,286	4,851	4,572	2,286	220045-2
1-481552-6							
1-481552-8							
2-481552-3							
2-481552-4	2,799	2,692	1,346	2,921	2,692	1,346	220020-4
2-481552-5	4,242	3,810	2,032	4,367	3,810	2,032	483127-1
3-481552-1	2,845	2,692	1,346	2,972	2,692	1,346	220015(E)
4-481552-2							
4-481552-3							
8-481552-3	3,251	3,946	1,473	3,404	3,946	1,473	69307-1
483468-4	1,333	3,048	1,524	1,511	3,048	1,524	90222-5
483468-7	1,575	2,540	1,270	1,880	2,540	1,270	90274
2-483498-9	6,426	6,299	3,150	6,574	6,299	3,150	69477-1
5-483468-7	1,245	0,533	1,118	1,321	0,533	1,118	220061-1
5-483468-8	2,743	2,235	1,118	2,921	2,235	1,118	220066-1
5-483468-9	2,337	2,184	1,321	2,565	2,184	1,321	220066-1
6-483468-0	5,486	4,623	2,311	5,690	4,623	2,311	220066-1
6-483468-1	4,623	4,470	2,718	4,851	4,470	2,718	220066-1
7-483468-2							
9-483468-3	4,978	4,343	2,311	5,131	4,343	2,311	69205-1
9-483468-4	4,013	3,810	1,905	4,166	3,810	1,905	69246-2
949038-1	2,845	2,690	1,340	2,951	2,690	1,340	402660
949038-2							
949038-3							
949038-4							

UTILISATION

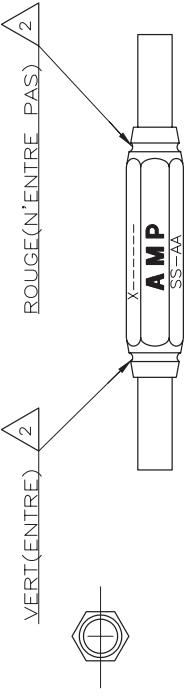
**OBSELETE, SUPERSEDED BY 525440-7**

**OBSELETE, SUPERSEDED BY 525440-4**

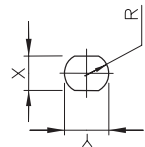
**OBSELETE, SUPERSEDED BY 525448-5**

**OBSELETE, SUPERSEDED BY 1-525443-9**

**OBSELETE, SUPERSEDED BY 2-525443-0**



MANCHE (ech.1)



EMBOUT

FILET DE PEINTURE DANS LA GORGE, DE LA COULEUR INDIQUEE

LOC	DIST	P	LTR	DESCRIPTION	DATE	DWN	APVD
F	10	A		ECR-08-004820	02/08	BM	LB
		A1		ECR-08-005853	03/08	BM	LB
		A2		ECR-08-006912	03/08	BM	LB
		A3		ECR-08-029387	11/08	BM	LB

DWN	13-NOV-95	C.KNOEPFLE	AMP DE FRANCE
CHK	04-APR-00	C.KNOEPFLE	95301 PONTOISE
APVD	04-APR-00	P.RANSON	
PRODUCT SPEC			
APPLICATION SPEC			
WEIGHT			
DIMENSIONS:		mm	
TOLERANCES UNLESS OTHERWISE SPECIFIED:		0 PLC ± 1 PLC ± 2 PLC ± 3 PLC ± 4 PLC ± ANGLES ± FINISH ±	
MATERIAL		-	
CUSTOMER DRAWING/PLAN		CAGE CODE	DRAWING NO
		A3 00779	C-949038
UNIQUEMENT POUR REFERENCE		SCALE	SHEET
		1:1	1
REV		OF	A3