

Excellent Integrated System Limited

Stocking Distributor

Click to view price, real time Inventory, Delivery & Lifecycle Information:

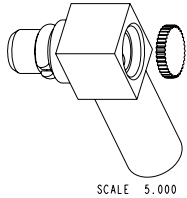
[Amphenol RF](#)
[908-NM43200](#)

For any questions, you can email us directly:

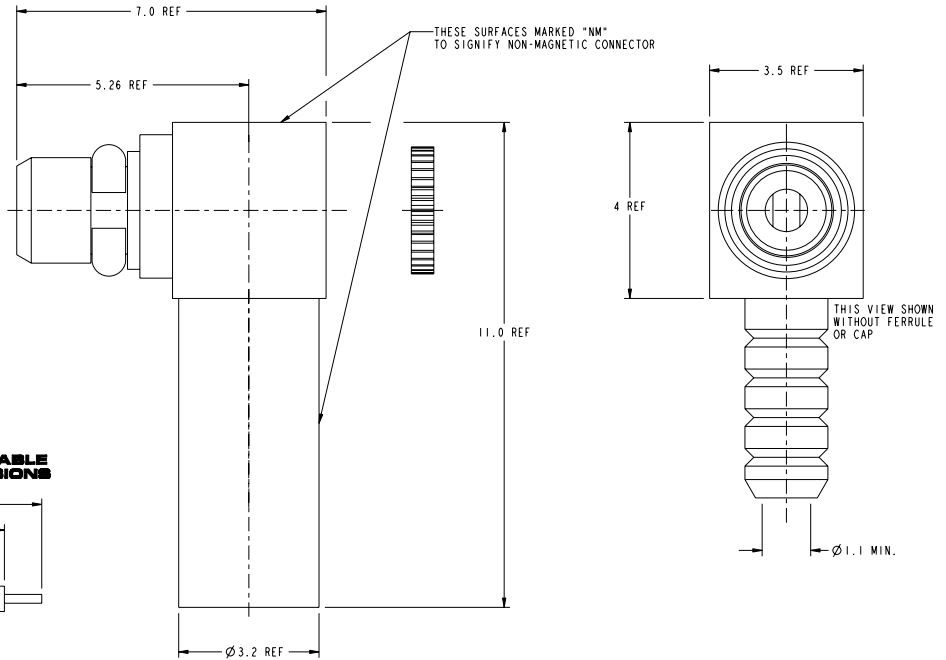
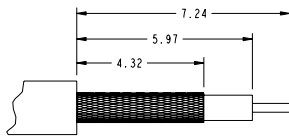
sales@integrated-circuit.com

NOTES:

1. MATERIAL AND FINISH:
BODIES: BeCu, WHITE BRONZE PLATING
CONTACT: BeCu, GOLD PLATING OVER WHITE BRONZE
RETAINING RING: BeCu, GOLD PLATING OVER WHITE BRONZE
CAP: BeCu, BeCu, WHITE BRONZE PLATING
FERRULE: SEAMLESS COPPER TUBING, WHITE BRONZE PLATING
INSULATOR: PTFE
2. ELECTRICAL:
A. IMPEDANCE: 50 OHM
B. FREQUENCY RANGE: DC - 6 GHz
C. DIELECTRIC WITHSTANDING VOLTAGE: 500 VRMS, MIN.
3. MECHANICAL:
A. DURABILITY: 500 CYCLES, MIN.
B. TEMPERATURE RANGE: -65° C TO 165° C
C. CRIMP WITH .105 INCH HEX
4. PACKAGING:
A. QUANTITY: BULK PACK 100
B. MARKING: BAG TO BE MARKED
"AMPHENOL 908-NM43200 100 PIECES, AND DATE CODE"
AND "NON-MAGNETIC CONNECTORS"



RECOMMENDED CABLE STRIPPING DIMENSIONS



METRIC DRAWING

CUSTOMER OUTLINE DRAWING

ALL OTHER SHEETS ARE FOR INTERNAL USE ONLY

<p>UNLESS OTHERWISE SPECIFIED, DIMENSIONS ARE METRIC AND TOLERANCES ARE: 1. PLACE DECIMAL ± 0.3MM (.012") 2. PLACE DECIMAL ± .10 MM (.004") ANGLES ± 1°</p> <p>NOTICE - These drawings, specifications, or other data (1) are, and remain the property of Amphenol Corp., (2) must be returned upon request; and (3) are confidential and not to be disclosed to any person other than those to whom they are given by Amphenol Corp. The furnishing of these drawings, specifications, or other data by Amphenol Corp., or to any other person to anyone for any purpose is not to be regarded by implication or otherwise in any manner licensing, granting rights to permitting such holder, or any other person to manufacture, use or sell any product, process or design, patented or otherwise, that may in any way be related to or disclosed by said drawings, specifications, or other data.</p>	<p>MATERIAL -</p> <p>REFERENCE EAR # 1952 AND CONFIGURATION LEVEL: Released</p> <p>FINISH</p>	<p>DRAWN K. CAPOZZI DATE 18-Jul-06</p> <p>ENGINEER K. CAPOZZI DATE 18-Jul-06</p> <p>APPROVED B. C. GLEISSNER DATE 8/8/06</p> <p>CAD FILE Root Folder/MMCX/908-NM43200</p>	<p>TITLE ASSEMBLY MMCX RG-178 R/A PLUG NON MAGNETIC</p> <p>SCALE: 12.0:1.0 SHEET 2 OF 2</p> <p>DWG SIZE B CODE 1D 74868 REV A</p>	<p>Amphenol RF Danbury CT USA, Tainan, Taiwan, Shenzhen, China www.amphenolrf.com</p> <p>DRAWING NO.</p> <p>ITEM NO.</p> <p>PART NO. 908-NM43200</p>