

Excellent Integrated System Limited

Stocking Distributor

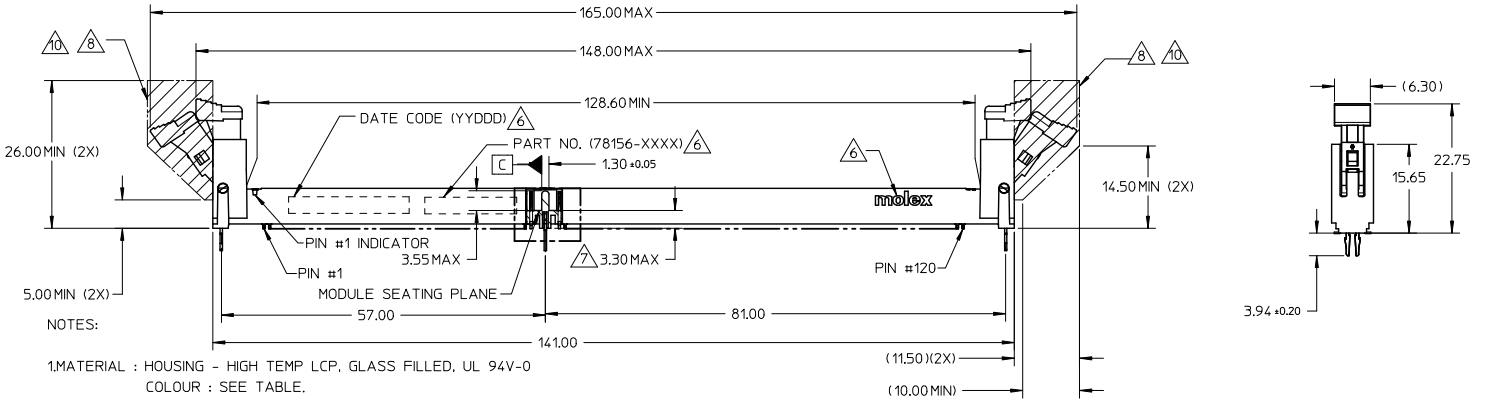
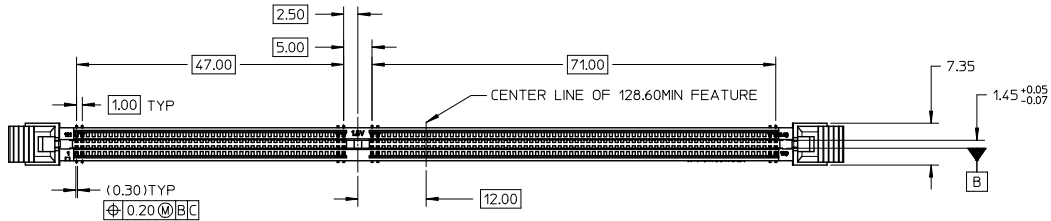
Click to view price, real time Inventory, Delivery & Lifecycle Information:

[Molex Connector Corporation](#)
[0781560001](#)

For any questions, you can email us directly:

sales@integrated-circuit.com

10 9 8 7 6 5 4 3 2 1



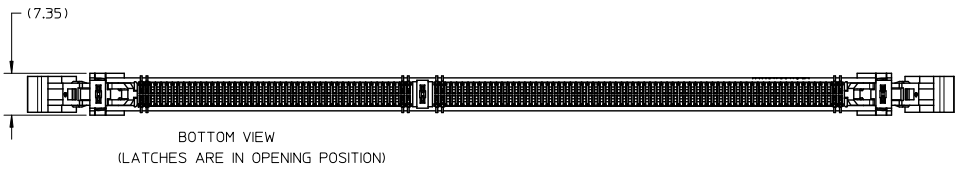
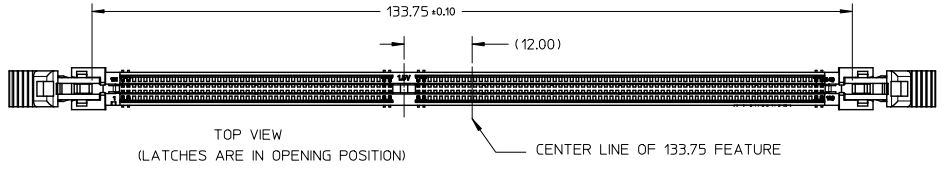
- NOTES:
1. MATERIAL : HOUSING - HIGH TEMP LCP, GLASS FILLED, UL 94V-0
COLOUR : SEE TABLE.
LATCH - HIGH TEMP NYLON, GLASS FILLED, UL 94V-0
COLOUR : SEE TABLE.
TERMINAL : COPPER ALLOY.
 2. FINISHES - SEE TABLE ON SHEET 2.
 3. PRODUCT SPECIFICATION : SEE TABLE.
 4. PRODUCT SHALL BE PACKED IN TRAY - SEE SHEET 5.
 5. CARD SLOT ACCEPTS 1.27±0.10MM MODULE THICKNESS (MEASURED FROM P.C. PADS).

- △6 MOLEX LOGO, DATE & PART NO. INDICATED ON HOUSING.
- △7 MODULE SEATING PLANE FROM TOP OF PCB.
- △8 KEEP OUT ZONE RESERVED FOR LATCH.
- △9 KEEP OUT AREA IS THE AREA WHERE THE CONNECTOR (INCLUDED LATCHES IN OPENING POSITION POSITION) IS MOUNTED ON THE PCB.
- △10 KEEP OUT ZONE AS PER JEDEC SO-007.
- △11 FORKLICK DETAIL VIEW.

REVISED EC. NO. S2009-0916 DRAWN/CMTO CHKD:GOTAN APPR: SHLENI 2009/06/26 2009/06/26 2009/06/26	QUALITY SYMBOLS ▽=0 ▽=0	GENERAL TOLERANCES (UNLESS SPECIFIED)		DIMENSION STYLE MM ONLY		SCALE NTS	DESIGN UNITS METRIC	THIRD ANGLE PROJECTION	
		4 PLACES ± --- ± ---	3 PLACES ± --- ± ---	2 PLACES ± 0.2 ± ---	1 PLACE ± --- ± ---	ANGULAR ± 1 °	DRAWN BY DWLEE01	DATE 2007/05/07	TITLE DDR3 DIMM, 1.00MM PITCH 240 CKTS, VERTICAL SMT
DRAFT WHERE APPLICABLE MUST REMAIN WITHIN DIMENSIONS		SEE TABLE		MATERIAL NO. SIZE A3		DOCUMENT NO. SD-78156-001		MATERIAL NO. MOLEX INCORPORATED	
A1		REV		THIS DRAWING CONTAINS INFORMATION THAT IS PROPRIETARY TO MOLEX INCORPORATED AND SHOULD NOT BE USED WITHOUT WRITTEN PERMISSION		SHEET NO. 1 OF 6			

9 8 7 6 5 4 3 2 1

10 9 8 7 6 5 4 3 2 1

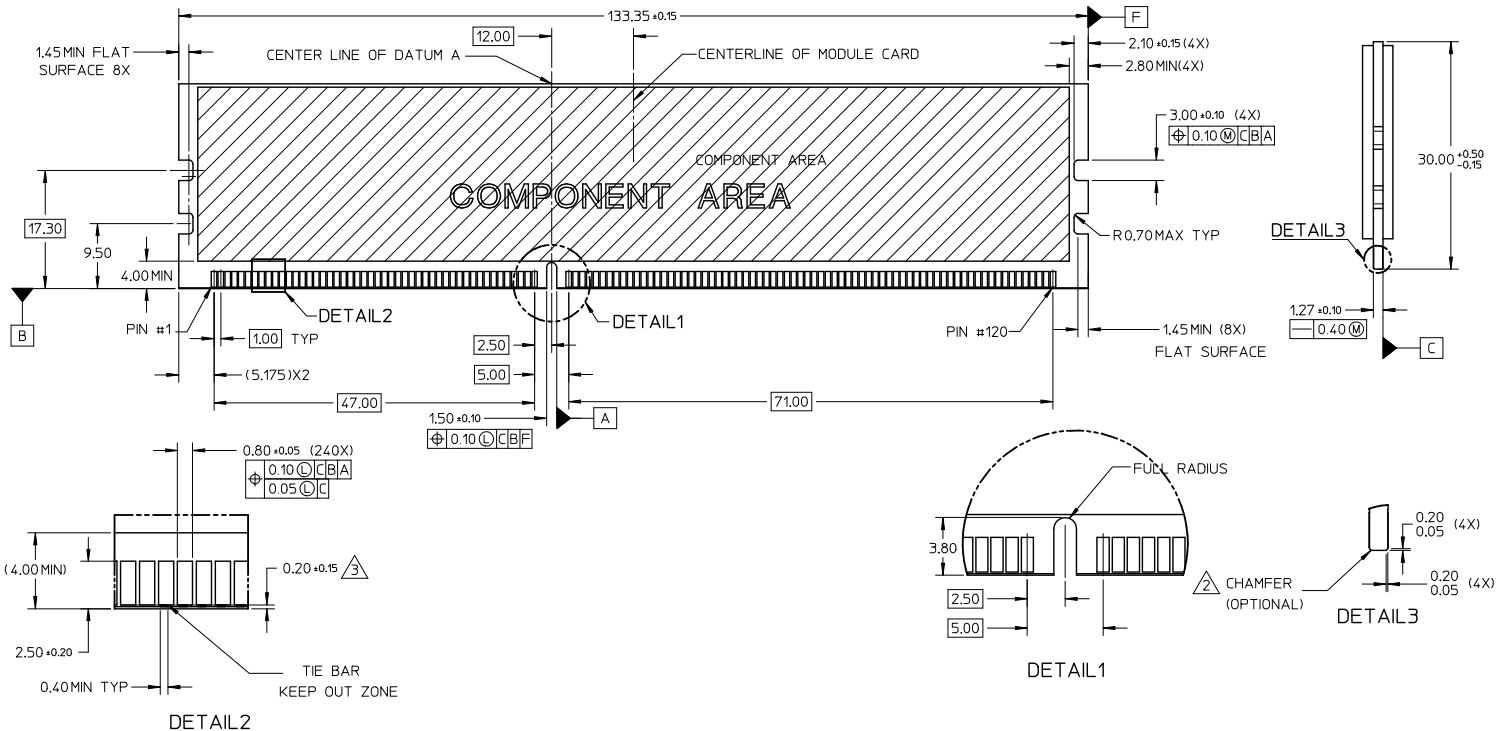


REVISED EC. NO.: S2009-0916 DRAWN/DATE: DWLEEE01 2009/06/26 CHECKED/DATE: YTYANG01 2009/06/26 APPR: SHLENI 2009/06/26 REV: A1	QUALITY SYMBOLS ▽=0 ▽=0	GENERAL TOLERANCES (UNLESS SPECIFIED) <table border="1"> <thead> <tr> <th></th> <th>mm</th> <th>INCH</th> </tr> </thead> <tbody> <tr> <td>4 PLACES</td> <td>± ---</td> <td>± ---</td> </tr> <tr> <td>3 PLACES</td> <td>± ---</td> <td>± ---</td> </tr> <tr> <td>2 PLACES</td> <td>± 0.2</td> <td>± ---</td> </tr> <tr> <td>1 PLACE</td> <td>± ---</td> <td>± ---</td> </tr> <tr> <td colspan="3">ANGULAR ± 1 °</td> </tr> </tbody> </table>		mm	INCH	4 PLACES	± ---	± ---	3 PLACES	± ---	± ---	2 PLACES	± 0.2	± ---	1 PLACE	± ---	± ---	ANGULAR ± 1 °			DIMENSION STYLE MM ONLY DRAWN BY: DWLEEE01 DATE: 2007/05/07 CHECKED BY: YTYANG01 DATE: 2007/07/06 APPROVED BY: SHLENI DATE: 2007/07/06 MATERIAL NO.: SEE TABLE SIZE: A3	SCALE: NTS DESIGN UNITS: METRIC THIRD ANGLE PROJECTION TITLE: DDR3 DIMM, 1.00MM PITCH 240 CKTS, VERTICAL SMT MOLEX INCORPORATED DOCUMENT NO.: SD-78156-001 SHEET NO.: 2 OF 6
		mm	INCH																			
	4 PLACES	± ---	± ---																			
	3 PLACES	± ---	± ---																			
2 PLACES	± 0.2	± ---																				
1 PLACE	± ---	± ---																				
ANGULAR ± 1 °																						
DRAFT WHERE APPLICABLE MUST REMAIN WITHIN DIMENSIONS		THIS DRAWING CONTAINS INFORMATION THAT IS PROPRIETARY TO MOLEX INCORPORATED AND SHOULD NOT BE USED WITHOUT WRITTEN PERMISSION																				

9 8 7 6 5 4 3 2 1

10 9 8 7 6 5 4 3 2 1

MODULE CARD
DDR3 DUAL IN-LINE MEMORY MODULE FAMILY 1.00MM CONTACT CENTERS
(JEDEC MO-269, ISSUE A, 12/05)



NOTES:
1. RECOMMENDED PLATING FOR CONTACT PADS:
PREFERRED: 0.76 MICROMETERS GOLD PLATING MIN OVER 2.00 MICROMETERS NICKEL.
ALTERNATIVE: 0.05-0.75 MICROMETERS GOLD PLATING OVER 2.00 MICROMETERS NICKEL MUST USE AN ELECTRONIC CONTACT GRADE CORROSIVE BARRIER LUBRICANT.
CHAMFER IS OPTIONAL AND IS NOT TO HIT THE GOLD PADS.
LEADING EDGE OF GOLD PADS SPECIFIED BY KEEPOUT ZONE SHALL BE FREE OF BURRS AND EXTERNAL TIE BARS.

REVISED EC. NO. S2009-0916 DRAWN/CMO CHKD:GOTAN APPR: SHLENI 2009/06/26 2009/06/26 2009/06/26	QUALITY SYMBOLS	GENERAL TOLERANCES (UNLESS SPECIFIED)	DIMENSION STYLE	SCALE	DESIGN UNITS	THIRD ANGLE PROJECTION
	▽=0	mm INCH	MM ONLY	NTS	METRIC	
	▽=0	4 PLACES ± --- ± ---	DRAWN BY DATE			
		3 PLACES ± --- ± ---	DWLEE01 2007/05/07	TITLE		
	2 PLACES ± 0.2 ± ---	CHECKED BY DATE	DDR3 DIMM, 1.00MM PITCH			
	1 PLACE ± --- ± ---	YTYANG01 2007/07/06	240 CKTS, VERTICAL SMT			
	ANGULAR ± 1 °	APPROVED BY DATE	MOLEX INCORPORATED			
		SHLENI 2007/07/06	MATERIAL NO.	DOCUMENT NO.	SHEET NO.	
			SEE TABLE	SD-78156-001	3 OF 6	
			THIS DRAWING CONTAINS INFORMATION THAT IS PROPRIETARY TO MOLEX INCORPORATED AND SHOULD NOT BE USED WITHOUT WRITTEN PERMISSION			

9 8 7 6 5 4 3 2 1

10 9 8 7 6 5 4 3 2 1

F

E

D

C

B

A

F

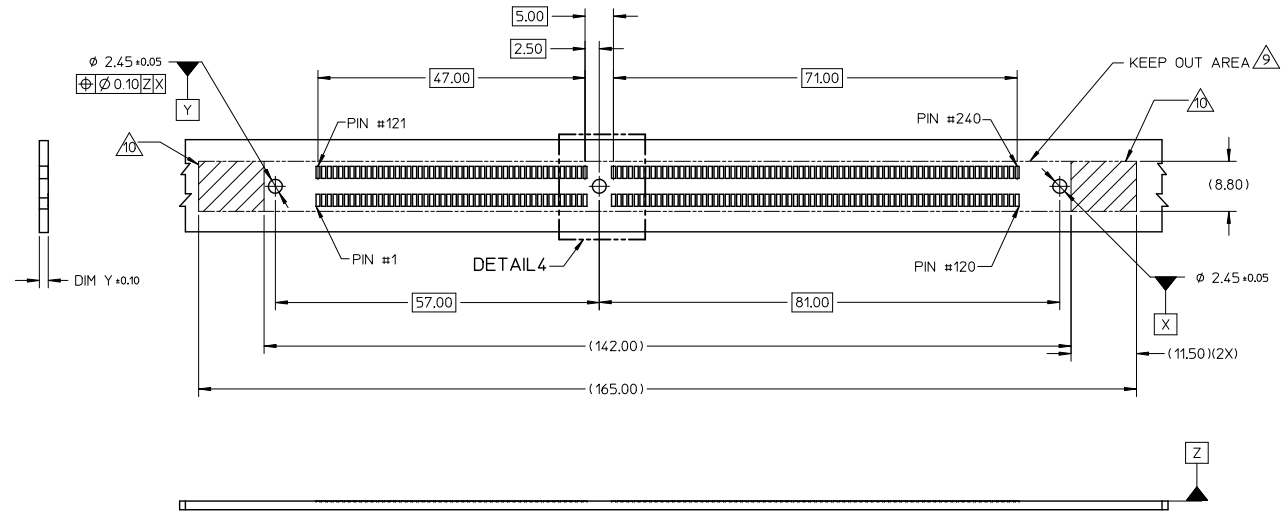
E

D

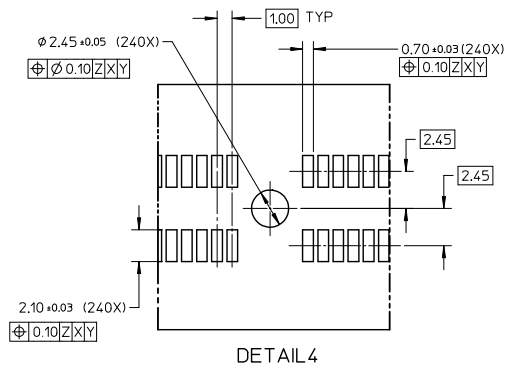
C

B

A



RECOMMENDED PCB THICKNESS 1.57MM TO 3.18MM
RECOMMENDED STENCIL THICKNESS = 150 MICROMETERS

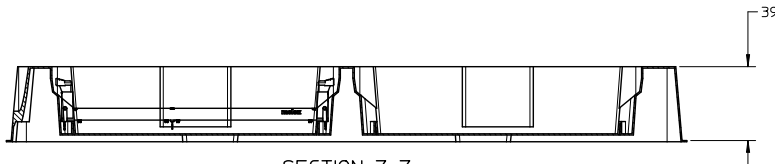
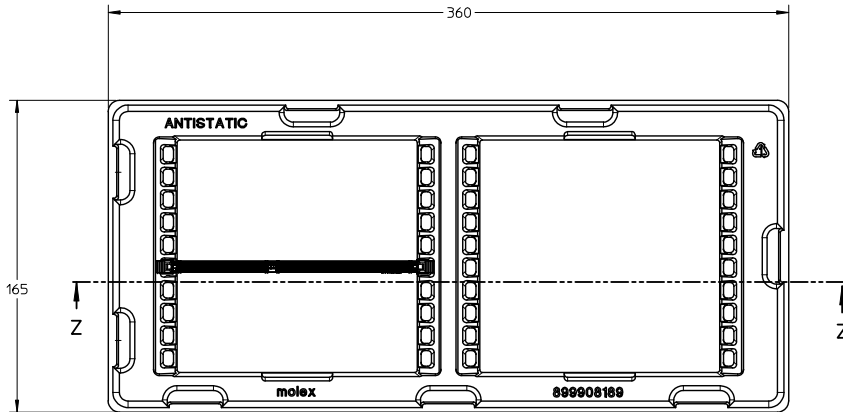


REVISED EC. NO. S2009-0916 DRAWN/DATE 2009/06/26 CHKD/ECTAN 2009/06/26 APPR/SHLENI 2009/06/26	QUALITY SYMBOLS ▽=0 ▽=0	GENERAL TOLERANCES (UNLESS SPECIFIED)		DIMENSION STYLE MM ONLY		SCALE NTS	DESIGN UNITS METRIC	THIRD ANGLE PROJECTION	
		4 PLACES ± --- ± ---	3 PLACES ± --- ± ---	2 PLACES ± 0.2 ± ---	1 PLACE ± --- ± ---	ANGULAR ± 1 °	DRAWN BY DWLEE01	DATE 2007/05/07	TITLE DDR3 DIMM, 1.00MM PITCH 240 CKTS, VERTICAL SMT
A1	DESCRIPTION	DRAFT WHERE APPLICABLE MUST REMAIN WITHIN DIMENSIONS		SEE TABLE		MATERIAL NO.	DOCUMENT NO.	MOLEX INCORPORATED SD-78156-001	
				SIZE A3		THIS DRAWING CONTAINS INFORMATION THAT IS PROPRIETARY TO MOLEX INCORPORATED AND SHOULD NOT BE USED WITHOUT WRITTEN PERMISSION			

9 8 7 6 5 4 3 2 1

10 9 8 7 6 5 4 3 2 1

VIEW OF PACKAGING TRAY



SECTION Z-Z

NOTE:
1. CAVITY QTY , 20PCS

REVISED IEC NO: SZ009-0916 DRW:CMTEO CHKD:CGTAN APPR:SHLENI A1	2009/06/26 2009/06/26 2009/06/26	QUALITY SYMBOLS ▽=0 ▽=0	GENERAL TOLERANCES (UNLESS SPECIFIED)		DIMENSION STYLE MM ONLY		SCALE	DESIGN UNITS	THIRD ANGLE PROJECTION		
				mm	INCH	DRAWN BY	DATE	NTS		METRIC	
			4 PLACES	±---	±---	DWLEE01	2007/05/07				TITLE
			3 PLACES	±---	±---	CHECKED BY	DATE				DDR3 DIMM, 100MM PITCH 240 CKTS, VERTICAL SMT
			2 PLACES	±0.2	±---	YTYANG01	2007/07/06				
			1 PLACE	±---	±---	APPROVED BY	DATE				
			ANGULAR ± 1 °			SHLENI	2007/07/06				
DRAFT WHERE APPLICABLE MUST REMAIN WITHIN DIMENSIONS			MATERIAL NO.		SEE TABLE		DOCUMENT NO.		SHEET NO.		
							SD-78156-001		5 OF 6		
THIS DRAWING CONTAINS INFORMATION THAT IS PROPRIETARY TO MOLEX INCORPORATED AND SHOULD NOT BE USED WITHOUT WRITTEN PERMISSION											

9 8 7 6 5 4 3 2 1

10 9 8 7 6 5 4 3 2 1

PART NO.	VOLTAGE KEY POS.	DIM X	PCB THICKNESS DIM Y (mm)	PLATING OPTION	HOUSING COLOUR	LATCH COLOUR	PRODUCT SPEC.
78156-0001	CENTER (1.5)	3.94	1.57 - 3.18	0.76 MICROMETER/ 30 MICROINCH MIN. GOLD ON CONTACT 2.54 MICROMETER/ 100 MICROINCH MIN. PURE TIN (MATTE) ON SOLDERTAILS 1.27 MICROMETER/ 50 MICROINCH MIN. NICKEL UNDERPLATE	BLACK	BLACK	PS-78156-001
78156-0003		3.94	1.57 - 3.18		NATURAL (IVORY)	NATURAL (IVORY)	
78156-0005		3.94	1.57 - 3.18		BLACK	NATURAL (IVORY)	
78156-0102		3.94	1.57 - 3.18	0.38 MICROMETER/ 15 MICROINCH MIN. GOLD ON CONTACT 2.54 MICROMETER/ 100 MICROINCH MIN. PURE TIN (MATTE) ON SOLDERTAILS 1.27 MICROMETER/ 50 MICROINCH MIN. NICKEL UNDERPLATE	NATURAL (IVORY)	NATURAL (IVORY)	PS-78156-002

REVISED EC. NO.: S2009-0916 DRAWN/DATE: 2009/06/26 CHKD/DATE: 2009/06/26 APPR: SHLENI 2009/06/26	QUALITY SYMBOLS	GENERAL TOLERANCES (UNLESS SPECIFIED)	DIMENSION STYLE	SCALE	DESIGN UNITS	THIRD ANGLE PROJECTION															
	$\nabla=0$ $\nabla=0$	<table border="1"> <tr> <th></th> <th>mm</th> <th>INCH</th> </tr> <tr> <td>4 PLACES</td> <td>± ---</td> <td>± ---</td> </tr> <tr> <td>3 PLACES</td> <td>± ---</td> <td>± ---</td> </tr> <tr> <td>2 PLACES</td> <td>± 0.2</td> <td>± ---</td> </tr> <tr> <td>1 PLACE</td> <td>± ---</td> <td>± ---</td> </tr> </table>		mm	INCH	4 PLACES	± ---	± ---	3 PLACES	± ---	± ---	2 PLACES	± 0.2	± ---	1 PLACE	± ---	± ---	MM ONLY	NTS	METRIC	
		mm	INCH																		
	4 PLACES	± ---	± ---																		
3 PLACES	± ---	± ---																			
2 PLACES	± 0.2	± ---																			
1 PLACE	± ---	± ---																			
DRAFT WHERE APPLICABLE MUST REMAIN WITHIN DIMENSIONS	DRAWN BY: DWLEE01 CHECKED BY: YTYANG01 APPROVED BY: SHLENI DATE: 2007/05/07 DATE: 2007/07/06 DATE: 2007/07/06	TITLE: DDR3 DIMM, 1.00MM PITCH 240 CKTS, VERTICAL SMT		MOLEX INCORPORATED	SHEET NO. 6 OF 6																
A1	MATERIAL NO. SEE TABLE	DOCUMENT NO. SD-78156-001	THIS DRAWING CONTAINS INFORMATION THAT IS PROPRIETARY TO MOLEX INCORPORATED AND SHOULD NOT BE USED WITHOUT WRITTEN PERMISSION																		

9 8 7 6 5 4 3 2 1